



Inspiring Solidarity

ANNUAL REPORT 2021

Mukuru Promotion Centre

Empowerment Step By Step

Sponsored by the Sisters of Mercy

www.mercymukuru.co.ke

Table of Contents

Acknowledgements.....	3
Foreword	4
Registered Trustees Sisters of Mercy.....	5
Chairman’s Message	6
Highlights.....	7
Strategic	7
Financial.....	7
Infrastructure	8
Operational.....	8
Looking Ahead.....	8
Snapshot 2021	9
About Mukuru Promotion Centre	10
Scale and Affect.....	11
Mukuru Catchment Area.....	13
Five MPC Sites	14
Administration and Governance	15
Human Resources	16
MPC Staff Composition 2021	17
Education	18
Primary Schools	19
Primary School Enrolments	19
Pupil / Teacher Ratio 2021.....	19
Examination Performances 2021	19
KCPE Mean Score over a 5 year period	20
St Michael’s Secondary School	22
KCSE 2020 Performance by Gender	22
KCSE 2020 Results by Subject.....	23
Our Lady of Mercy Vocational Training Centre	25
NITA 2020 and KNEC / Internal Examination Results.....	26
Social and Health Services.....	28
Social Services	29
Summary of Client Interventions for 2021	30
Mary Immaculate Clinic	31
MPC Clinic Registrations Statistics for 2021	32
MPC Clinic Most Common Diseases	32
Clinic Laboratory Tests For 2021	33

Welfare Services	34
Songa Mbele na Masomo Children's Centre	35
Mary Immaculate Rehabilitation Centre for Former Street Boys	36
Rehabilitation Centre Composition 2021	36
Sponsorship Program	38
Financial Summary Statement 2021	41
Statement of Comprehensive Income Year Ended 31 December 2021	41
Statement of Financial Position	41
Major Grants and Contributions Year Ended 31 December 2021	42
Capital Funds Contributions	43
Financial Analysis 2021	45

Acknowledgements

Editor: Sr Kathy Kettle RSM

Compiler: Dinah Mwendwa

Proof-readers: Sr Maureen Mohen RSM, Dinah Mwenda and Sr Patricia Moran RSM

Contributions and Photographs: Heads of Department and Winnie Ogutu

Front Cover: Pupils at St Catherine's Primary School

MPC is audited each year in accordance with International Standards on Auditing (ISA). The auditors are independent of the Organisation in accordance with the International Ethics Standards Board for Accountants' Code of Ethics for Professional Accountants (IESBA Code).

Kirenge & Associates Certified Public Accountants.

We have audited the financial statements of the Mukuru Promotion Centre as at 31st December 2021, in our opinion, the financial statements present fairly, in all material respects, the financial position of MPC at 31st December 2021 and of its financial performance and cash flows for the year then ended in accordance with International Financial Reporting Standards (IFRSs).

Foreword

In 2021, we continued with our mission to empower Mukuru slum dwellers, guided by the four main pillars of Education, Health, Social Rehabilitation and Welfare Outreach, in our strategic plan. The CoVid19 pandemic and lockdown had a devastating effect on the Mukuru community resulting loss of employment. This impacted the ability of parents to contribute to educational, health and vocational skills training services. Without your great support we could not have achieved our success in these areas. Thanks to all those who sponsored students and health services for the marginalized.

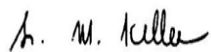
A wonderful highlight of the year was the completion of the new Songa Mbele na Masomo facility and its occupation by the children living with disabilities with the official opening scheduled for 2022. A second major highlight was welcoming on board the Fidel Goetz Foundation, who plan to empower African female leaders in partnership with Mukuru Promotion Centre and other parties in various African countries.

We planted hundreds of trees, improved some of our sites and plan to continue with improvement and development of our sites. In 2021 our focus was on Songa Mbele na Masomo Childrens Centre while our focusing going forward is on Mary Immaculate Rehabilitation Centre and Our Lady of Mercy Vocational Training Centre, while we still give attention to our other projects.

We recognize the need to improve and strengthen our advocacy and training of the parents and community in understanding and accessing their human rights and their entitlement to Government services.

May God bless each of you. May God reward you abundantly for your support and together may we make a difference for the better in the lives of Mukuru residents.

Yours sincerely,



Sr Mary Killeen RSM
Director

January 2022

Registered Trustees Sisters of Mercy

Once again, we thank God for the ministry of Mukuru Promotion Centre and the impact it continues to have in the lives of the people of Mukuru. The ministry of MPC is tangible and real. Above all, we are grateful to God for the opening of the new facility at Songa Mbele na Masomo Children's Centre. This institution caters for the most marginalized in Mukuru, the children with multiple disabilities.

Mukuru Promotion Centre remains a vibrant project whose main focus remains the most marginalized of Mukuru. All the projects under MPC are vital for the life of the people in the villages of the Mukuru catchment area, just a few kilometres from Nairobi city. I am happy that MPC has continued to offer service and in so doing, to keep the charism of Catherine McAuley alive.

On behalf of all the Sisters of Mercy, I would like to thank the donors and partners of MPC who continuously support and contribute so much to the survival of this project. Without you, the ministry of MPC would not be achieved. I would also like to congratulate the Director, Sr Mary Killeen for her hard work and commitment that is ever new and visible throughout the year. I commend her dedication to keeping the fires burning in MPC. Special thanks to all the staff who are so dedicated and continuously support the ministries of MPC. I am forever grateful to the Board of Management of MPC, led by Dr Onsando Osiemo for their commitment and dedication and for providing the much needed expertise in the running of MPC.

God bless you all.



Sr. Mary Gitau IBVM

Pontifical Commissary, Sisters of Mercy Kenya Province

Chairman's Message

The CoVid19 Pandemic and its negative impact persisted into 2021. At MPC we strived on as best we could and with the help of the Sisters of Mercy, our partners, staff, and the Mukuru Community managed to achieve commendable results.

In 2021 we started work on our next Strategic Plan 2021-2026. This would guide us in strengthening our governance and management structures and also enhance our sustainability. Regarding the infrastructure, we completed the construction of the new multistorey facility at Songa Mbele na Masomo Children's Centre and the new Therapy Building which will provide greater accessibility to the Special Needs Youths from Mukuru slums.

In 2021 we partnered with 20 major NGOs, over 100 supporters and friends across 12 countries in 4 continents to discharge our programs and deliver on our strategic objectives.

God's Grace enabled us to run our programs under difficult circumstances and it was our partners, supporters and friends who made our achievements possible. Special gratitude and thanks to the Director, Sr Mary Killeen and her staff for their tireless commitment to the aims and objectives of MPC. We appreciate the Board of Management for its overall guidance of MPC in line with its vision and mission.

We pray that the almighty God will keep and guide MPC towards greater achievements in the coming year.



Dr Onsando Osiemo

Chairman, Board of Management

Highlights

Strategic

During 2021 the true meaning of ‘solidarity with the poor’ was evident in many ways. We experienced how our partners, supporters and friends despite their own economic difficulties, accomplished waves of support as they opened their hearts more generously to those we serve marked by the affliction of poverty, illiteracy, exclusion, indignity, malnourishment and injustices.

After the initial response to the emergency of the CoVid19 Pandemic the long term consequences were unmistakable and impacted at the most basic levels of need. The strong governance and management structures were a well-grounded feature at MPC ensuring it was able to maintain its strategic objectives within the pandemic context. Flexibility and relevance were applied to the sustainable programs to ensure that community members had increased options to gain training and employment; as the poverty compounded, the healthcare was modified to ensure that no one was excluded from basic treatment; the social outreach significantly increased as a result of the astonishingly high numbers of teenage mothers and people who simply did not have enough food to eat. A new and stronger focus for the environment generated more awareness opportunities for the community to understand the importance of securing a healthy environment to live in.

Impelling advocacy needs to occur in order to secure government support for the most marginalized in society. While there has been some financial support for parents with children living with disabilities and senior citizens there is much bureaucracy in obtaining the support. A more substantial intent is required to ensure the community has a greater understanding of their rights and entitlements in basic services from the Government.

Financial

Within the context of a global pandemic, in its second year, the financial status for MPC was heartening. In 2021 the Grants increased by 25.8% (10,388,216 khs) and the ‘Other Income’ and ‘Donations in-kind’ increased by 77.5% (11,337,559 khs) and 44.5% (3,521,388 khs) respectively. The general ‘Donations’ decreased marginally by 15.5% (2,599,200 khs). Understandably there was an increase in the Personnel Costs as learning institutions emerged from the frequent Government lockdowns. Once the learning institutions were re-opened all teaching and non-teaching personnel received full salaries. The increases in the Finance Costs resulted in the Government increasing bank charges (35.5%). The Operating Costs were moderate with a 17.5% increase as the Government returned to the pre-pandemic VAT rate of 16% on all goods and services.

Infrastructure

The three capital works programs were the new multistorey facility at Songa Mbele na Masomo, the Therapy Block for youths with disabilities at the Vocational Training Centre and the disability friendly toilets at the primary schools. All projects were fully funded from international donors.

Operational

MPC incorporates 9 departments across 4 disciplinary fields of education, healthcare, social services and welfare that comprise 152 staff members. The 4 Primary Schools continued to have the highest operational figure as the pupil teacher ratio is not compliant with the Teachers Service Commission and MPC subsidizes the schools to reduce the teacher/pupil ratio. The single biggest regular operational cost for MPC is the schools feeding program and food packages for the destitute families as the unemployment rate in the slums reached an all-time high in 2021 while the private sector continued to shrink with rising interest rates. The forecasts have the Kenyan economy worsening with interest and unemployment rates to rise even higher in 2022.

The other major recurrent cost for the learning institutions is the feeding program that averages 600,000 khs per month (€ 4,800/ \$US4,900). For a large number of the pupils, lunch would be their only meal. St Michael's Secondary School is a coeducational private secondary day school and very well resourced, however, only 40% of students are full fee paying. Efforts to increase the number of sponsored students has been gradually increasing over the last 3 years.

Hundreds of MPC supporters enabled the services to not only continue in 2021 but found new ways to be in solidarity with the poor. Opening the doors to services for the marginalized in Nairobi's Mukuru slums is the motivation that inspired many people in 2021 to support the mission of MPC. With the non-government organisations, associates and friends from around the world, tens of thousands of people found an advocate at the Centre.

Looking Ahead

Undoubtedly the CoVid19 Pandemic created unprecedented chaos over the last two years on the daily living conditions, MPC remained committed in its solidarity with the marginalized and hopes to continue being a beacon for the Mukuru community that shines a light on their concerns and struggles, to ensure that opportunities of empowerment, step by step, will be accessible to them.

“Promote solidarity initiatives that gives concrete hope to the most disadvantaged”

[Pope Francis I – November 2019]

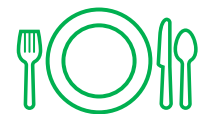
Snapshot 2021

MPC partnered with 20 major NGOs along with over 100 supporters and friends across 12 countries incorporating 4 continents.



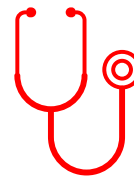
MPC directly assisted over 22,000 children, youths and adults.

MPC provided 1,210,000 meals to the children, youth and parents.



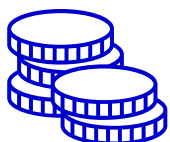
MPC planted 600 new seedlings along the Ngong River and instigated environmental projects.

MPC attended to over 20,000 patients and 7,700 laboratory tests.



conducted over

MPC aided over 6,000 children to attend primary and secondary schools.



MPC received US\$596,340 (€580,000) in funds and grants and US\$99,227 (€99,000) in donations in kind.

(1US dollar=Ksh 113). – check the exchange rate used in 2021 for all currencies.

About Mukuru Promotion Centre

Mukuru slum is home to over 700,000 people comprising 20 villages. Most of these people leave their rural homes to come to urban areas because of poverty and with the hope of finding work. Others come from famine areas and internal clashes in order to survive. Some people secure small jobs to start off, however, the majority of people are unskilled and uneducated. They are forced to seek shelter which is within their means in the underdeveloped areas of the town. The people live in congested single room shacks that are mostly made of corrugated iron sheets. The most vulnerable result to collecting cardboard, carton or plastic materials to provide shelter for their families. Many of the 10 x 10 foot houses have no sanitation or running water. There is no waste collection and all the waste goes directly into the nearby Ngong River thus exacerbating communicable diseases.

Current statistics show that over 60% of Nairobi's population live in slum conditions. Children have no playgrounds and adults have no recreational outlets except for bars, video shops and pool tables. Many youths turn to local brews, drugs and crime. The reality of this situation impelled the community to approach the Sisters of Mercy for assistance. In 1985 the Sisters of Mercy worked collaboratively with the community to start the first of six schools. The first primary school commenced in Mukuru Kayaaba in the heart of Mukuru slum. Due to the dire need of primary education by the growing population in the slum catchment area, St Elizabeth's Primary School Lunga Lunga started in 1991; then St Catherine Primary, South B (opposite Mater Hospital) in 1992 and eventually two more schools in Kwa Reuben in 1986/1991 and Kwa Njenga in 1991. St Bakhita commenced in 1996 and was the last primary school to be built. The Kwa Reuben Centre was handed over to Christian Brothers in 2000, while the Kwa Njenga Centre was handed over to the Marianist Brothers in 1998.

As the demands increased it was necessary to formalize the Centre and Mukuru Promotion Centre (MPC) was established as a faith based charitable organization in Nairobi, Kenya with its Head Office located along New Likoni Road, Industrial Area. After thirty five years MPC has programs operating in five areas of the Mukuru slums. The Centre runs 4 primary schools with approximately 5,800 pupils, a community secondary school with 470 students, a centre for children living with disabilities, a rehabilitation centre for street boys; a medical and nutrition clinic with a HIV/Aids VCT Centre. Other programs include a vocational training centre for about 250 students and a sponsorship program for the neediest children covering all levels of education.

The objectives of MPC are to empower the marginalized residents of Mukuru Community with basic education, skills to enable them to reach their potential and become self-reliant. The faith based charitable organization (FBO) centre depends on philanthropic goals and social welfare such as charitable, educational, religious and other activities that serve the public interest for the common good.

Scale and Affect

January 2021 saw over 300 private schools in Kenya close and some 56,000 pupils had to find new schools for the beginning of a new academic year in January. The Kenyan economy plunged into a tax revenue deficit of up to Ksh 42 billion (US\$420M). The population living below the poverty line grew 15% or 7.5million people and most of the residents of Mukuru lived in abject poverty while many went without food for days (*source: <https://data.worldbank.org/>*).

Kenya experienced great difficulty procuring vaccines for just 25% of its 50 million people. With the rapid increase in the number of cases in India, it became increasingly difficult for Kenya to secure any supplies. The rate of infections dramatically increased. By the end of 2021, a total of 4,171,581 vaccines were administered across the country and of these 3,126,284 were partially vaccinated while those fully vaccinated numbered only 1,045,918 (*source: <https://www.health.go.ke>*). MPC continued to dispense immunity booster parcels and nutritional support to over 2,400 families including over 340 malnourished babies. Despite the lockdowns, restrictions, economic instability, isolation, fears and anxieties which were a product of CoVid19, MPC walked each day with the community and remained resolute and focused on social outreach and human dignity.

Lessons from 2020 provided the lens for the strategic direction over the next 5 years. The areas that emerged from the various inputs were: Institutional capacity, Education, Sponsorship and Skills Development, Healthcare and Social Services Coordination, and Environmental Conservation and Coordination. The economic situation in developed countries does have an impact on MPC as it receives 81% of its funds from overseas. Poor economic forecasts globally do have an impact on MPC operations. After 35 years in operation MPC's invaluable knowledge has placed it in a good position. Although there are hundreds of thousands of people living in Mukuru slums, MPC knows its limitations and strengths and focuses on what it can do well for the sake of the community and collaborates with others when it does not have the resources. The essence of MPC's charism, philosophy and ethics drives its Mission, Vision and Core Values that inspire solidarity with the poor.

Mission:

Aspire, in conjunction with the Mukuru Community, to establish and operate holistic and sustainable education, health, and empowerment programs which will address the basic needs of the most vulnerable groups in the community.

Vision:

To empower Mukuru Community to elevate their human dignity towards self-sustainable development.

Core Values:

MPC is committed to:

- Integrity:*** *promoting transparency and accountability in our work. MPC is impartial, honest and objective in all MPC activities and decision-making.*
- Commitment:*** *consultation, collaboration and cooperation in discharging its mandate and service delivery.*
- Upholding Human Dignity:*** *upholding human dignity, respecting, honouring, praising, being courteous and regarding one another, edifying each other's beauty, worth and importance.*
- Professionalism:*** *placing a high value on doing a good job as well as respecting others in all our undertakings.*

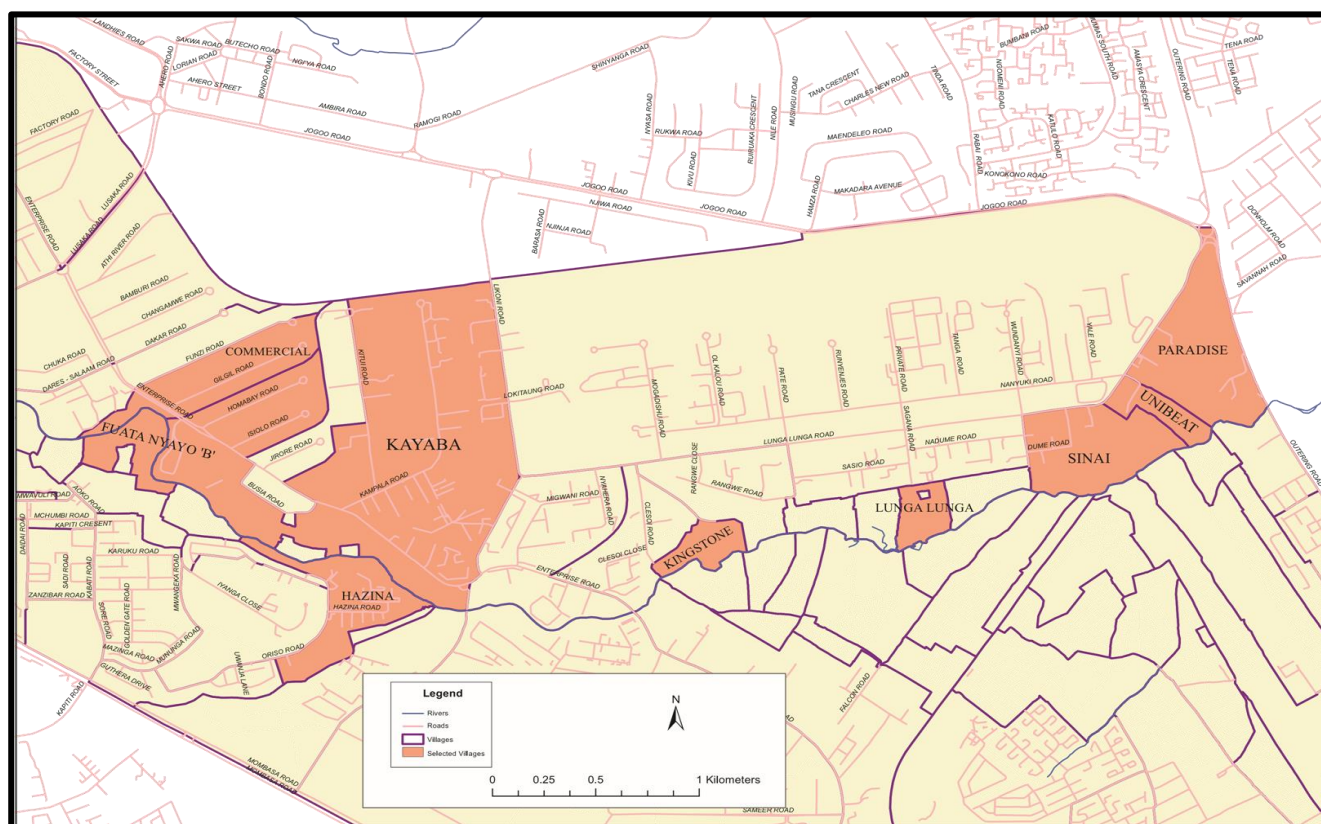
The MPC Core Values are imbued through its principles of:

- Preferential concern for the neediest in the society, expressed through the Mercy charism.
- Promotion of the dignity and uniqueness of the human person.
- Encouraging honesty, openness and respect for all.
- Fostering a knowledge and love of an all-caring Creator.

Mukuru Catchment Area

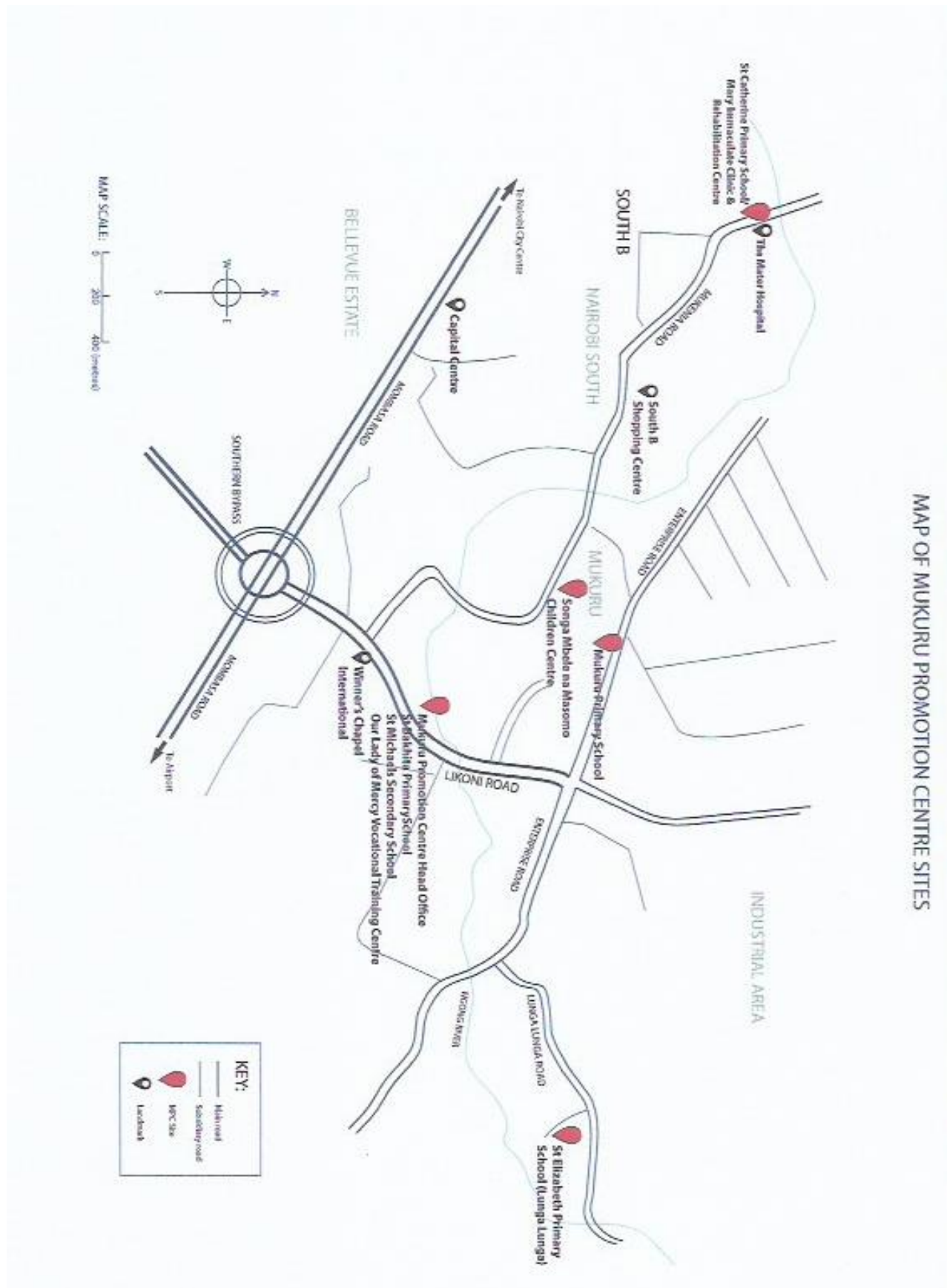
Estimated Population of MPC Zone of Influence						
Location - County and Sub-Country	Area Wards	Total	Male	Female	HH	Density PP Sq Km
Nairobi City County		4,397,073	2,192,452	2,202,376	1,494,676	6,247
Starehe	Landmawe	36,907	22,115	14,791	36,479	5,993
	South B	102,441	54,063	48,374	36,479	8,452
	Mukuru Nyayo	65,534	31,948	33,583	23,210	10,992
	Hazina	31,318	14,943	16,372	10,848	7,155
	Kamukunji	10,954	6,842	4,110	2,911	10,043
	Pangani	36,038	16,623	19,415	9,393	38,009
Makadara	Makadara	116,473	57,164	59,302	40,139	20,389
	Hamza	18,272	8,816	9,453	6,633	18,775
	Harambee	23,280	10,360	12,920	6,779	13,423
	Jericho/Lumumba	6,158	2,956	3,202	1,976	17,089
	Viwandani	43,070	24,153	18,915	18,472	8,554
Embakasi	Embakasi	988,808	492,476	496,270	346,462	11,460
	Mukuru Kwa Njenga	242,941	198,813	114,102	97,890	87,538
	Imara Daima	118,528	63,356	55,167	46,314	30,274
MPC Area of Influence		1,840,722	1,004,628	905,976	683,985	

Source: Extract of KNBS (2019 Kenya Population and Housing Census (Vol II)

Villages within the Mukuru Kayaaba catchment area

Source: KBS (2017) Mukuru Kayaaba Catchment Area

Five MPC Sites



Mukuru Promotion Centre 2021 Organisational Chart

Registered Trustees Sisters of Mercy

Board of Management

Director

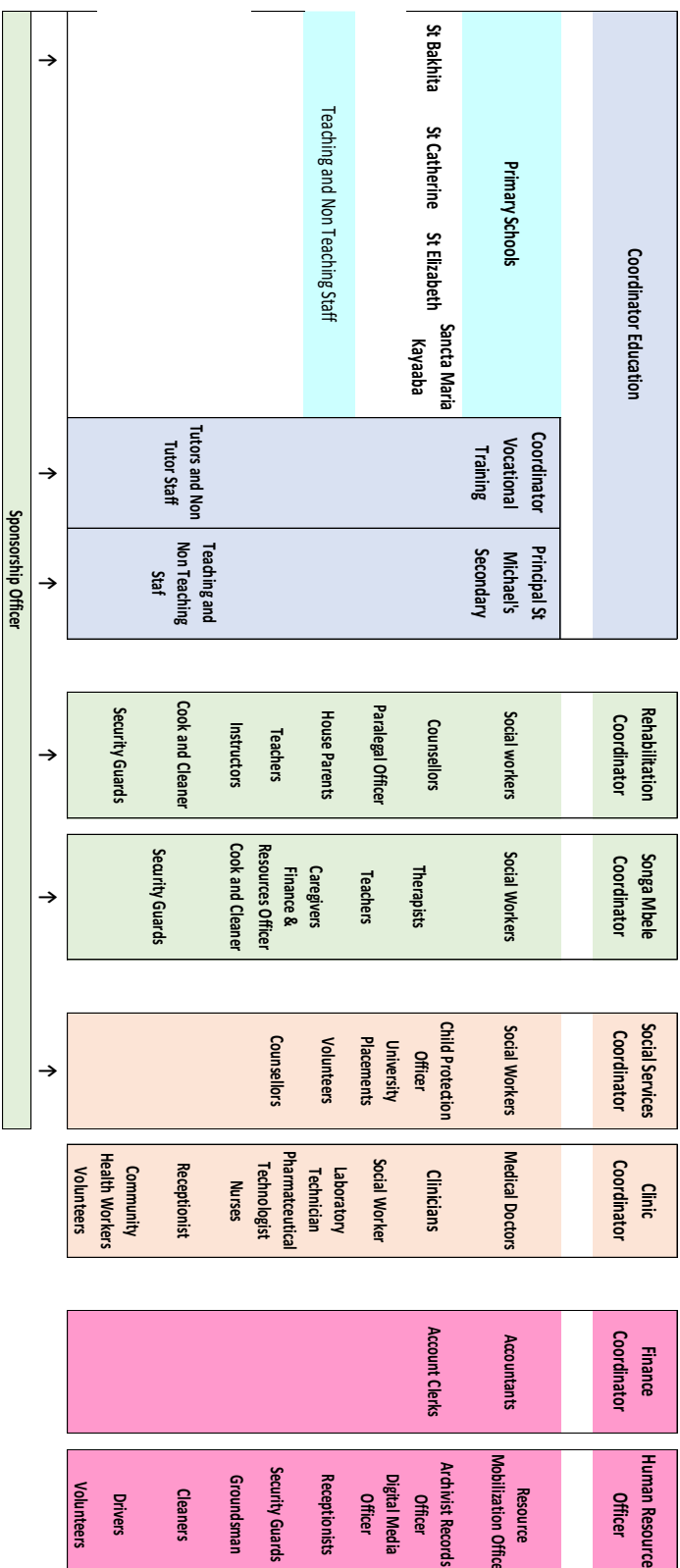
Executive Development Officer

Education Services

Welfare Services

Social & Health Services

Administration



Human Resources

There have been many developments at MPC since 1985. The organizational chart demonstrates the evolution in the different disciplines. Many challenges were experienced in 2021 to Human Resources, especially in the education sector and school security.

The Government commenced an aggressive recruitment drive for an extra 10,000 full-time teaching positions across the country. Throughout the year, much disruption was caused to the staffing levels in the schools as the Government transferred the primary teachers, head teachers and offered the teachers permanent and pensionable positions. Also, the County Government slowly withdrew security services in primary schools over the last 12 months that created significant security issues for schools. To reduce the risk of vandalism at the schools MPC had to fortify the four primary schools. Several security officers who were contracted on a casual basis for a period, were absorbed into the payroll making a difference in our overall costs. The number of MPC employees increased to 152 people, 6 more than 2020.

Mukuru Promotion Centre Senior Administrators

Sr Mary Killeen RSM

Director

Dinah Mwendwa

Executive Development Officer

Jane Kenders

Human Resources Officer

Perpetua Moragwa

Head of Finance

Ignatius Mugo

HOD Rehabilitation Centre

Sr Mary Akinyi SAS

Songa Mbele na Masomo Coordinator

James Njuguna

HOD Social and Health Services

Boniface Njoroge

HOD Clinic

Jasper Obiri

Principal St Michael's Secondary

Jacqueline Kiio

HOD Vocational Training Centre

Stellah Mathe

Sponsorship Coordinator

Luciah Njogu

Education Coordinator

Salome Masha

Child Protection Office

MPC Staff Composition 2021

Departments	Teachers	Support Staff	Health & Medical	Social & Welfare	Admin	Total
EDUCATION						
Primary						
Sancta Maria Kayaaba	5	2			1	8
St Catherine	6	1			1	8
St Bakhita	5	2			1	8
St Elizabeth	5	3			1	9
<i>Subtotal</i>	21	8			4	33
Secondary						
St Michael Secondary	19	2			1	22
Vocational Training	9	1				10
<i>Subtotal</i>	28	3			1	32
Security						
Sancta Maria Kayaaba		3				3
St Catherine		5				5
St Bakhita		4				4
St Elizabeth		4				4
<i>Subtotal</i>		16				16
SOCIAL & HEALTH						
Social Workers				13		13
Child Protection & Safeguarding				2		2
MC Clinic		2	6		1	9
<i>Subtotal</i>		2	6	15	1	24
WELFARE						
Sponsorship		2				2
MPC Rehabilitation	3	6	2			11
Songa Mbele na Masomo	6	7	1	2		16
<i>Subtotal</i>	9	15	3	2		29
ADMINISTRATION						
Head Office		3			15	18
<i>Subtotal</i>		3			15	18
TOTAL	58	47	9	17	21	152

Education

The 8-4-4 education system has been in place in Kenya since 1985 and the new Competency Based Curriculum (CBC) 3-3-3-3-3 system was instigated in 2016. The first CBC cohort started with Grade 3s who are scheduled to complete their secondary education (Year 12) in 2025. The implementation of the CBC system continued requiring more learning materials and teachers who remained felt a big challenge to the 4 MPC schools. The parents especially felt the impact as they had to pay for the extra materials.

MPC continued to identify the most vulnerable so that they could eventually assist their families by obtaining an education. Over 5,800 pupils attended one of the 4 MPC primary schools; with a teacher / pupil ratio higher than the recommended TSC ratio; some schools performing slightly under the national averages; over 20% of KCPE candidates achieved exceptional results with parity between girls and boys.

The 2021 academic year was unusual to the education sector as the normal three term academic calendar was arranged into four terms a year to catch up on lost time due to the CoVid19 pandemic. Holidays were reduced to one week per term and parents had to pay school levies for four terms.

St Michael's Secondary School registration for three streams was finally completed in 2021. The school now has a 600 student capacity and in 2021 the enrolment was 441 which was a 10% increase of capacity to 73% with a teaching staff of 19. Out of the 441 students, 179 received sponsorship through the MPC Sponsorship Program. The enormous upheaval and disruptions from the pandemic were expected to produce lower results across the country. There were increases in absenteeism, health issues and major repercussions for parent's income. St Michael's Secondary School managed to assist the families through hundreds of food parcels, uniform assistance, shoes, counselling, mentorship programs and hygiene packages.

The vocational courses were effectively spread across a few months of 2020 and 2021 but results were listed for the year 2020. There were 125 candidates who sat the 2020 National Industrial Technical Authority (NITA) and Kenya National Examination Council (KNEC) who posted impressive performances in 2021 compared to previous years. The other public agency that monitors and regulates the vocational training courses is Technical and Vocational Education and Training Authority (TVETA). In 2021, Our Lady of Mercy Vocational Training Centre successfully received its quality assessment from TVETA.

Primary Schools

The 2020 Kenya Certificate of Primary Education (KCPE) examinations were conducted in March 2021 and a slight improvement was noted in all MPC schools. The number of pupils at the 4 MPC schools who sat their KCPE examinations was 696 being 100 from St Bakhita, 143 from St Catherine's, 205 from Sancta Maria Kayaaba, and 248 from St Elizabeth's.

Primary School Enrolments

School	2016	2017	2018	2019	2020	2021
St Bakhita	938	825	986	1,034	972	1,107
St Catherine	1,218	1,270	1,289	1,317	1,211	1,267
St Elizabeth	1,528	1,693	1,817	1,938	1,885	1,810
Sancta Maria Kayaaba	1,546	1,246	1,686	1,666	1,733	1,632
Totals	5,230	5,034	5,778	5,955	5,801	5,816

Pupil / Teacher Ratio 2021

School	No. of Teachers	Enrolments	Teacher/ Pupil Ratio	Ratio without MPC & BOM Teachers
St Bakhita	27	1,107	1:41	1:51
St Catherine	30	1,267	1:42	1:55
St Elizabeth	40	1,810	1:45	1:59
Sancta Maria Kayaaba	35	1,632	1:47	1:55
Totals	132	5,816	1:44 Avg.	1:55 Avg.

Examination Performances 2021

KCPE Subject Performance in MPC Schools 2021							
Subject Mean Scores							
School	English	Kiswahili	Maths	Science	SSRE	Mean Score 2020	Mean Score 2019
St Bakhita	50.18	47.79	50.88	50.28	49.68	248.81	236.35
St. Catherine	53.81	49.36	53.05	50.51	53.63	260.66	253.09
St. Elizabeth	52.59	48.56	46.16	46.99	50.14	244.44	231.58
Sancta Maria Kayaaba	49.71	44.94	46.24	43.01	45.89	229.81	236.43
Year Average	51.57	47.66	49.08	47.70	49.84	245.93	239.36

KCPE Mean Score over a 5 year period

School	Mean 2017	Mean 2018	Mean 2019	Mean 2020*	Mean 2021 **
St Bakhita	259.95	241.70	243.36	248.81	
St Catherine	277.92	234.62	253.90	260.66	
St Elizabeth	236.36	236.98	231.58	244.44	
Sancta Maria Kayaaba	253.82	245.44	236.43	229.81	
Year Average	257.01	239.68	241.32	245.93	

*The 2020 year was completed in 2021

**The 2021 year will be completed in March 2022.

MPC Primary School KCPE Results 2021				
School	Marks < 250	Marks 250 - 299	Marks 300 - 350	Marks >350
St Bakhita	55	19	19	7
St Catherine	58	48	31	6
St Elizabeth	136	58	41	13
Sancta Maria Kayaaba	137	42	17	9
Total number of Pupils	386	167	108	35

Top 20 KCPE Achievers at MPC Primary Schools					
Females	Score	School	Males	Score	School
Soita Elizabeth Wamboi	394	St Elizabeth	Kiplang'at Desmond	386	St Elizabeth
Irine Agola Odhiambo	386	St Catherine	Oirere Kennedy Onyango	381	St Bakhita
Joshua Silvia Nyarinda	383	Sancta Maria	Ombati James Aburi	378	St Bakhita
Ademba Clare Atieno	379	Sancta Maria	Joy Gideon Makau	374	Sancta Maria
Musembi Ruth Ndanu	377	Sancta Maria	Obambo Reagan Onyango	370	St Elizabeth
Otieno Nereah Aida	374	St Bakhita	Simiyu Jacob Masika	370	St Elizabeth
Mang'ula Mary Matendechele	365	St Elizabeth	Otieno Edgar	369	St Bakhita
Osteno Marion Adlight	363	Sancta Maria	Elisha Ochieng Owino	367	St Catherine
Naomi Sintamei Joseph	361	St Catherine	Odhiambo Joseph Were	367	St Bakhita
Purity Wanza Mongela	361	St Catherine	Paul Nyamogara	364	St Catherine

MPC has continued to lobby the Ministry of Education for assistance with the feeding program since 2016. There is little hope of the Government supporting the feeding program in the primary schools even though the poverty in our community worsened considerably in 2021.

The Schools' Feeding Program for approximately 6,000 pupils was supported by a local donor Team Pankaj as well as others affiliated to MPC. The logistics of moving tonnes of provisions around the five sites takes a considerable amount of organizing, personnel and transportation.



Pupils at lunch

The table below captures the approximate food provisions for 2021 to the 4 Primary Schools, Secondary School, Rehabilitation Centre, Vocational training Centre, Social Offices and Songa Mbele na Masomo Children's Centre.

Food Items	Quantity	Items	Quantity
Maize Meal	21,100kgs	Tomato Paste	118.8kgs
Rice	3,380kgs	White Peas	1,950kgs
Maize Kernels	2,000kgs	Porridge	2,880kgs
Beans	8,540kgs	Green Grams	507kgs
Njahi	1,000kgs	Green Vegetables	500kgs
Salt	562kgs	Hard Vegetables	1,453kgs
Spices	15kgs	Mixed Vegetables	314kgs
Cooking Oil	900lt	Sweet Potatoes	3,300kgs
Sugar	62kgs	Bananas	110kgs



St Elizabeth Pupils



St Bakhita Pupils

St Michael's Secondary School

In the context of the disturbance and turmoil, St Michael's candidates sat their year 2020 National Examination (KCSE) in March / April 2021. Nationally, a total of 743,299 candidates sat for 2020 KCSE examination with a composition being 380,327 males (51.1%) and 366,834 females (48.9%). The national figure highlighted that 30% of primary pupils do not complete secondary education. Thankfully this figure is slowly decreasing due to a combination of efforts from the Kenyan Government, private enterprise and sponsors.

The KCSE national figures stated that 19% of all the students who sat the examinations met the minimum requirement to join local universities. St Michael's Secondary results were just shy of the national figure at 18.3%. There were minor fluctuations with some subjects. The 2020 KCSE candidates who sat exams in 2021 totaled 101 with 12 candidates, 4 girls and 8 boys who obtained eligibility for Government sponsored university courses. The remaining 89 students will be able to enroll in vocational training courses.

KCSE 2020 Performance by Gender

Overall Summary Grades										Mean Scores		
Candidates		B	B-	C+	C	C-	D+	D	D-	2020	2019	2018
Boys	63	2	2	4	10	13	20	10	2	4.77	4.69	3.94
Girls	38		3	1	5	10	13	6	0	4.76	4.00	3.76
Total	101	2	5	5	15	23	33	16	2	4.77	4.28	3.89

*KCSE 2020 was held in 2021

The quest to improve girls' education received a substantial boost through the Fidel Goetz Foundation. The first year in a five year plan aims to increase the number of girls completing secondary education by 30% by 2023 with a C+ average to ensure university entrance.

The Macheo Program is another plan conducted by Strathmore University that commenced at St Michael's Secondary School in 2016 to increase student's academic abilities. The first Macheo cohort successfully completed their 2020 KCSE. In 2021 the composition of the St Michael's cohort had 10 Form 4s, 9 Form 3s and 9 Form 2s registered in the program.

St Michael's Secondary School has been acutely aware of the arduous strains placed on the students every day and have endeavoured to reduce the anxiety as much as possible through mentorship programs, sporting competitions and cultural days. The talents demonstrated by some students were outstanding.

KCSE 2020 Results by Subject

Kenya Certificate of Secondary Education 2020 Subjects Results*																Mean Score	Grade Avg.
Subjects	Candidates			A	A-	B+	B	B -	C+	C	C-	D +	D	D-	E	2020	2020
	Male	Female	Total														
Mathematics	63	38	101		2	1	2	2	1	2	5		13	35	38	2.54	D
English	63	38	101			1	7	13	18	16	23	8	14	2		5.84	C
Kiswahili	63	38	101				2	13	6	12	15	18	30	5		4.78	C-
Chemistry	63	38	101				1	1	1	1	2	3	22	57	12	2.43	D-
Biology	30	32	62					1	3	2	2	4	27	20	3	3.08	D
Physics	32	7	39				1	1	3		1	14	13	4		3.25	D
CRE	63	38	101			4	6	12	17	18	19	6	19			5.87	C
Geography	16	10	26			7	5	9	2	1	2					8.34	B-
History	47	28	75		2	7	19	20	10	5	3	5	4			7.60	B-
Business Studies	37	22	59				1	7	1	6	2	4	28	9	1	4.01	D+
Agriculture	26	16	42	2	1	9	12	3	6	3	4	3				8.19	B-

Macheo Students 2020 KCSE Results													
Students	Mean Grade	AGP	101 ENG	102 KISW	121 Math	231 Bio	232 Phys	233 Chem	311 His	312 Geo	313 CRE	443 Agr	565 Bus
Amou Athian	C+	50	B+	B-	D-	B-		D	B		B+		C+
Andrew Nemuel	C+	51	B-	B	B-	D+		D+	B+		B-		D
Anne Betty Mathuva	C	45	B	B-	D	C		D	B-		B		B-
Ashapenaz Oseko	B-	53	B	B-	C	C-		C-		B+	B+	B+	
Ian Wasike	C+	50	B	B-	C-		C	D		B+	B		B-
Peris Njeri	B-	57	B-	C+	B	C		C-		B+	B+	A	
Sophia Adhiambo	B-	59	B-	B	C+		C	B-		B	B-	A	
Stephene Mwendwa	C	41	C+	C-	D	C+		D	B		C+		C

Fortunately, during the year a number of organizations accommodated St Michael's goals to lift the standards of education through their generosity. The school's computer laboratory received an upgrade with 20 near new computers from Absa Bank, Kenya. As a result, there was an immediate impact and Computer Studies was one of the best performing subjects due to extra time students could practice.

The Fidel Goetz Foundation sponsored over 30 secondary students, Vivo Energy, Kenya also sponsored 10 students, the Macheo Program supported 22 students and Team Pankaj helped with the feeding program across the year.



St Michael's Form 4 students Mentorship Program.

St Michael's continued to keep its parents informed of the constant changes issued by the Ministry of Education. The students enjoyed the excursions, cultural, and sporting days in 2021 within the limitations of CoVid19 pandemic.

St Michael's Secondary School Activities For 2021 Academic Year		
Academic	Sporting	Cultural
Subject lessons and Pre-mock examinations	Athletics	Drama and Music
Science Experiments and Excursions	Basketball	Mentorship Program
Remedial Program	Soccer	Safeguarding
Interschool competitions	Netball	Hygiene and Health Protocols
		Spirituality Formation

Inter school competitions were banned by the Government due to CoVid19 and the extra-curricular areas of achievement for St Michael's were with the boys' and girls' soccer teams but all activities were held on campus.

Our Lady of Mercy Vocational Training Centre

Enrolments were critical in keeping the Centre open and flexible admission options were created. Students were held in a state of flux as scheduled examinations were cancelled twice and some students did not return due to the uncertainty. The unstructured time enabled a maintenance program to be carried out at the Centre. When classes resumed the terms were shortened from 14 weeks to 11 weeks and holiday periods reduced from 4 weeks to 1 week. All courses were revised to accommodate the shortened curriculum time and practicals. Other elements were introduced to ensure that students would have an advantage when applying for positions after graduating from their course such as French classes and computer packages.

In support of the United Nations's 2030 Agenda for Sustainable Development and inline with MPC's strategic goal to promote behavioural change with environmental management, the new initiative of the Waste Electronic and Electrical Equipment (WEEE) project commenced with the Arts students. The issue of e-waste management has become part of the broader sustainable development plan. E-waste is the fastest growing waste stream in Kenya (*source: UNEP*).

Building during a pandemic proved to be grueling in many areas with supply chains, labour shortage and construction meetings. The therapy building was 95% completed by December 2021. The new facility will provide greater accessibility to the Special Needs Youths from Mukuru slums. The building was sponsored by Manos Unidas, Spain, Jerry and Helen Killeen, Ireland, Marcellus Zuzarte, Canada, Audrey Fernandez, Canada, Hyacinth Zuzarte, Canada, Salvatore and Carmela Lobue, Italy and Mukuru Liverpool, England.



Therapy Facility For Youths with Disabilities

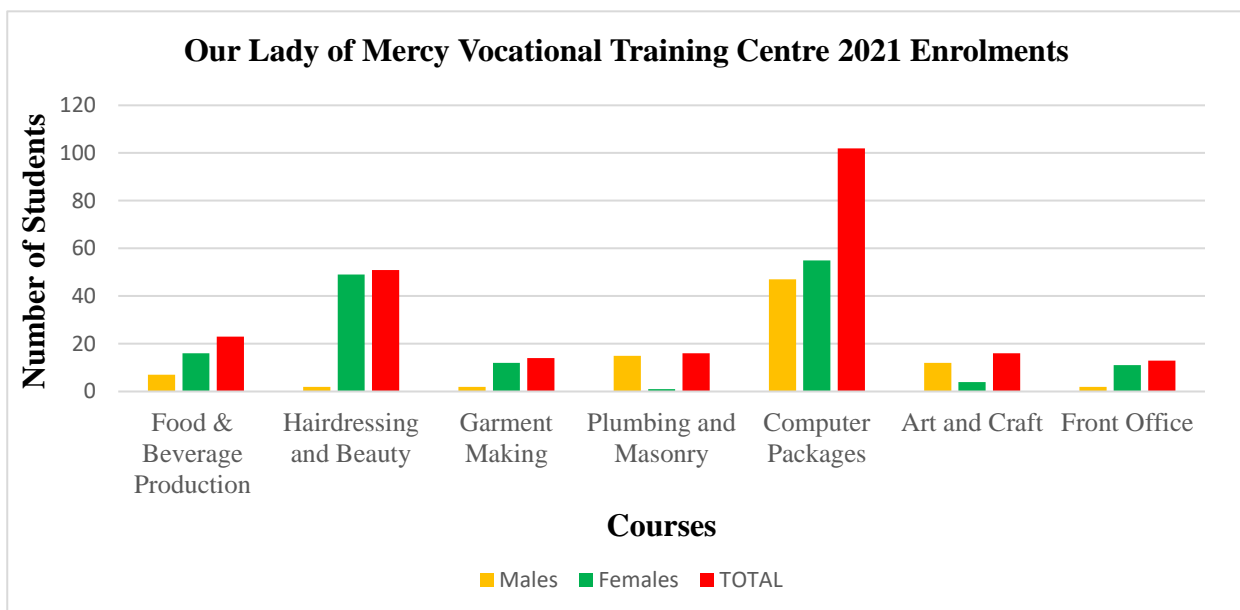


Youths with Disabilities

NITA 2020 and KNEC / Internal Examination Results

Courses	Males	Females	Grade >75%	Grade <74 – 50%	Failed	Total
Hairdressing	2	24	23	2	1	26
Beauty	2	22	22	2		24
Food and Beverage Production	4	12	12	4		16
Food and Beverage Service	4	13	16	1		17
Plumbing	13	1	11	3		14
Masonry	13	1	10	4		14
Dressmaking / Garments		5	5			5
Front Office Management KNEC		9	6	2	1	9
Computer (Internal)	47	55	86	16		102
Deejay (Internal)	6	1	5	2		7
Total	91	143	196	36	2	234

Over 80% of the 2020 students successfully obtained employment while four students established their own hairdressing salons.



The Centre's Annual Arts Exhibition 'Talent Exposed' continued to grow and raise awareness of the quality of student talent in the slums. The exhibition furnished the students with a source of income. The items ranged from dresses, handbags, jewelry, cakes, art and small sculptures.



2021 Art Exhibition



Social and Health Services

The 3 main sectors that constitute the Social and Health Services are Education, Health and Welfare. The greatest interventions recorded were in education being 84.6%, followed by welfare at 8.65%, and then health at 6.75% rate. Fires and floods are part and parcel of life in the slums and people lose everything. The 9 social offices with 12 fulltime social workers outreached to massive numbers of needy community members within Mukuru slums. In 2021 thousands of homes were destroyed to make way for the Government's roads infrastructure program and resulted in considerable loss of possessions.

With the support from donors and well-wishers the Social and Health Services Department was able to offer various intervention services such as nutritional and medical support, guidance, counselling, hygiene materials, food parcels, clothing donations and mentorship for the youths. The neediest students and parents were identified and supported through motivational talks, life skills sessions, mentorship, psychosocial support, awareness of child protection and effective parenting. Various profiles were completed for the pupils and students who required sponsorship. Home and hospital visits were conducted as well as follow-ups to monitor the progress of the children. Through the support of donors, small businesses were also established for the disadvantaged youths and parents to earn an income to support their families.

To reduce the number of child abuse cases, MPC partnered with other like-minded organizations such as the Chiefs, Community Chairman, Police Officers, Sub-County Children's Officers and the Directorate of Criminal Investigation's Children Unit to ensure all cases of child abuse are reported accurately and with transparency. The Child Abuse Awareness campaigns were organized on the rights and safety of children and 115 MPC staff were trained on Safeguarding.

There were increases in different areas of the MPC Clinic in 2021 compared to the previous year. Much of this can be accredited to the lifting of lockdowns from the CoVid19 Pandemic. For registrations of new and revisits increased 61% from 13,223 up to 20,361 with slightly more females than males. There were 3,887 clients utilizing the various clinics such as Antenatal, Child Welfare, Comprehensive Care and Nutrition. The unprecedented power spikes and outages led to the Clinic upgrade to the Vision-EMR medical system which resulted in less challenges and better reporting.

Social Services

Each day over 100 clients from the community and MPC learning institutions were served in some capacity throughout 2021.

Compared to MPC 2020 figures the numbers of child abuse cases slightly reduced from 61 to 56 pupils in 2021. The cases ranged from physical, emotional, negligence and sexual abuse. All MPC cases were resolved through collaborative efforts. The Child Protection and Safeguarding Office conducted 53 case follow-ups.

MPC recorded only 29 new cases of teenage pregnancies in 2021 compared to 40 cases in 2020. The Office also supported 42 teenage mothers with pregnancy support packages. Free sanitary towels were provided to over 999 girls that enabled them to attend classes. The Office identified that a 'safe house' for girls is necessary to ensure further protection against abuse from immediate family, relatives or the community. The increase in absenteeism due to high poverty levels within the community is a major concern for pupils / students as they try to support their families.

Supervision was provided on the capital works program for the building of disability friendly toilets at St Catherine's, St Elizabeth's and Sancta Maria Kayaaba Primary Schools.



International Women's Day March 2021

Summary of Client Interventions for 2021

No.	Case type / Activities	Education						Health	Welfare		Total
		St Bakhita	St Catherine	St Elizabeth	Sancta Maria Kayaaba	St Michael's Secondary	Vocational Training Centre SKILLS	MPC Clinic	Songa Mbele na Masomo	MPC Rehabilitation Centre	
1	Abuse Cases	7	2	21	22	2	1		1		56
2	Amaranth Adult Clients		821								821
3	Amaranth Babies & Child Clients		286								286
4	Behavior and Discipline Cases	14	11	73	27	26	13		1	20	185
5	Business Startup / Booster	6	3	3	3	3	2		8		28
6	Counseling and Guidance sessions	18	67	73	48	71	71	10	84	37	479
7	CoVid19 Hygiene Material Resources	6	207	58	30	13	218	3	45	3	583
8	Donations Issued	15	570	1844	53	514	123	7	42	29	3,197
9	Donations Received	80	64	42	46	41	3	5	63	125	469
10	Fire and Floods Disaster assistance	89	27	120	301	11	8	1	7		564
11	Food Distribution	84	557	112	186	103	20		64	1	1,127
12	Home Visits	73	114	78	142	49	23	29	101	31	640
13	Hospital Visits (to other Hospitals)	13		2	2	5		67	3	19	111
14	Malnourished Babies		343	3					1		347
15	Medical Cases (to MIC)	125	414	1837	292	181	38	1117	95	137	4,236
16	Meetings and Trainings	13	15	14	10	21	18	17	60	17	185
17	Mentorship Sessions	118	16	9	11	6	14		9	1	184
18	Mobilization of Resources	50	50	134	130	30	20			3	417
19	Needy Families Support (Community)	16	216	85	12	14	46		11		400
20	Needy Students/Children	31	89	36	38	61	1				256
21	Networking	4	81	41	26	15	17	29	37	16	266
22	New Admissions to MPC Institutions		77	56	30	35	191		38	35	462
23	New Teenage Pregnancies cases	12	2	5	9	1					29
24	Nutritional Support	382	665	66	64	149	7	2	1		1,336
25	Placement (job/internship experience)						16			4	20
26	Pregnancy Support Packages	35		1		1	5				42
27	Provision of Sanitary Towels	21	424	453		45	4	6	46		999
28	Referrals (except medical)	43	128	58	100	114	37	238	80	3	801
29	Safeguarding Follow Ups	0	3	30	5		2	7		6	53
30	School Absenteeism/Truancy	194	979	203	344	151	20		46	1	1,938
31	Schools Profiles	142	200	89	127	357	142		99		1,156
32	School Visits					2	1	1	6	1	11
33	Songa Mbele Therapy Sessions								397		397
34	Sponsorship Follow-ups	37	134	41	5	10	90		117	35	469
35	Uniform Aid		71	125	33	41	4		1		275
	Totals	1628	6636	5712	2096	2072	1155	1539	1463	524	22,825

Mary Immaculate Clinic

The Clinic treated 20,361 patients, conducted over 7,700 laboratory tests that encompassed around 9 communicable diseases in 2021, which was a slight increase from the previous year due to additional medical equipment donated for improved services for patients.

The Clinic was fortunate to have 4 volunteer doctors from Slovakia, East Timor and Kenya. St. Elizabeth's University, Slovakia has provided 2 volunteer doctors each year for the last 20 years and Dr Monica Palockova and Dr. Renata Misakova continued the program for 2021 and for the last 12 years Dr. Nina Rangel from Timor-Leste. This year a local doctor from Kenya Dr. Lango, also assisted one day per week. For the first time the Clinic received 2 volunteer interns on attachment, one from University of Nairobi and the other from Kirinyaga University.

The Clinic proceeded throughout the year with the deworming program for all pupils and students attending MPC learning institutions. Under the specific clinics held over the year a total of 1,551 children were immunized and 847 pregnant mothers attended antenatal checkups. The HIV program has had a continuous growth with 46 clients and the tuberculosis registrations numbered 32 clients were placed on the 6-month course of medication and follow-up.

The Ministry of Health dispensed support through its monthly tuberculosis supervision from the Sub-County Tuberculosis Coordinator. Staff attended a number of medical training workshops organized by the Ministry of Health covering chest medicine (tuberculosis), childhood tuberculosis, HIV, and Infection Control. Other training courses were held throughout the year being fire-preparedness training, infectious disease surveillance and mother to child transmission (PMTCT) of HIV Aids.

The donation of medical equipment was from the Safaricom Foundation that ensured effective triaging of patients as well as precise diagnosis. The Slovak Aid Grant supported the employment of a nurse who specialized in nutritional health. The minor donations of dressing equipment, inhalers, sterilizing tablets, tongue depressors, glucometers, cough syrups and sanitizers that all contributed to patient care, were provided by local and overseas donors Dr Patel, Beta Healthcare International, Chemoquip, Safaricom Foundation, Dr Jabbal, Slovak Aid, Slovakia, Irene Plunkett and Friends, Ireland.



*Pauline Wahome - Safaricom Foundation
with Sr Mary Killeen*

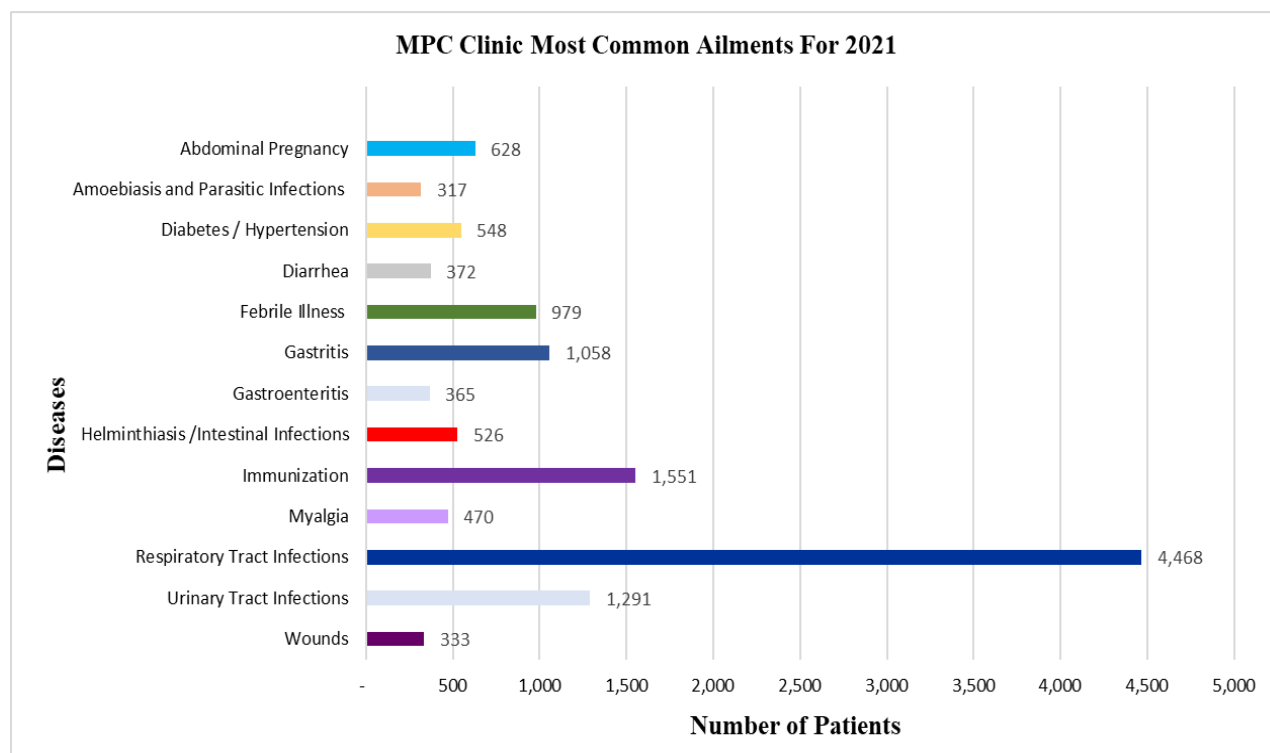
MPC Clinic Registrations Statistics for 2021

In addition to the treated medical patients, 3,887 clients attended the other clinics offered: 2,248 Child Welfare, 46 Comprehensive Care, 746 Nutrition and 847 mothers attended the Antenatal Clinic.

Patients Treated at MPC Clinic For 2021						
Category	Gender	Under 5	6-17 Years	18-35 Years	Above 36 Years	Total
New Cases	Male	1692	1190	1124	865	4871
	Female	1608	1278	2245	1156	5780
		3300	2468	3369	2021	10651
Revisits	Male	1660	884	1022	875	4441
	Female	1466	745	1478	1073	4439
		3126	1629	2500	1948	8880
Total		6426	4097	5869	3969	20,361
Percentage	Male	52.10%	53%	38%	47%	47%
	Female	47.90%	47%	62%	53%	53%

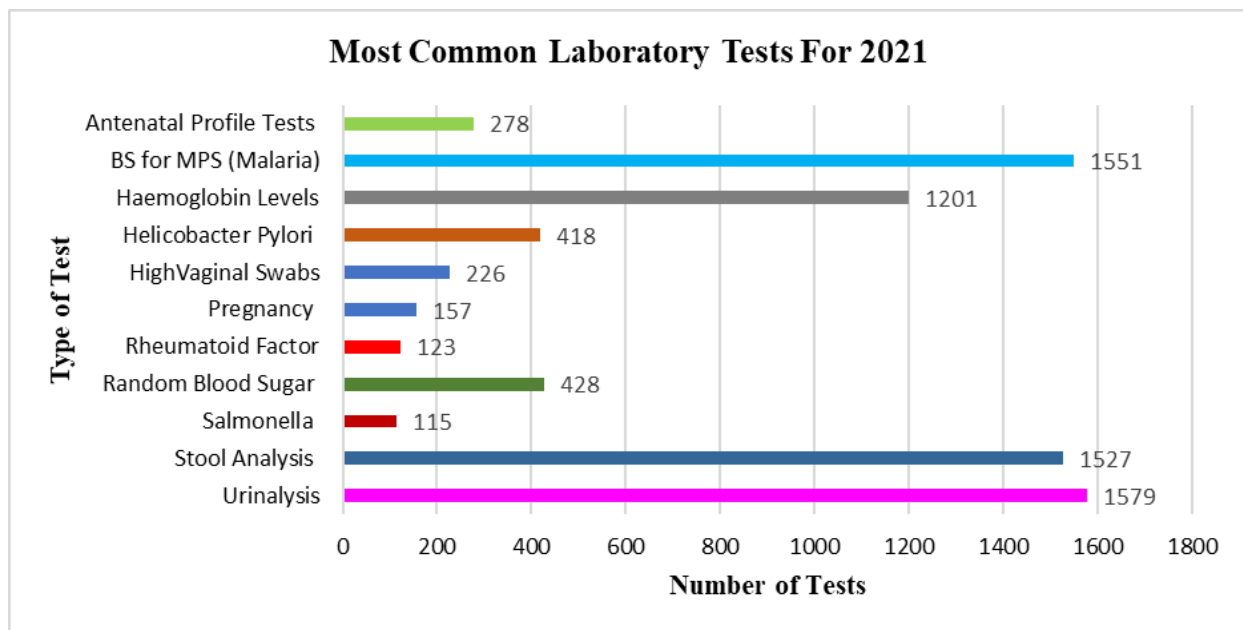
MPC Clinic Most Common Diseases

Respiratory diseases continued to be the most treated illnesses at the Clinic followed by Gastrointestinal diseases.

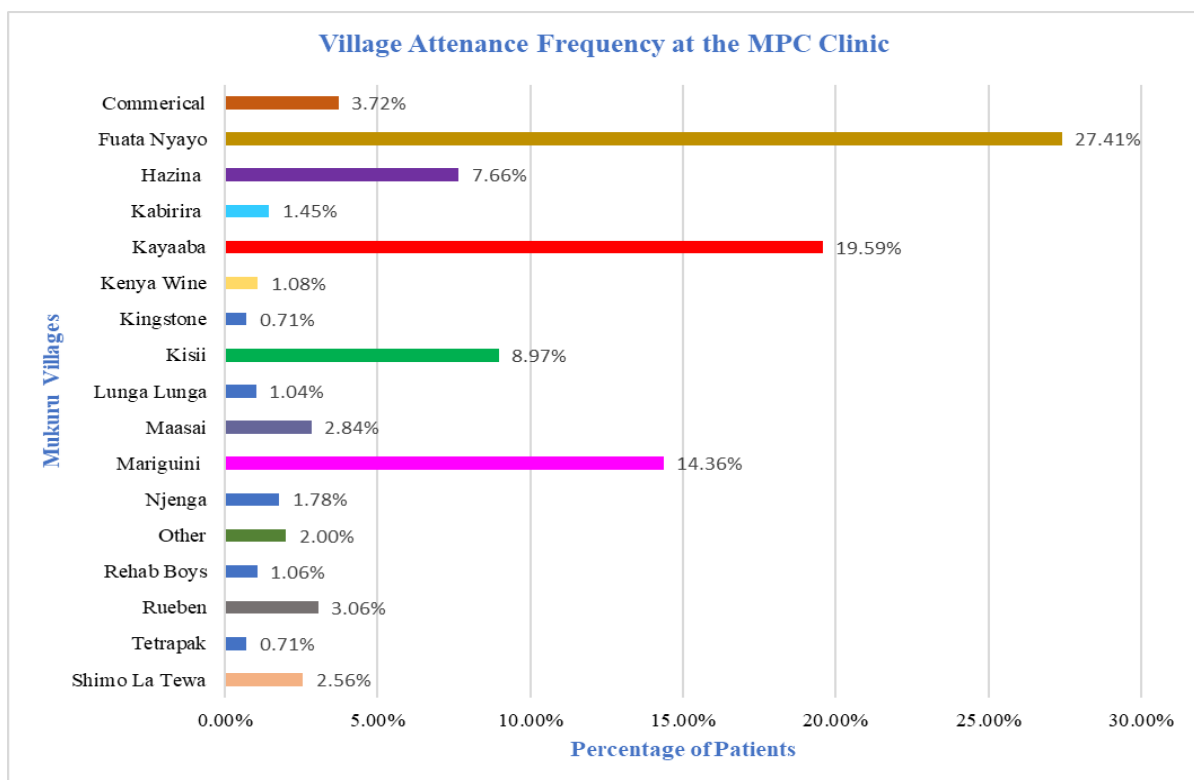


Clinic Laboratory Tests For 2021

There were 7,787 laboratory tests conducted in 2021 with an average of 30 tests performed each day. The table below shows the most frequently performed tests.



Over 45% of patients who attend the Clinic live within a 200 metre radius while another 31% live less than 500 metres away.



Welfare Services

Flexibility, resilience, versatility are a few adjectives that describe 2021 as the demand for MPC's welfare and social outreach services were extremely high exasperated by the pandemic.

The new rehabilitation cycle began in September / October instead of February / March due to the CoVid19 restrictions. Over 50 boys were recruited, however, most of them relapsed immediately. After a further recruitment process was conducted the new group was inducted into the residential program with its various components and stages. The new cohort (63) participated in the educational, social, physical, spiritual, psychological, training and interpersonal communication dimensions of the program. Parents formed an important part in the reintegration process.

The Songa Mbele master plan is truly completed with an ambience to match. The new multistorey facility was handed over in June 2021 to MPC. The purpose-built amenity has several classrooms, therapy rooms, offices, large dining and multipurpose room and sensory room. New furniture and equipment were purchased for the classrooms and offices. The external works included pathways to the playground, wheelchair circuit and sensory garden. The area needed major site levelling with multiple gabions, landscaping and grass that has beautified the whole compound. The types of disabilities currently at the Centre are: **cerebral palsy, autism, hydrocephalus, down syndrome, itchthyosis, hearing and speech, learning difficulties, delayed speech, intellectual disabilities, attention deficit hyperactivity disorder and multiple disorders.**



Completed New Facility

The major development for the Sponsorship Program in 2021 was the database that enabled sponsors to access up-to-date information on their sponsored student/s. With the unpredictable times of the CoVid19 Pandemic and with the fluctuation from the Ministry of Education, the Sponsorship Program provided certainty to over 450 pupils and students with 23 being orphans.

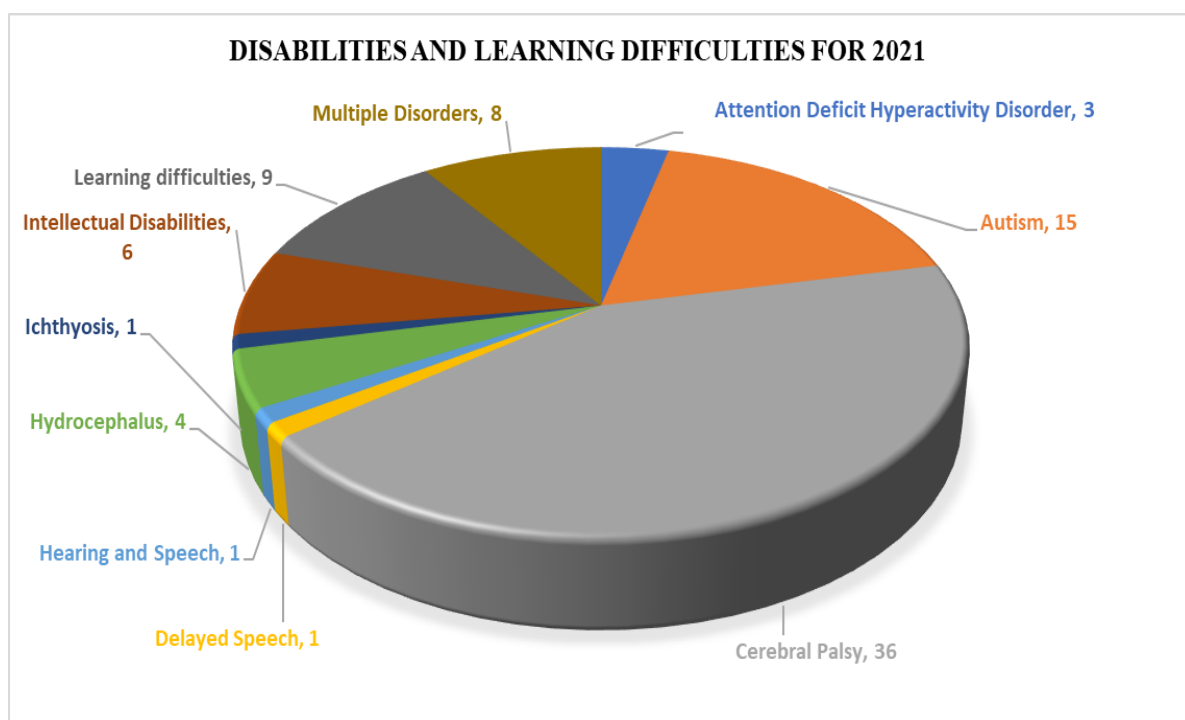
Songa Mbele na Masomo Children's Centre

The next few years will require firm evolution of services to achieve its full potential as a learning and development Centre for children with disabilities. Over the years the Special Education Professionals (SEP) has conducted training for staff on specific learning disabilities, appropriate intervention strategies and assistance with utilizing learning materials suitable for children with disabilities. The Individual Learning Plans (ILP) for each child will be the focus of the next stage of development. This helps the teachers to plan on how to achieve specific sets of goals of a learner for a specific period of time, for the teacher to know the strength and weaknesses of a child and to monitor the performance of the child whether the child is improving or not.

Throughout 2021, 75 children received therapy, specialized diets, hygiene, stimulation, exercises, learnings and fun. The 22 school dropouts who were enrolled in the Coaching class were exited to mainstream schools to ensure more availability for Special Needs children. There were 31 new admissions and the total enrolment for the year were 84 children.

Depending on the child's capability they were placed in one of four categories for learning and therapy: Daycare {21}, Unit 1 {20}, Unit 2 {12}, Unit 3 {3} and Outside clients {10}. Therapy sessions included body massage for muscle relaxation and improve blood circulation, sensory integration activities to reduce hyperactivity, increase concentration, attention span, eye hand coordination and eye contact. The resistance exercises build muscle strength and power.

The balance exercises help to build strength, improve posture stability and coordination. All these were conducted throughout the year and parents actively performed home based therapy exercises. Great improvements were noted in the children who consistently attended therapy.



Mary Immaculate Rehabilitation Centre for Former Street Boys

After the various assessments, the new group were designated to particular learning levels and received formal education in regular primary and secondary schools while others received accelerated learning lessons or vocational carpentry classes. As part of its overall wellbeing and building character all the boys joined in the extra curricula activities such as arts and crafts, gardening, catechism classes, basketball, soccer, rugby, friendly games, community service projects, dancing, acrobatics, competitions and agriculture. The boys managed to build 2 greenhouses to supply fresh vegetables.

Rehabilitation Centre Composition 2021

Classes	Accelerated Learning Class	St Catherine Primary	Vocational Training	Secondary School	Totals
Year 1	19				19
Year 2	12				12
CBC Grades					
Grade 2					
Grade 3		5			5
Grade 4					
Grade 5		1			1
Grade 6		1			1
Grade 7		3			3
Grade 8		4			4
Grade III			1		1
Grade II			13		13
Secondary Grades					
Form 1				2	2
Form 2				1	1
Form 3					
Form 4					
University			1		1
Total	31	14	15	3	63

Home visits identify the probability of boys reintegrating with family. Some parents/guardians were not able and others were not willing to take the boys back and therefore they remained at the Centre for a longer period while attending schools through our sponsorship program. As a consequence, in 2021, 10 boys were successfully reintegrated back to their families. This was not a large number compared to previous years and much of this disparity can be attributed to CoVid19 impact. The boys who were exited, 5 of them obtained industrial attachments.

Parents' Day was held in June while graduation took place in July. After graduation, the boys' transit from residential to aftercare. At the end of 2021 we had 13 boys in aftercare who are attending formal education in secondary and vocational schools. The reunions witnessed between parents and children were joyous as the parents were happy to receive their children as some were thought to be lost or dead. The parents were delighted to see the improvements in their sons. Tevin's mother for instance was so happy to receive him back as the boy had vanished from home and they could not trace him.



Graduation Cake



Mother reunited with her son



Tevin Salama visits his mother.

For over 25 years MPC has actively sought collaboration with local businesses to assist the boys with apprenticeships and industrial placements. Many of the local businesses closed due to the CoVid19 pandemic which impacted on the industrial placements.

The Mary Immaculate Rehabilitation Centre ensures that every effort is exercised to engender success with the graduates to the aftercare transit program successfully by constant follow ups and when required the necessary intervention steps to make this happen. The follow-ups on boys exited from the Centre is normally conducted monthly for 3 months and then quarterly for the next 3 years. The Centre in 2021 managed to successfully rehabilitate 12 boys. One particular young man, Peter Kamau, underwent the program in 2018 and received sponsorship from Vera Smith, Ireland to continue with his carpentry studies. Peter graduated and is now a qualified carpenter with his own business.

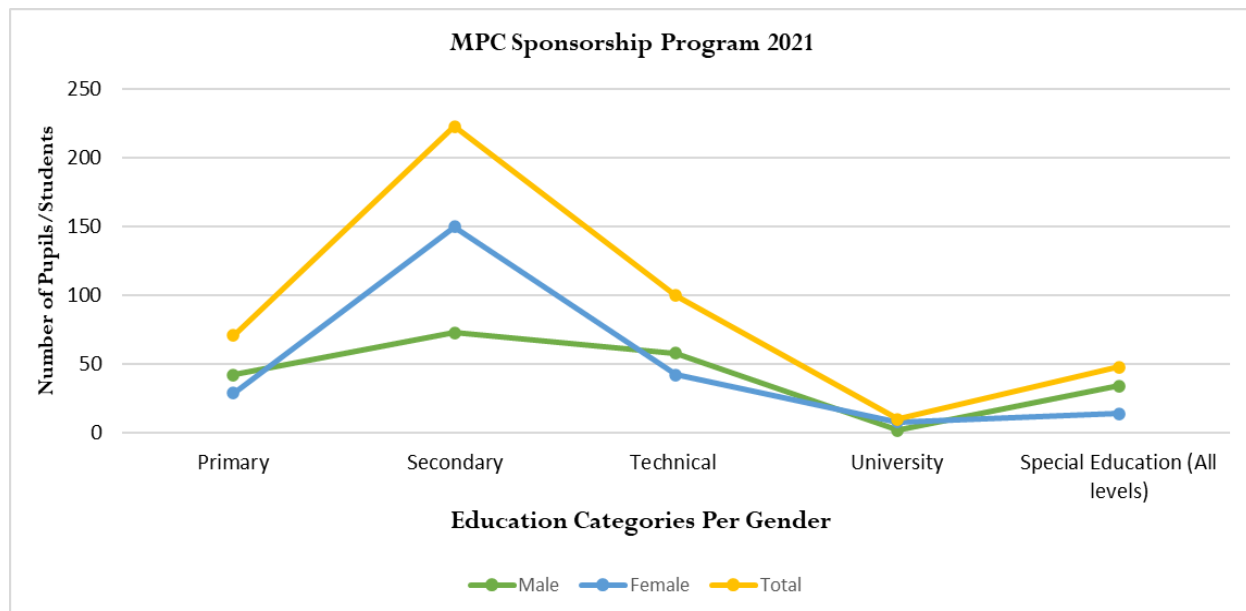


Social rehabilitation is a complex project and the efforts by donors have demonstrated their solidarity with the Centre as it endeavoured to provide important opportunities for the boys' potential to mature and prosper. Much appreciation to Frank and Paula Cullen and Friends, Ireland, Brothers and Sisters in Need, Germany, Friends of Father Helmut, Germany, Claire Chambers and Calary Church, Ireland and Team Pankaj, Kenya.

Sponsorship Program

There was an increase in the number of sponsors, which now stands at 91 individuals and 13 corporates / trusts. Even with the turbulence of the pandemic the overall number of sponsored students increased slightly in 2021.

The number of Special Needs students decreased to 48 from 102 in 2020 which is a direct result of families not able to afford the fees.

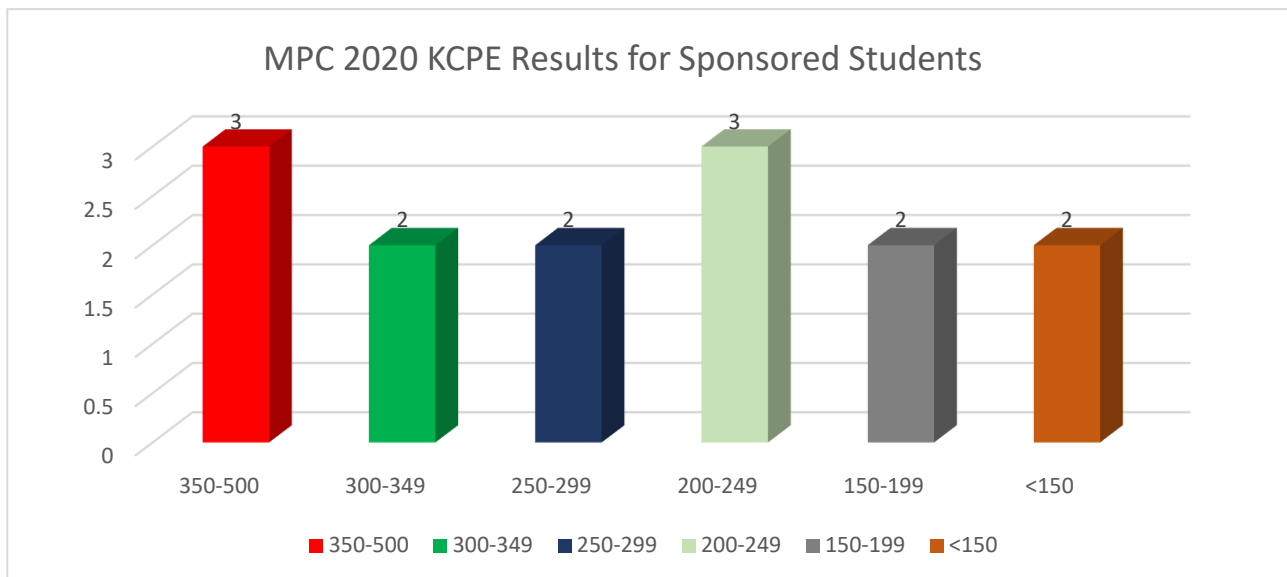


All Education Level Sponsored Students from 2015 - 2021								
Year	2015	2016	2017	2018	2019	2020	2021	Total
No of Students	270	294	314	269	277	400	452	2,276

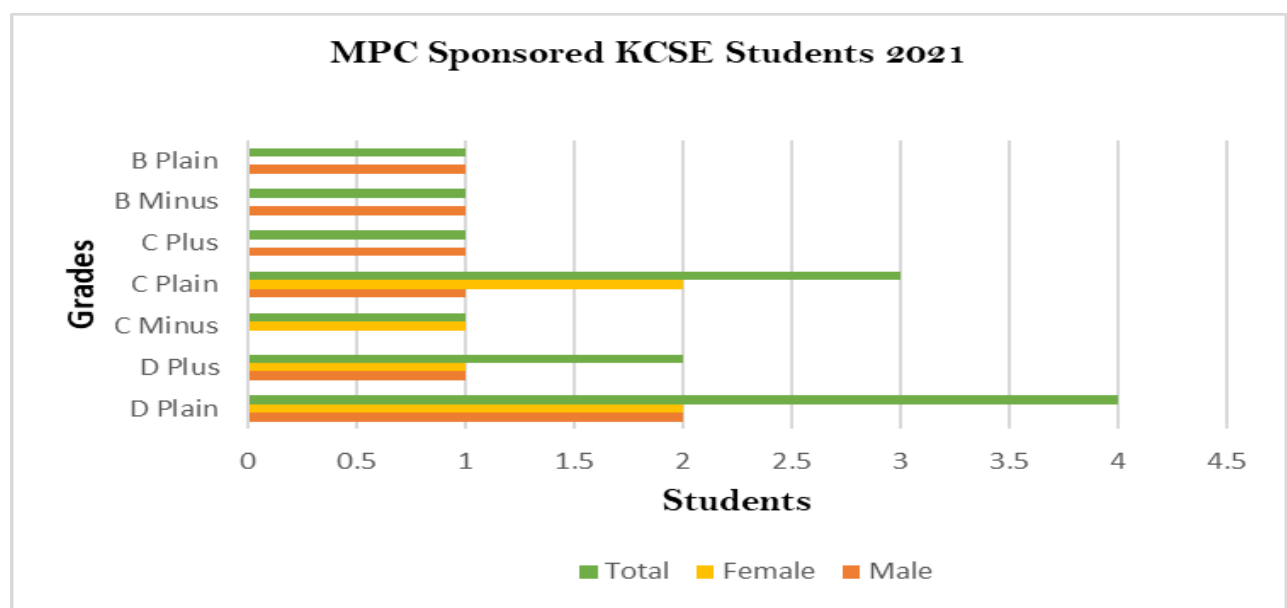
The pupils and students were enrolled in 62 institutions across 16 different counties: Bungoma, Busia, Embu, Kiambu, Kirinyaga, Kisii, Kitui, Laikipia, Machakos, Makueni, Meru, Murang'a, Nairobi, Nakuru, Nyeri and Siaya.

The sponsored students who sat their KCPE and KCSE numbered 14 and 13 respectively. Given the disruptions in the academic year the results are reflective of the ambivalent environment. Approximately 50% of the pupils performed well with strong possibilities for secondary and tertiary levels of education.

The National Examinations for Class 8, Grade 4 and Form 4 students were held in March / April. The Class 8 assessments were carried out in all the 4 MPC Primary Schools: St Elizabeth {16}, Sancta Maria Kayaaba {18}, St Catherine's {12} and St Bakhita {12} to identify the needy ones who would possibly receive sponsorship to secondary school upon meeting the specified criteria.



The KCSE male candidates obtained the highest scores in 2021, however the female achievements dramatically increased from the previous year.



The 3 Sensitization Days provided opportunities for parents to be well informed of the changes in education. The days ensured that the sponsored students received the right study tools to help with their performances as well as personal development.

Mentorship talks were conducted by several local companies engaging the Class 8 pupils from MPC primary schools to encourage them about the sponsorship opportunities to high school to help curb early marriages, teenage pregnancies and substance abuse due to school drop-out. A major development included the partnership with the Goetz Foundation to significantly boost girls' education by sponsoring 30 secondary female students.

Inspiring Solidarity

The 77 students at Our Lady of Mercy Vocational Training Centre were overjoyed to have been sponsored for the year 2021; 49 of them, formerly of St. Michael's Secondary School were enrolled in computer classes. Computer literacy will give them a chance to be more efficient and productive in addition to becoming more technology conversant even as they advance their careers in the future. Peter Kamau formerly of the Rehabilitation Centre's carpentry class was privileged to receive starter kit tools to advance his career and become self-reliant. It has been a great achievement to have the sponsorship database go live on the MPC website.



Skills Computer Laboratory Class



Vivo Energy Sponsorship



Goetz Foundation Meeting with St Michael's Students



Parent Meeting

Financial Summary Statement 2021

Statement of Comprehensive Income Year Ended 31 December 2021

	2021 Kshs	2020 Kshs
INCOME		
Grants	50,657,245	40,269,029
Donations	16,729,272	19,328,472
Donations in Kind	11,212,651	7,691,263
Other Income	25,960,960	14,623,401
Total Income	104,560,128	81,912,165
EXPENDITURE		
Personnel Costs	52,669,155	44,001,825
Operating Costs	37,209,815	31,627,908
Finance Costs	255,298	188,273
Total Expenditure	90,134,268	75,818,006
Balance before Capital Expenditure	14,425,860	6,094,159
Capital Income Funds		
Capital Income	38,502,769	41,872,179
Capital Expenditure	46,571,798	35,520,900
(Deficit)/balance from capital funds	-8,069,029	6,351,278
Balance for the Year	6,356,830	12,445,437

Statement of Financial Position

Non-Current Assets		
Property and equipment	1,286,020,282	1,249,747,036
Current Assets		
Fees / Tuition and other receivables	7,620,958	6,872,915
Trust Investments	13,448,391	13,448,391
Other Investments	28,390,676	15,403,427
Cash and cash equivalents	12,488,443	17,863,574
	61,948,469	53,588,307
TOTAL ASSETS	1,347,968,751	1,303,335,344

	2021	2020
FUND BALANCES AND LIABILITIES		
	Kshs	Kshs
Fund and Reserves		
Capital Assets Fund	1,286,020,282	1,249,747,036
Restricted Funds	22,508,753	16,151,923
General Reserve Fund	13,977,126	13,977,127
Trust Funds	13,448,391	13,448,391
Fund balance	1,335,954,551	1,293,324,476
Current Liabilities		
Other Payables	5,804,693	4,599,065
Provision for Employee Benefits	6,209,503	5,411,802
	12,014,196	10,010,867
TOTAL LIABILITIES	12,014,196	10,010,867
TOTAL FUND AND LIABILITIES	1,347,968,751	1,303,335,344

Major Grants and Contributions Year Ended 31 December 2021

Grants	Kshs
Airtel Networks Kenya Ltd	550,000
Anonymous	1,152,000
Brothers & Sisters in Need	2,575,000
Cheshire Disability Society Kenya	1,311,250
Combined Services Third World Fund	752,817
DKA Austria	7,829,247
eRko Slovakia	4,695,301
Fr Helmut Huber Memorial Fund	1,297,725
Kindermissionswerk	4,724,790
Embassy of Ireland	625,000
JP McManus Charitable Foundation	6,133,750
RD Paterson & Friends	1,654,159
Pro Victimis Foundation	405,685
Sisters of Mercy Solidarity Fund	4,676,695
Sisters of Mercy, Kenyan Province	6,127,400
Embassy of Slovak Republic	384,350
Spanish Friends	3,081,499
Trocaire	520,000
Victoria Commercial Bank Charitable Trust	300,000
Inigo Barrena Urieta	392,578
Sr Assumpta Walsh & Friends	1,468,000
Total Grants	50,647,245

Major Contributions	Kshs
Mukuru Project Liverpool	1,043,241
Salvatore and Carmela Lobue	4,001,916
Sr Ann Doherty and Friends	1,051,175
Total Major Contributions	6,096,332

Other Donors

Anonymous	870,100
Frank and Paula Cullen and Friends	598,529
Sr Vincent Finnerty	648,401
Friends of Mukuru, Western Australia	348,150
Healix Health Services Ltd	440,400
John S. Hoff Fund Greater Milwaukee Foundation	215,600
Fr Seamus Kelly	218,978
Kenya Wines Agencies Ltd	500,000
Prionnsias Killeen and Friends	301,000
Joseph Otieno Siengo	210,000
Sandro Paoletti & Family	384,000
Sisters of Mercy, South Central Province	359,550
Vivo Energy Kenya Limited	250,000
Whistle	502,631
Total Other Donations	5,847,338

Total Other Grouped Donors *	4,785,602
Total Donations In-kind	11,212,651
Total Income for Operations	78,599,167

Capital Funds Contributions

Calary Church (Co. Wicklow)	328,750
Cheshire Disability Services Kenya	393,700
John and Patsy Coughlan	397,595
Cullen Communications	657,500
Frank and Paula Cullen and Friends	675,163
Sr Ann Doherty and Friends	75,125
Focolare Teens for Unity	167,185
The Kenyan Child Foundation	23,917,827
Salvatore and Carmela Lobue	1,243,085
Manos Unidas (Spain)	5,660,909
Mukuru Project Liverpool	1,962,759
Embassy of Slovak Republic	545,229
Oakville Rotary Club (Canada)	365,400
Donnie O'Shea	27,800
Sisters of Mercy Solidarity Fund	63,305
Total Capital Funds Contributions	36,581,331

	Kshs
Donations In-kind Capital Items	1,921,438
Total funds for Capital Expenditure	38,502,769
GRAND TOTAL	117,101,936

Other Grouped Donors * (>55,000)

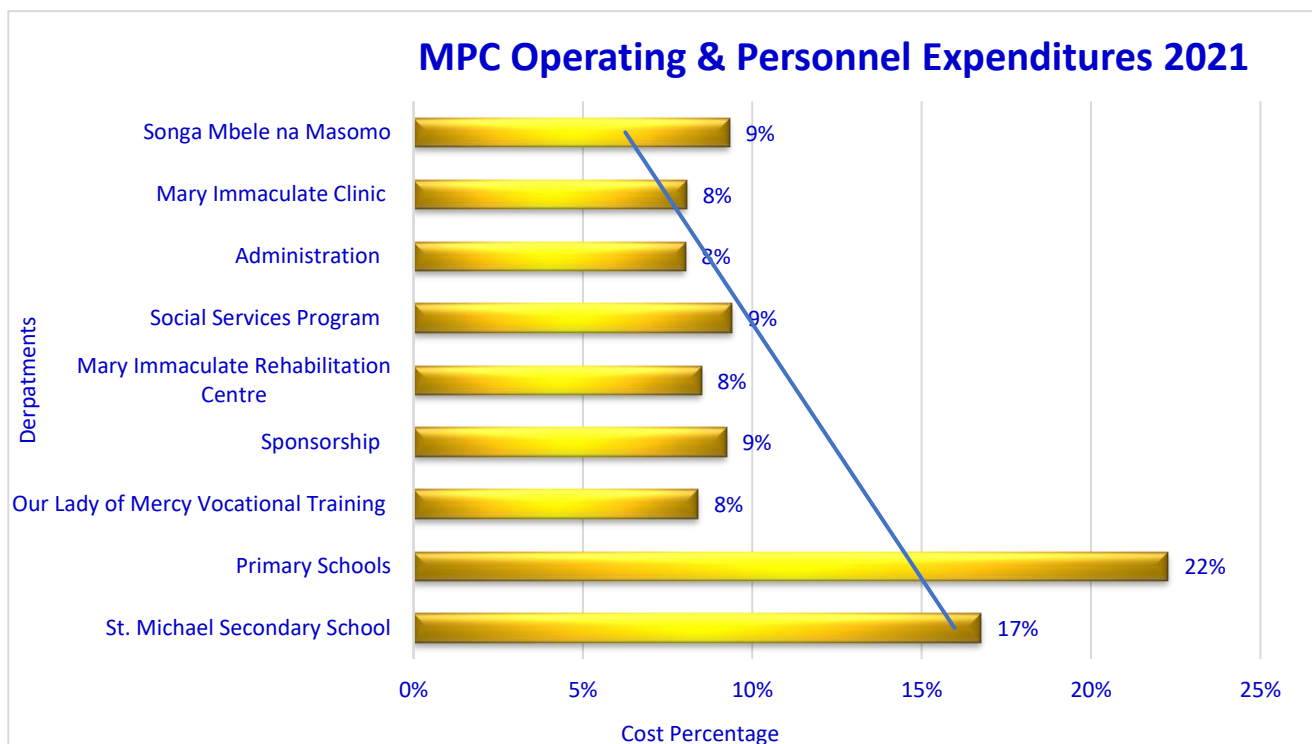
Ambrose Agbeko	140,000
Gurkirit Birdi	59,955
Margaret and Michael Cooper	122,775
Peter Crayford	174,082
Diamond Trust Bank (Catholic Staff)	100,000
Alan Donohoe	63,900
Eco Bank (Head Office Staff)	100,000
Adrian Ennis	192,000
Paul and Jo Ennis	64,000
John Fitzsimons	122,419
Focolare Teens for Unity	128,314
Fr Manuel Gordejuela	130,000
HL-Siftung Joachimstry	147,919
Adrienne Keeley	52,172
Anne Kenna and Family and Friends	124,330
Jerry and Helen Killeen and Friends	199,240
Sinead Killeen and Colleagues	69,760
Dessie Lawlor	94,500
Catherine Lonergan	62,925
Michael Lynne	63,650
Alex Kunyiha Maingi	100,000
Colette Murphy	99,016
MPC Alumni	105,000
Nesselside Builders US	184,185
Stephen Ng'ang'a	60,160
John and Catherine Nolan	85,268
Andrew O' Rorke	50,000
Catherine and Amy O' Sullivan	126,000
Ian Plunkett	100,067
Alec Reid	125,850
Sr Louise Roche and Friends	126,500
Peter and Ger Sreenan	120,935
St. Martin's Church, England	70,201
Mrs Thathi Satwant Kaur	80,000
Stella Urieta	190,200
Other Donors (< 54,000)	950,279
Total Other Grouped Donors	4,785,602

Financial Analysis 2021

Comparing the operational costs between 2020 and 2021, some Departments experienced increases, other's reductions while some others remained steady. The variations were due to the generous donations from partners, supporters and friends.

Department	Increase %	Department	Decreases %
Songa Mbele na Masomo	.07%	MPC Clinic	0.2%
St Michael's Secondary	1.2%	Social and Health Services	9.4%
Primary Schools	8.2%	MPC Rehabilitation Centre	1.0%
Vocational Training Centre	0.3%		
Sponsorship	.05%	Administration	0.4%

As the education institutions were closed for a number of months in 2020 it is understandable to have an increase in the education Departments for the year 2021 when the schools re-opened. The department with the highest increase was the Primary Schools as the cost of the feeding program went high. The Department with the highest decrease was the Social and Health Services as the demands for CoVid19 assistance went down in 2021.





Mukuru Promotion Centre

‘Empowerment Step by Step’

Sponsored by Sisters of Mercy

Inspiring Solidarity

PO Box 17837-00500

Nairobi KENYA

Email: info@mercymukuru.co.ke

www.mercymukuru.co.ke

Tel: +254 733 588 068

Tel: +254 722 505 904