



Mukuru Promotion Centre  
*Empowerment Step By Step*  
Sponsored by Sisters of Mercy  
[www.mercymukuru.co.ke](http://www.mercymukuru.co.ke)

# Newsletter

March 2021

Vol 6, Issue No.3

## Feature This Month:


KCPE Candidates	3
End of Term Exams Analysis	7
Immunization Record	12
The Kenyan Child Foundation New Facility	16
2020 Expenditure Breakdown	25



*The new facility at Songa Mbele na Masomo continues to take shape.*

*Dear Partners, Supporters and Friends,*

March was the month of the Kenya Certificate of Primary Education Examinations. Our schools presented seven hundred and ten candidates. This was an amazing feat as countrywide, thousands of students dropped out during the lockdown. They did not return to school in October and so failed to finish their course and have no proof of their primary education. Eight boys from the Rehabilitation Centre also sat for the exam. This was great to see. Congratulations to all of you who support primary education, who kept the Rehabilitation Centre going and sponsored the boys.



As a certificate of Primary Education is needed to join Secondary School and Artisan courses, it is necessary for those who want to advance academically. It is hard to get an opportunity later as there are very few Centres offering Adult Education. St Michael's Secondary presented one hundred and one candidates for the Kenya Certificate Secondary in Education. They will complete their examination in April. A few pregnant students sat for the examinations. Many pupils returned to school in a poor state as parents had lost jobs.

We are proud to see the Catering, Plumbing, Masonry, Computer Studies, Hairdressing and Beauty, Garment Making, Front Office Management, Art and Craft students continue with their training and practice. The lockdown affected them badly. Eight female students fell pregnant but continue their training. All of the students are worried about when they will qualify and about the poor economic situation. Due to the increasing poverty, social workers and counsellors were busy. We are grateful to those who assisted with material support, food and clothes for those in desperate need. How good it is to see special needs students take their place in growing mushrooms and in training.

We are astonished that there has not been any report of CoVid19 among students, staff and patients. The Clinic continued with health services. We are very grateful for services of health professional Mary Bushel who is volunteering in our Clinic. Her experience and expertise is invaluable.

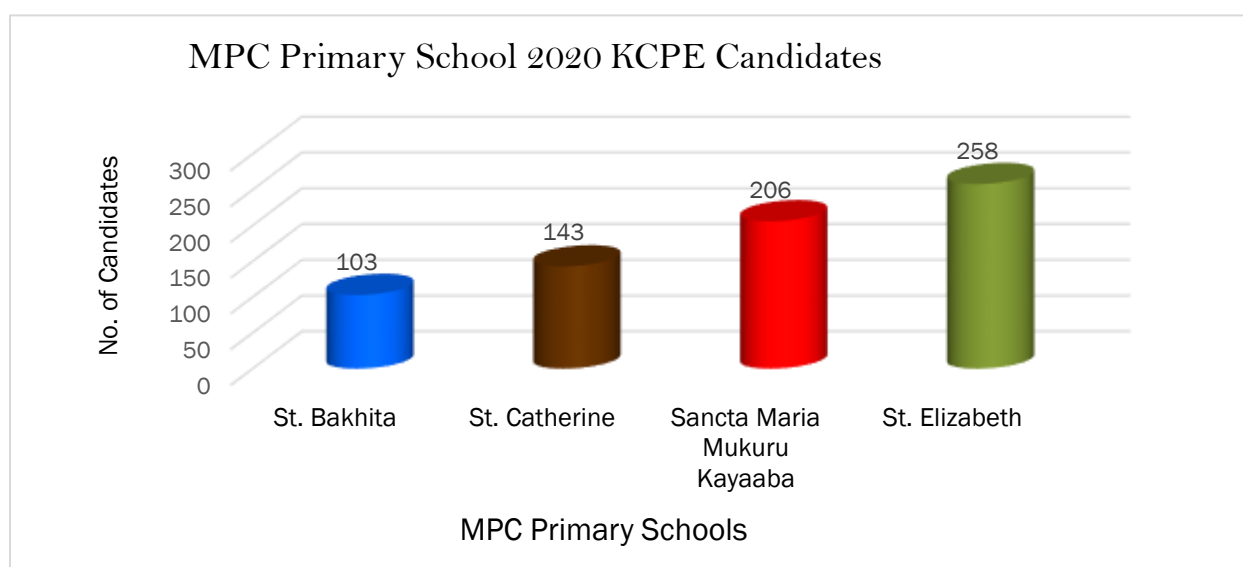
We wait with longing for completion of the building in Songa Mbele na Masomo. Parents keep asking when their children can return to school. Some are attending therapy. Conditions are very challenging for the staff who have very limited office space in a container and who are getting ready for the opening. We appreciate the Sisters of Mercy and our Board Members for their continuous support and for their prayers. Through the help we received from all of you our students and clients have mostly survived these hard times.

With gratitude, prayers and best wishes.

Sr Mary Killeen  
*Director*

## Education

The second term of the 2020 school year wound up with various activities that took place. Notably, March was the preparation period for national examinations and end of term assessments for the Primary Schools. There was also continuous assessment of Grade 4 students. Students who were not undertaking the national examinations completed their examinations successfully and have gone on Break and will resume in May. The 2020 K.C.P.E examination timetable had to be revised due to CoVid19 pandemic. With the school calendar's resumption in 2021, candidates were given time to prepare for their final exams before sitting them at the end of the month. The KCPE number of candidates totaled 710.



The Primary Schools had mini prize giving days where pupils were awarded in positions of First, Second and Third:

1. Best class academic performances
2. Academic performance for the Most Improved boys/girls in each class
3. Student Council Responsibilities
4. Personal Grooming for the best boy/girl in each stream

Through the generosity of private organizations and individuals we received a number of donations for the primary schools. The donations ranged from food items, equipment, uniforms and stationery items for the schools. Just in time for school holiday break, Pravin, donated sweets for the pupils.



*Distribution of sweets at Mukuru Primary School and St. Elizabeth Primary School*



Sr Anne Doherty and Friends donated 2 Desktop computers to St Catherine's Primary School.



Sr Mary Killeen and Friends donated 2 Laser printers to Mukuru Primary School.



The Makadara Sub-county officials visited St. Elizabeth Primary school to assist with the on-going deworming program at the Schools. The School was also visited by Kenya Broadcasting Cooperation (KBC) personnel who interviewed one of the teachers living with a disability.

## St Michael's Secondary School

March had unconventional processes with the mixture of some Forms being in the middle of the year and others being at the end of the academic year. Form One, Two and Three sat the end of term examinations while the Form Fours sat the national examinations. St Michael's had 101 Form Four students who finally managed to sit the KCSE exams. In between the breaks the students enjoyed the Cultural Day where the school celebrated an array of diversity.

St Michael's Secondary School Enrolments 2021			
Class	Girls	Boys	Total
From 1	35	32	67
From 2	30	51	81
Form 3	59	71	130
Form 4	37	64	101
<b>Total</b>	<b>161</b>	<b>218</b>	<b>379</b>



*Students, parents / guardians enjoying the Cultural Day*



*Judges make notes on the performances.*



*The officials conduct the KCSE Examinations rehearals with the Four Form Students*

Meetings were also held with the PTA (Parent and Teachers Association) members who attended to talk with the candidates and had lunch together after the rehearsals.

Often during the examination students do experience a higher level of anxiety and the social workers and counsellors were able to assist the Form Four students especially to prepare as best as possible for the unusual academic year that has spanned for 18 months. Given the uniqueness of this particular academic year the teaching staff also met with counsellors from Amani Counselling Centre who provided sessions on the effects of CoVid19 and its impact both personally and professionally.



*Teachers having a session with the counsellors.*

As one academic year was concluding the other year was in the middle. Planning preparations for the new term were undertaken with staff, new parents and new students. The new academic year will commence in May.

The End of Term Examinations for the Form One, Two and Three students is a mixed bag. There needs to be much improvement in some subjects and year groups. Although the students had to contend with a disruptive year, the school did manage to provide extra support to those students who attended the 'pandemic' timetable in September and October 2020. The challenge is there for all staff to help the students perform better. We hope that when students return we will achieve greater improvement.



## Form One, Two and Three End of Term Examination Analysis – Term 2, 2020

	English	Kiswahili	Maths	Biology	Physics	Chemistry	History	Geography	CRE	Agriculture	Business Studies	Computer Studies	Mean Score	Mean Grade
<b>Form One</b>														
North	8.21	5.38	3.71	4.91	4.76	8.68	4.74	5.68	7.85	5.88	5.32	5.29	5.87	C
South	8.91	6.29	2.09	4.26	4.63	7.46	5.60	5.46	6.54	5.09	1.91	4.89	5.26	C
<b>Average</b>	<b>8.56</b>	<b>5.83</b>	<b>2.90</b>	<b>4.58</b>	<b>4.70</b>	<b>8.07</b>	<b>5.17</b>	<b>5.57</b>	<b>7.20</b>	<b>5.48</b>	<b>3.62</b>	<b>5.09</b>	<b>5.56</b>	<b>C</b>

	English	Kiswahili	Maths	Biology	Physics	Chemistry	History	Geography	CRE	Agriculture	Business Studies	Computer Studies	Mean Score	Mean Grade
<b>Form Two</b>														
North	7.23	3.18	1.72	3.42	3.03	2.87	5.68	6.49	5.10	4.54	6.38	3.21	4.40	D+
South	5.82	3.14	1.41	5.08	2.70	2.43	5.81	5.61	7.73	4.60	6.59	3.59	4.54	C-
<b>Average</b>	<b>6.52</b>	<b>3.16</b>	<b>1.56</b>	<b>4.25</b>	<b>2.86</b>	<b>2.65</b>	<b>5.75</b>	<b>6.05</b>	<b>6.42</b>	<b>4.57</b>	<b>6.49</b>	<b>3.40</b>	<b>4.47</b>	<b>D+</b>

	English	Kiswahili	Maths	Biology	Physics	Chemistry	History	Geography	CRE	Agriculture	Business Studies	Computer Studies	Mean Score	Mean Grade
<b>Form Three</b>														
North	3.17	4.56	2.53	3.05	2.62	1.85	6.87	5.50	6.00	4.63	3.06	5.73	4.13	D+
South	3.79	4.55	1.76	5.41	2.64	1.50	7.46	5.44	5.85	2.43	3.43	5.93	4.18	D+
East	3.10	4.95	2.21	3.44	2.68	2.05	6.76		5.14	5.75	5.08	3.44	4.05	D+
<b>Average</b>	<b>3.35</b>	<b>4.69</b>	<b>2.17</b>	<b>3.97</b>	<b>2.65</b>	<b>1.80</b>	<b>7.03</b>	<b>5.47</b>	<b>5.67</b>	<b>4.27</b>	<b>3.85</b>	<b>5.04</b>	<b>4.12</b>	<b>D+</b>

## Our Lady of Mercy Vocational Training Centre

The Catering practicals was a standout for March with each student required to produce a two-course meal. Most of the learners were able to dress appropriately, carry out the preparation tasks, weigh the ingredients accurately for the two-course meal. Most learners are now mastering the art of clearing while working in the kitchen and at the same time maintain good kitchen hygiene. There has been improvement in the use of the kitchen hutch. The Food Service element saw improvements such as clean restaurant procedures, polish cutlery, clean crockery, lay covers as per the set menu, design menu card, interpersonal skills, plate service and crumbing down procedures. Some of the learners had a challenge on serving the coffee but there is positive progress after rigorous practices.



*Catering students prepare chapatis for lunch*



*Mary prepares to lay covers for her three guests*

The Front Office class attendance was commendable with no absenteeism. They have three topics from the syllabus remaining: Business transaction in Office Procedures, Fabrics and Interior Decoration in Laundry and Housekeeping. The students completed their end term exams, and all performed extremely well. Communication Skills is a hard nut to crack for some but there is a notable improvement among the weaker ones. Almost all of them have achieved a high level of office etiquette, welcoming guests, competence in receiving calls, transfer and holding telephone calls.

The Housekeeping class has been in the forefront in providing a clean and safe environment for all. The students have improved on speed and have mastered the laid down cleaning procedures very well. The class has also been taught how to observe personal hygiene i.e., body hygiene, environmental hygiene and job hygiene and how to use clean solutions materials. The Dressmaking students made the uniforms for the housekeeping class.



*Housekeeping practicals in progress*





The Art class has four special needs students. All of them have intellectual disabilities with two of them suffering from mild Autism. One student has a speech difficulty and people find it difficult to understand what he says. Each student has been fortunate to enjoy the services of Kananu, a Clinical Psychology student from United States International University (USIU). She has actively engaged them and conducted home visits to gather developmental history from their parents. She observed them in the classroom to see the work they do, how they interact with one another, and set up a merit stars chart for good behaviour. Her work has given us an insight on how to use repetition and positive reinforcement when teaching new skills to them. Some of the special needs students enjoy being praised, being rewarded in front of the others. We have also realized that teachers need to have patience and repeat information in order to make maximum impact on these students.



*Special Needs Students with Kananu*



*Home visit. A mother who became bedridden after a head and neck trauma caused by a car crash in Nairobi).*

Overall, many students are progressing well in their respective courses. The e-waste project started in earnest with the dismantling of the Waste Electronic and Electrical Equipment (WEEE). The Dressmaking students successfully produced over 4,000 face masks for the St. Catherine's pupils despite their busy schedule. The January-May Computer students successfully completed their course work and exams.

## Social Services

March was quieter than previous months as the National Examination period required only the candidates to attend the various schools. There were 710 primary candidates and 101 secondary students who sat for the KCPE and KCSE exams. There were the usual meetings with other agencies, parents and staff. The focus on the meetings held were on the progress of the social work, child protection and safeguarding office and case management. The social workers continued with the follow ups on teenager mothers, birth certificates, sponsorship interviews and networked with the local chiefs to get more young people into vocational training. The summary of activities is listed below.

### Summary of March Activities

NO	Case type / Activities	Education						Health	Welfare		Total
		St Bakhita	Sancta Maria Kayaaba	St Elizabeth	St Catherine	St Michael's Secondary	Vocational Training Centre SKILLS	MPC Clinic	Songa Mbele na Masomo	MPC Rehabilitation Centre	
1	Abuse Cases	0	0	2	0	0	0	0	0	0	2
2	Amaranth Clients	0	0	0	78	0	0	0	0	0	78
3	Behavior and Discipline Cases	1	0	0	0	0	0	0	0	0	1
4	Counseling and Guidance sessions	2	10	13	8	12	6	0	3	0	54
5	CoVid19 Hygiene Material Resources	0	0	0	0	0	0	0	25	0	25
6	Donation Issued	0	0	0	0	0	0	0	0	0	0
7	Donation Received	0	0	0	9	0	0	0	0	13	22
8	Fire and Floods Disaster assistance	0	0	0	0	0	0	0	0	0	0
9	Food Distribution	0	0	0	0	0	0	0	0	0	0
10	Home Visits	10	11	6	1	3	2	2	11	0	46
11	Hospital Visits	0	2	0	0	0	0	5	1	16	24
12	Malnourished Babies	0	0	0	15	0	0	0	0	0	15
13	Medical Cases	10	26	4	24	18	5	0	16	11	114
14	Meetings and Trainings	0	0	1	0	2	0	2	4	0	9
15	Mentorship Sessions	0	1	0	0	0	2	0	1	0	4
16	Mobilization of Resources	0	0	0	0	0	0	0	0	0	0
17	Needy Families Support (Community)	8	1	1	41	0	0	0	0	0	51
18	Needy Primary and Secondary Students	0	0	0	0	1	0	0	0	0	1
19	Networking	0	2	1	0	1	0	1	0	0	5
20	New Admissions to MPC Institutions	0	0	0	0	0	0	0	3	3	6
21	New Teenage Pregnancies cases	0	0	0	0	0	0	0	0	0	0
22	Nutritional Support	9	2	1	227	1	0	0	0	0	240
23	Pregnancy Support Packages	4	0	0	0	0	0	0	0	0	4
24	Provision of Sanitary Towels	0	0	10	0	4	0	0	0	0	14
25	Referrals	0	4	0	10	0	0	0	0	0	14
26	Safeguarding Follow Ups	0	0	0	0	0	0	0	0	0	0
27	School Absenteeism/Truancy	3	2	15	0	13	8	0	46	0	87
28	Schools Profiles	0	0	0	0	17	0	0	0	0	17
29	School Visits	0	0	0	0	0	0	0	6	0	6
30	Songa Mbele Therapy Sessions	3	0	0	0	0	0	0	0	0	3
31	Sponsorship Follow-ups	0	0	0	0	0	9	0	0	0	9
32	Uniform Aid	0	0	5	0	0	0	0	0	0	5
<b>Totals</b>		<b>50</b>	<b>61</b>	<b>59</b>	<b>413</b>	<b>72</b>	<b>32</b>	<b>10</b>	<b>116</b>	<b>43</b>	<b>856</b>



*Home visit – needy Class 4 pupil from Mukuru.*



*MPC Rehab Centre Class 5 candidates*



*A needs Assessment Visit*



*Felix attends his dental appointment at St Mary's.*

## Health Services

Patient numbers continued to rise during the month which is a testament to the confidence Mukuru people have in the services at the Clinic. We are seeing a record number of inoculations for children's vaccines. In February there were 243 immunizations and in March we recorded 413 with females accounting for 58% and males 42%. The Ministry of Health are delighted with the number of children that the Clinic is achieving. Our staff received their first dose of the AstraZeneca vaccine from the Mater Misericordiae Hospital and the second does will be carried out in June.

During the month the Continuous Medical Education (CME) program, a new initiative to help provide the best medical practices whereby medics share knowledge with our staff. This is a boost to our in-house procedures, knowledge and quality of service.

The Clinic received some medical equipment and medications from Mr Hiten and Mr Patel that will go along way to helping further with the services. We are very grateful for their generosity.

### Most Common Treated Ailments in March

Diseases	Under 5	Under 13	Over 13	Male	Female	No. of Cases
Acute Upper Respiratory Tract Infections	55	158	421	325	309	634
Acute Lower Respiratory Tract Infections	13	41	55	51	58	109
Urinary Tract Infections	0	23	154	48	129	177
Immunization	376	30	7	175	238	413
Gastritis	11	57	148	114	102	216
Febrile Illness (Unspecified)	3	115	141	142	117	259
Fungal Infections (Other)	0	8	53	28	33	61
Candidiasis	0	0	50	34	16	50
Diarrhoea (unspecified)	15	43	96	67	87	154
Helminthiasis	0	0	62	38	24	62
Myalgia	0	19	95	58	56	114
Diabetes and hypertension	0	0	109	67	42	109
Pregnancy	0	0	88	0	88	88
Tuberculosis	0	0	9	7	2	9
Wounds	2	14	93	58	51	109
Other Diseases	18	34	634	436	250	686
<b>Total</b>				1,648	1,602	3,250

### Patients Treated in March 2021

Category	Gender	Under 5	6 -17 Years	18- 35 Years	Above 36 Years	Total
New Cases	Male	180	149	166	90	585
	Female	100	120	300	134	654
		280	269	466	224	1,239
Revisits	Male	258	180	343	236	1,017
	Female	203	163	328	300	994
		461	343	671	536	2,011
<b>Total</b>						<b>3,250</b>
<i>Percentage</i>	<i>Male</i>	<i>59.1</i>	<i>53.7</i>	<i>44.8</i>	<i>42.9</i>	<i>49.3</i>
	<i>Female</i>	<i>40.9</i>	<i>46.3</i>	<i>55.2</i>	<i>57.1</i>	<i>50.7</i>

### The Laboratory Tests For March

Type	Under 5	Under 13	Over 13	Male	Female	Total
Urinalysis	5	19	181	85	120	205
Stool Ova / Cyst	17	39	117	107	66	173
Malaria	31	9	54	52	42	94
Full Haemogram	40	24	101	95	70	165
HighVaginal Swabs	0	0	24	0	24	24
Helicobacter Pylori	0	2	22	9	15	24
Antenatal Profile Tests	0	0	27	10	17	27
Random Blood Sugar	0	1	61	31	31	62
Pregnancy Tests	0	0	10	0	10	10
Haemoglobin Levels	2	2	15	7	12	19
Salmonella Antigen	0	1	4	1	4	5
Brucella Test	0	0	4	1	3	4
Rheumatoid Factor	0	0	8	6	2	8
UEC's	0	1	2	1	2	3
Calcium	1	0	2	1	2	3
Liver Functions	0	0	2	2	0	2
Hepatitis B	0	0	4	1	3	4
VDRL	0	0	7	4	3	7
Fasting Sugar	0	0	2	2	0	2
Uric Acid	0	0	2	0	2	2
Blood Group	0	0	1	1	0	1
<b>Total</b>	<b>96</b>	<b>98</b>	<b>650</b>	<b>416</b>	<b>428</b>	<b>844</b>

Average 36 tests per day

## Welfare Services

### Songa Mbele na Masomo

Planned activities for Day Care, Special Coaching and Coaching Units along with the Therapy sessions were carried out as per our program and we even managed the unplanned ones.

A total 48 clients received therapy during the month: 17 from special coaching unit, 21 day care unit and 10 day care. Daily Living Activities (DLAs) such as feeding, and toilet training improved much during the month and 3 children graduated from using diapers and are well. The speech training activities for those with delayed speech were conducted three days a week to stimulate and strengthen the jaws for speech preparation. A number of children from the coaching unit came to the Centre hungry due to lack of food at home. Staff in this unit kept on sensitizing learners on safety and precautions to take for Covid 19 prevention and masks were provided on demand.

One of the cases that the Centre has been following is a young girl, Sheila, who has cerebral palsy and was rescued. She had fractured her femur. The social worker and the special needs teacher visited her at Kenyatta National Hospital. The girl had surgery to correct the femur, but it ruptured overnight due to her uncontrolled involuntary movements (dystonia). Doctors are doing all they can to save the girl from pain and have scheduled a second surgery. Sheila will require quite a lot of therapy when she is discharged from the hospital.

The donations received during the month included: loaves of bread and assorted vegetables, 2 bales of maize flour, 2.5 kg rice and 1.5kg beans, hygiene materials, a bag of assorted dresses, baby cot and a baby walker. We are very grateful for the donations as they do make a difference to the Centre and needy families.

The Centre was visited by Water Resource Authority as officials were doing the marking of the riparian land of Ngong river. The Marking peg was pitched to show the original river course which shows that the river has been moved towards the Centre to get space for more slums to be built on the riverbank.



*A cerebral palsy girl writing*



*Pupils coloring pictures*



*Autistic boy matching numbers.*





*Therapy sessions taking place*



*13yr old girl with dyslexia learns to write her name.*



Speech therapy session - blowing bubbles to help children regulate the flow of saliva in their mouth.



Sheila was admitted at Kenyatta National Hospital and is recovering well. She has resumed therapy – feeding tube is still attached.



*The ruptured femur*



*State of the girl after first surgery*

## The Kenyan Child Foundation New Facility

The new facility is progressing well. The facility is nearing completion with the superstructure completed and the many external finishings commencing after the colour scheme was decided upon. The terrazzo floors, the railings along the corridors, ground leveling for the carpark area and drainage have all commenced.



*Corridor terrazzo being polished*



*Under coat paint inside the classrooms.*



*Leveling of the parking area*





*Front view of the facility*



*Terrace Rooftop – water tanks in place*



*Footpath Preparations*

## MPC Rehabilitation Centre

The energy and enthusiasm were high in March as many of the boys were reconnected with their families. It was a pleasure to see the connections with the families because often they consider their 'son' lost. It is always a big shock to families to learn that their sons have been in good hands. Six boys were reintegrated with their families, four of whom sat their KCPE and the other two went back with their families to continue their education near their homes. There were four new admissions during the month.

Year One students at the Centre were introduced to interpersonal communication skills and simple Maths. The boys can now tell the time and narrate stories in English and Kiswahili. Four other boys in Grade Three were registered at St Catherine Primary School and sat for the CBC KNEC Exam. They were tested in practical tasks involving drawing, colouring, identifying sources of water, hand washing steps, filtering and boiling of drinking water. They also made 3-dimensional models of the sources of water colored and labeled.



The midterm exams indicated great improvement by all the students. The results in Year One ranged from 409 to 230 out of 500. In Year Two the range was a high of 329 to a low at 129.



*Examinations in progress*

The students make good use of the library in preparation for the exams. The students continued to use the ProFuturo tablets for their lessons and for the first time to complete their exams which helps reduce the cost of buying printing papers. The carpentry students were very busy with their projects as they await NITA examinations scheduled for April 2021. One student is preparing for Grade II while four of them will take the Grade III exams. The other 7 students who joined in 2021 did an internal exam.



Apart from the above academic activities the students were involved in the construction of a rabbit hutch. They also leveled the ground and located it at its present position.

The catechism, drawing, beadwork, painting and decorating classes were well attended.



*The boys were also involved in environmental awareness through clearing the bushes around the Centre as well as the playground by slashing.*



*Rugby practice*

Gymnastics and rugby are held twice a week. We encourage the students to engage in such activities so as to keep them physically fit and learn how to socialize as they play together.

The students also participated in singing and reciting the rosary which are conducted by the house parents in the evenings. The majority of the boys have shown positive attitudes in trying to improve their lives.



We had 8 students who sat for KCPE examinations. The students have been working extremely hard and we are hopeful that they will do well. The results should be available in April. Five of them went to St Catherine's: One went to SSD in town and the other two went to St Peter and Paul, Embu.



*Emoit and John*



*Henry {L} with classmates*



*John and Henry*

Due to the three months suspension of the academic year the decision was made to send the students home to their parents / guardians to avoid keeping them idle at the Centre.



*Reunion – mother and son*



*Reunion – father and son*



*Group counseling session*

Sr Theresia, Faith Namuma, Yoda Orwa and Dan Shishie volunteered in March and assisted in different areas. The volunteers were from Mount Kenya, USIU and Technical universities on placements for community development and counselling. They conducted informative health talks included hygiene, HIV/AIDS, drug and substance abuse among others.



The closing ceremony was held late March. The teachers and other staff gave encouraging words to the students as they prepared to return to their families. There were several gifts for the students who achieved well in different categories: most improved, academic achievement, sports, conduct and behaviour.



*Presentations*

We joined the world in celebrating St Patrick's Day on the 17<sup>th</sup> of March. Our donors from Ireland made sure that we were not left out by organizing a special meal. Every student was involved in preparing the day in true style. We used leaves and branches to decorate the dining hall.



*Touch of the Green*



*The Feast!*



*The Dining Hall*

We continued to receive generous donations from well-wishers. Some of these donations included:

- Action in Focus; *avocado, broccoli, passion fruit, baby spinach, french beans, carrots among other veggies.*
- Team Pankaj: *bread, broccoli, baby spinach, cabbages, sweet potatoes, pumpkin, onions and peas.*
- Friends of Rehab: *bread, juice and assorted clothes*
- St. Margaret's Small Christian Community: *cabbages, onions, potatoes, carrots, maize flour, cooking oil and chicken.*
- U.S.I.U: *beans, green grams, lentils, oil, rice, sugar, maize flour and stationery.*
- Devkan Enterprises Limited: *holsum bread at least twice a week.*
- Sisters of Mercy: *rice, maize flour, cooking oil, biscuits and soda.*
- Our Lady Queen of Peace Parish South B: *clothes, shoes and travelling bag.*
- British Airways Crew members: *Assorted shoes*
- Mary Bushell: *biscuits and sweets*
- Madam Sonia: *milk, bread, sugar*
- Paula Cullen: *stationery items.*



*Donation of veggies from Action in Focus*

## Sponsorship

It may seem strange, but March was the end of term two (2020 academic year) for the majority of the students. As for Form 4 students and Grades 8 and 4 students it was their third term (2020 academic year) marking the conclusion and sitting for their National examinations. The rest of the students went on the April holidays and are expected to resume on 10<sup>th</sup> May 2021.

Collection of school report forms took place at St. Catherine's Primary and St. Michael's Secondary School while students from other schools drop theirs into the Sponsorship Office. The report forms will be shared with the students' sponsors to keep them up to-date on the students' academic performance progress. The students had a chance to write their thank you letters showing their appreciation for the continued support they have received from their donors.

The sponsored students participated in writing appreciation letters to their sponsors.



*Students writing appreciation letters.*

The Sensitization Day was held during the month to keep students motivated with guest speakers providing some inspiration regarding life skills. The event proves effective and crucial for the students who receive guidance on their day to day living. This is different from the classwork learning. We had one of the guest speakers talk to them on time management, while the second speaker gave a talk on self-identity. The interactive sessions had students happily participating.



*Sensitization Day*

Students received gifts donated by Naivas Supermarket on the day. Some of these donations will go a long way in complementing what had already been put in place as safety measures to curb the spread of CoVid19 among the students. We greatly appreciate the donations on behalf of all the beneficiaries.



*The Catering students served refreshments*

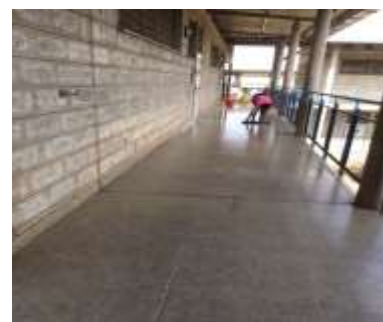


*Gifts from Naivas Supermarket*



*Students received hand sanitizers.*

At the end of term all sponsored students participate with community service at MPC. The sponsored students were allocated duties in various MPC institutions. These activities provide the students with a chance to conduct cleaning duties, dusting surfaces as well as filling in various departments enhancing their teamwork skills. It is also a way of showing gratitude for the platform provided to them by Mukuru Promotion Centre sponsorship program.



*Community Service in Action*

There is an ongoing process of preparing the donors' reports now that the term has just ended. The selection of Class 8 students for possible sponsorship in July 2021 for secondary school was completed. One of the criteria will depend on the final marks from the KCPE that will determine their admission to various secondary schools. The term ended well, and we are grateful to all our sponsors for their generous support towards keeping the destitute children in school.



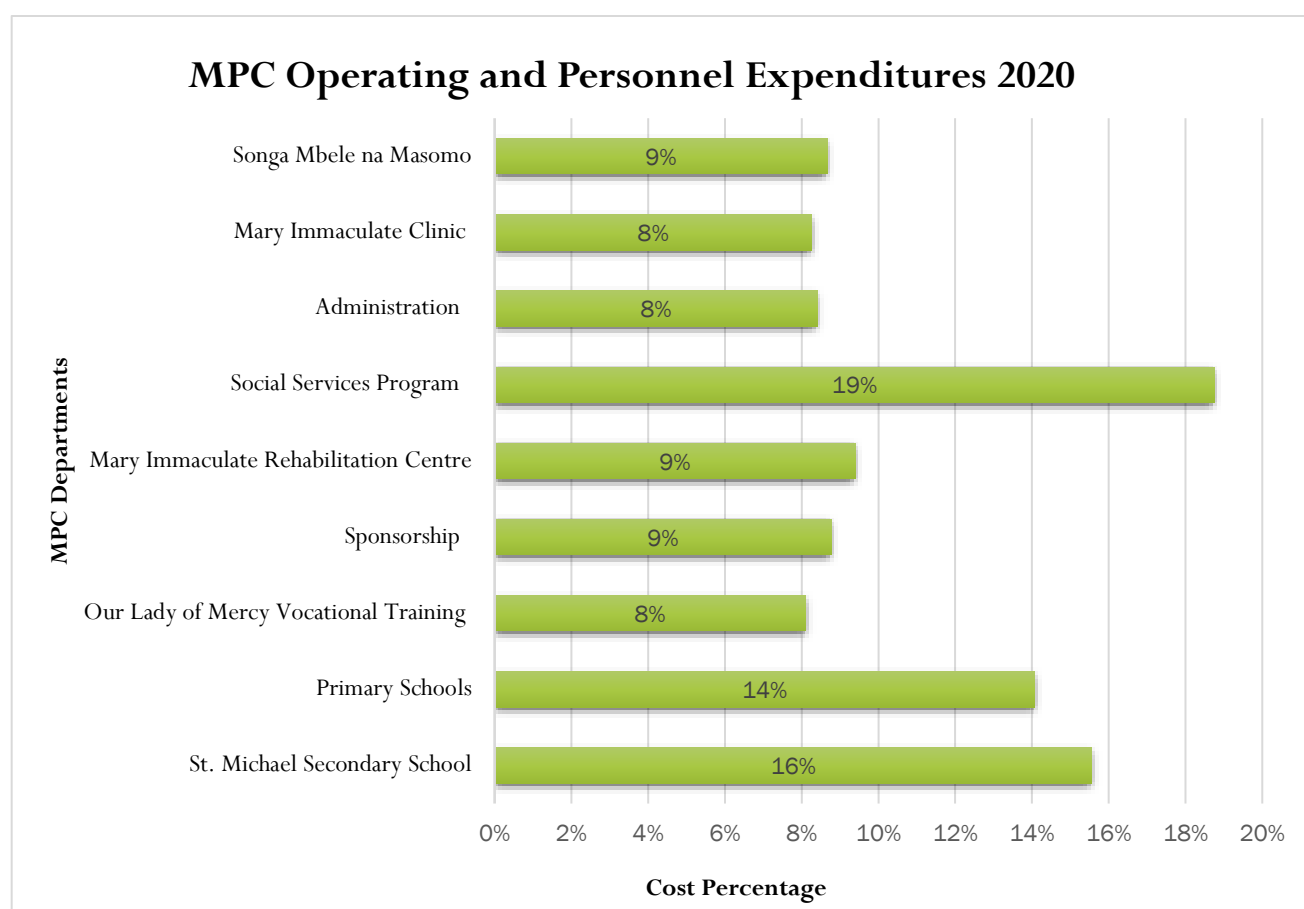
## Year 2020 Expenditures

MPC's 2020 Audit Accounts were completed during the month. Comparing the operational costs from 2019 and 2020, some departments experienced increases and others, reductions. Much of the variations were CoVid19 induced and generous donations from partners, supporters and friends. There were increases with the Administration up 3.5%, Social and Health Services up by 12% and Sponsorship by 2%.

The departments with reductions were:

- MPC Clinic down by 1%, MPC Rehabilitation Centre by 2%, Vocational Training Skills by 1%,
- Primary Schools by 5%, Songa Mbele by 2% and St Michael's Secondary 1%.

As the education institutions were closed for a number of months it is understandable to have reductions in these departments. The department with the highest increase was the Social and Health Services as they responded to the enormous demand for services during the pandemic.



## Announcements

As the MPC departments were conducting the many activities during the month there were other works keeping MPC on track.

- The Internal and External Audits which are conducted annually.
- Various trips to the airport to collect vegetable donations.
- Proposals to a number of agencies.
- Horizont3000 trainings on Community of Practice (COP).

March was a lively month. It is hoped that with your continued support MPC can keep on keeping on.



Mukuru Promotion Centre

*Empowerment Step by Step*

Sponsored by Sisters of Mercy

**Email: [info@mercymukuru.co.ke](mailto:info@mercymukuru.co.ke)**

**Director: [maryk@mercymukuru.co.ke](mailto:maryk@mercymukuru.co.ke)**

Website: [www.mercymukuru.co.ke](http://www.mercymukuru.co.ke)

Tel: +254 (0) 722 505 904      Tel: +254 (0) 733 588 068