



Mukuru Promotion Centre

*Empowerment Step by Step*

Sponsored by Sisters of Mercy

[www.mercymukuru.co.ke](http://www.mercymukuru.co.ke)



*Hope Filled*

*Signs*



**Annual Report 2020**



## Contents

Acknowledgements .....	2
Registered Trustees Sisters of Mercy.....	3
Board Chairman .....	4
Strategic Direction 2016 - 2020 .....	5
<b>Mission Statement</b> .....	5
<b>Vision Statement</b> .....	5
<b>Core Values</b> .....	5
Director .....	6
Coronavirus Pandemic 2020.....	7
MPC Organisational Structure 2020 .....	10
Human Resources .....	11
Building and Infrastructure Developments .....	13
Songa Mbele na Masomo New Facility.....	13
Our Lady of Mercy Vocational Training Centre.....	15
Education .....	16
Primary Schools.....	16
St Michael's Secondary School.....	19
Our Lady of Mercy Vocational Training Centre.....	23
Social and Health Services .....	25
Social Services.....	25
Child Protection and Safeguarding Office .....	27
MPC Clinic .....	28
Welfare Services .....	30
Songa Mbele na Masomo .....	30
MPC Rehabilitation Centre.....	32
Sponsorship Program .....	34
Financial Analysis 2020 .....	36
Statement of Comprehensive Income .....	36
Statement of Financial Position.....	37
Major Grants and Contributors.....	38
Financial Analysis .....	42

### Acknowledgements

Editor: Sr Kathy Kettle RSM

Proof-reader: Sr Patricia Moran RSM

Photographs and Contributions: Winnie Ogutu and Heads of Departments

Mukuru Promotion Centre Annual Report 2020

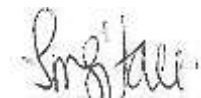
## Registered Trustees Sisters of Mercy

I am grateful to the Lord that in spite of all the challenges that 2020 brought, Mukuru Promotion Centre continued to offer services to the very poor of Mukuru. MPC is a beacon of hope for the people of Mukuru Informal Settlement whose livelihoods depend on the support and services offered.

MPC is an important project for the Sisters of Mercy whose charism is to serve the poor people of God wherever they are found. This charism becomes the power behind everything that happens in MPC. For this, Sisters of Mercy, rejoice that we can touch so many people's hearts in the different MPC projects. It is my hope that MPC will continue to grow and develop.

I am grateful to the Director, Sr Mary Killeen and her staff for their dedication and commitment and for keeping their enthusiasm alive in spite of all the challenges. I am appreciative to the Board of Management led by Dr Onsando for their tireless effort in offering leadership and guidance to MPC. Above all, I am thankful to you, our donors, in Kenya and abroad for your commitment to serve the people of Mukuru through MPC. I hope that this partnership can continue this year and into the future.

God bless you all.



**Sr. Mary Gitau IBVM**

*Pontifical Commissary, Sisters of Mercy, Kenya.*

## Board Chairman

In 2020 MPC faced appalled Challenges. The CoVid19 Pandemic led to the closure of institutions, industries, and businesses. There was also a locust invasion, the worst in years. The national economy was negatively impacted, as never before. Workers lost their jobs, and the few who still held jobs were earning a half or a third of their salaries. The Mukuru community, whose livelihood largely depends on supplying labour and other services to the surrounding factories, had many of its people rendered jobless and destitute. This led to a number of them relocating upcountry with hope that life will be easier in the rural areas. With children forced to be at home for the year parents faced the challenge of raising children who were hungry, restless and idle.

At MPC, despite the shortage of funds, and with a positive support of donors, we managed to keep the health and rehabilitation services running. Additionally, we managed to provide workers with a “CoVid19 allowance” (a percentage of their monthly salary) despite the closure of their workplaces.

As we look forward to 2021, we wish to remember and thank our partners and donors who have continued their support throughout this difficult period. We thank the Board of Management for its dedication, time and effort in steering MPC through this difficult period. We extend our thanks to the Sisters of Mercy for their unceasing prayers and support. The MPC staff members, led by the Director, Executive Officer and Heads of Departments, have shone through the year, even when they should have given up. Their commitment is indeed an example of the MPC values at work. The National and County Governments also rendered support and input in shoring up our activities. The Mukuru community did not disappoint or tire in its involvement in our activities, which gave us the courage to push on in our mission. To all of them we express our gratitude and thanksgiving.

We pray and hope for a better year in 2021.



**Dr Onsando Osiemo**

*Chairman, Board of Management*

## Strategic Direction 2016 - 2020

The Mukuru Promotion Centre (MPC) over the last five years carried out its strategic plan in collaboration with others to raise the human dignity of the people of Mukuru towards self-sustainable development. Much hard work and many people have contributed positively for MPC to stand where it is today. The efforts made by the Board and the MPC Director, Sr Mary Killeen together with all those who have supported the activities to bring MPC back on track during this period.

The mission of MPC is to aspire to offer holistic and sustainable education, health and empowerment programmes that addresses the basic needs of the most vulnerable groups in the community. Over the last five years to accomplish this, the Board directed that bold initiatives be undertaken with the view of producing a distinctive institution that not only achieved the mission but placed the organisation in a better position going forward.

The strategic plan (2016-2020) (SP) highlighted the need to ensure an effective organization, that can sustain the relevant programs through effective financing approaches, and secure long term future for the residents of Mukuru Informal Settlement. Our stakeholders placed their faith in MPC to achieve its mission and goals as we continued to enhance its leadership and integrity in line with the Gospel values as emphasized in the Kenya Constitution through transparency, accountability, and value for money while protecting the resources of MPC for a better tomorrow.

The year 2020, like no other really challenged MPC's resolve, resources and responsibility to its mission in the CoVid19 Pandemic. Inspired by many well-wishers, supporters and partners we concluded the year a little battered and bruised but still 'Hope-Filled' and operational. During the last few months of the year with our Board, Senior Management, Staff and Stakeholders reviewed and assessed the current strategic plan and commenced arrangements towards a new plan for the next five year period. We are grateful to DKA Austria who provided the financial support for the new strategic plan.

### Mission Statement

Aspire, in conjunction with the Mukuru community, to establish and operate holistic and sustainable education, health and empowerment programmes which will address the basic needs of the most vulnerable groups in the community.

### Vision Statement

To empower Mukuru Community to elevate their human dignity towards self-sustainable development.

### Core Values

Integrity    Loving kindness    Commitment    Uphold human dignity.



## Director

The year 2020 commenced as an ordinary year and the different departments continued to provide services to the Mukuru residents. In March, the World Health Organisation (WHO) announced the world-wide pandemic of the Coronavirus (CoVid19) and the Government of Kenya (GOK) closed its borders to overseas travellers that had a detrimental impact on the operations of Mukuru Promotion Centre (MPC) especially with generating income for the different projects within the organisation.

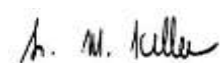
MPC communicated to its partners, many supporters and friends who responded positively by supporting the 'immunity booster parcels' program and emergency grants. This quick action helped thousands of residents from starvation.

The MPC employees tried hard throughout an exceedingly difficult year. The Social and Health Services and Head Office remained open throughout the year. The Education Department experienced the most disruption due to the closure of learning institutions and nebulous directions from the Ministry of Education and Vocational Training regulators. To support employees who had been affected by CoVid19 the MPC Board took the decision to assist them as much as possible through a 'CoVid19 Allowance' which equated to a percentage of their normal salary. The closure of the learning institutions impacted markedly on the collection of school and tuition fees and income of MPC. The education institutions only partially opened in October and November 2020.

In the last quarter of the year enormous efforts were taken to reduce the MPC deficit. The majority of planned activities did not occur and approaches to partners helped to redirect funds to cover the salaries of over 145 employees. Our major partners and donors were very accommodating and understanding in helping MPC to be compassionate to our staff. In 2021, MPC will need to be fully cognizant that many of our partners and donors have also been impacted due to the pandemic and it would be prudent to expect that the promised funding will be reassessed especially after the first six months. The challenge will be to find new donors to provide some funding.

In conclusion, given numerous difficulties that were faced by MPC in 2020 it managed to continue some of the services and programs to thousands of needy families in Mukuru slums. The following report highlights the works and challenges from a departmental perspective. MPC looks forward to 2021 when the new facilities at Songa Mbele na Masomo, Vocational Training block for the disabled youths as well as a Head Office are completed, and more services can be facilitated to the very poor.

Yours sincerely



**Sr Mary Killeen**

*Director*

## Coronavirus Pandemic 2020

Not since the 1918 Spanish flu pandemic has the world experienced such disruption, chaos, illness and death. With little technology and medical expertise, the Spanish flu killed between 20 million and 100 million people worldwide. The HIV/AIDS pandemic in 1981 resulted in 36.7million deaths and is still considered an active pandemic. The World Health Organisation declared the Coronavirus (CoVid19) a pandemic in March 2020. Originating from the Wuhan Province China, the virus is highly contagious compared with other viruses. This highly communicable virus caused countries around the world to close their borders which impacted hugely on economies world-wide. President Kenyatta shut down many institutions and businesses in Kenya starting with the learning institutions on 15<sup>th</sup> March 2020 followed by non-essential businesses and curfews. For the year there were 81,485,124 worldwide confirmed cases and 1,798,154 deaths with 44% of the statistics from the Americas and 32% from Europe. Africa accounted for 2% of confirmed cases however, some argue the figure is low due to lack of testing.

With 17 million pupils/ students attending over 43,000 learning institutions staffed by 860,000 teachers in Kenya, the closure had a domino effect on people's capacity to earn a living. The majority of people in slums do not have secure work, they are casual workers, selling vegetables, washing clothes, or selling simple foods such as boiled eggs or chapatis when possible. There is no welfare system to support them. The subsistence economy in Mukuru slums feeds off the many industries supporting the national economy. Apart from the pandemic Kenya also experienced in 2020 its worst invasion of desert locusts for more than 25 years, which has impacted on its food security as well as trying to cope with devastating floods which led to the displacement of people and businesses.

When the Government ordered the closure of all schools over 60% of MPC staff were affected. The MPC funds from donors support a host of activities in the Primary Schools, Secondary School, Vocational Training Centre, Clinic, Disability Centre and Rehabilitation Centre. These vital activities were placed on hold. However, MPC Clinic and Rehabilitation Centres remained open as they are essential services. The Sub-County Children's Department requested MPC to admit more street boys at the Rehabilitation Centre, but MPC insisted that those new street boys be first tested for CoVid19 before they could be admitted which the Sub County failed to do.

MPC received several emails from people wanting to know how it would manage the crisis. The Government's daily bulletin updates mandated the protocols to be observed: wash your hands, keep social distances to 2 metres, work from home and if sick definitely stay at home. The situation in the slums is unique compared to most developed countries. Mukuru residents do not have the funds to buy water to wash their hands. Most families live in a single 2 or 3 metre room / shanties with between 5-10 persons. The social distancing is not an option for them. The alleys and walkways in slums range between 1 to 3 metres wide. With a population of over 600,000 persons in Mukuru slums contact is unavoidable. The density rate in Kenya is 94 persons per square kilometre, but in the slums, it is more like 83,000 people per square kilometre. (source: <https://www.populationof.net/kenya/>).

MPC endeavoured to respond to the crisis ensuring that the families whose children attended the MPC schools received some support. The first of thousands of food parcels were distributed to families who had not eaten in days. At one place the riot police had to attend and

disperse the crowd with tear gas due to the sheer numbers of people needing food. MPC could do little about the virus and the living conditions but it did provide immunity booster parcels to help the slum dwellers immune system. The immunity booster parcel contained: *kale, oranges, maize, water, amaranth flour, disinfectant, paper towel and soap*. Other donors assisted with other items such as rice, maize meal, bread, wheat flour, cooking fat, soft drink and sugar. Since the announcement of the pandemic and through the generosity of donors, MPC purchased over *10 tonnes of maize, 5 tonnes of beans, 1,150 litres of hand sanitizer, 400 litres of detergent, 60kgs of sugar, 600kgs of amaranth flour, 500 litres of oil, 10,000 face masks, 20,000 gloves and ten gun thermometers*.

The Government requested some schools to be set up as testing centres and St Catherine's Primary was one of the MPC schools that would be utilized if required. Securing the CoVid19 testing kits proved extremely difficult. One donor offered to obtain 1,000 testing kits for MPC but there was no guarantee that they would work. All kits were to be issued from Kenya Medical Supplies Authority (KEMSA). The cost of each kit from one private clinic was 13,000 Ksh (\$130US). The country went into lockdown in April 2020 for 6 weeks which was renewed for a further 6 weeks in May. The borders were finally reopened in August 2020 and curfews eased.

The Government built two boreholes: one at MPC's St Elizabeth's Primary School Lunga Lunga, the other at MPC's Sancta Maria Primary School Kayaba for both the community and the school. The boreholes have the capacity to produce 2,000,000 litres of water per month per borehole for the slum dwellers.

The Daily Nation newspaper reported that over 110 private schools have collapsed due to inadequate funding as a result of school closures. The neighbouring school, at MPC, St Mary's Viwandani is in danger of collapsing. We are extremely grateful to say that the MPC schools have stayed afloat due to the help of Mercy Solidarity Fund in Ireland and DKA Austria.

The National Emergency Response Committee claimed that violence in Kenya has increased by 30% due to the CoVid19 restrictions. There were 5,000 rape survivors and 70% of these cases are girls under the age of 18 years and 5% are male. Our social workers, counsellors and child protection officers worked intensely to support the victims.

The MPC social workers also identified the most disadvantaged vulnerable people in the slums to disseminate blankets, clothing, food hampers, sanitary pads, bedding and other household items. The network system that MPC has in place helps to mobilize the hampers quickly and effectively. The social workers, together with the community health volunteers and community leaders distributed 5,684 food parcels and 1,949 CoVid19 protection items. Another social impact of coronavirus resulted in huge increases in the number of teenage pregnancies. The social workers confirmed that 40 teenagers from MPC schools fell pregnant during the school closure. The Health Ministry released County by County figures accumulating to a staggering 262,679 pregnancies across the 47 Counties in Kenya for the 6-month period, April to September.

All schools were requested by the Ministry of Education to have adequate water supply for handwashing, to disinfect the schools and to have temperature checks and sanitizer, all of which cost money. Some funds were released by the Government for the task but grossly inadequate. Some students went up country when their parents lost their jobs, and some have decided to remain upcountry. All school children and staff have to wear masks. Masks were supplied by the Government to some schools. Concern was raised about the thousands of students who



failed to turn up for school prompting fears of mass dropouts. MPC schools were missing 100 primary school pupils in Grade 4 and 28 in Standard 8 and 4 students in Form 4.

The greed for money hampered efforts to lessen CoVid19 contagion. The call for more convictions to win the war on corruption was made loudly through the media. Through their participation and contribution, the public is now questioning the behaviour of some politicians and looters of public funds who cause the death of Kenyans through taking the resources needed to combat CoVid19. Will there be a culture change, as people challenge political, economic and cultural practices? Throughout the country there were cries of frustration as the looting of public funds continued with no concern for the suffering of many.

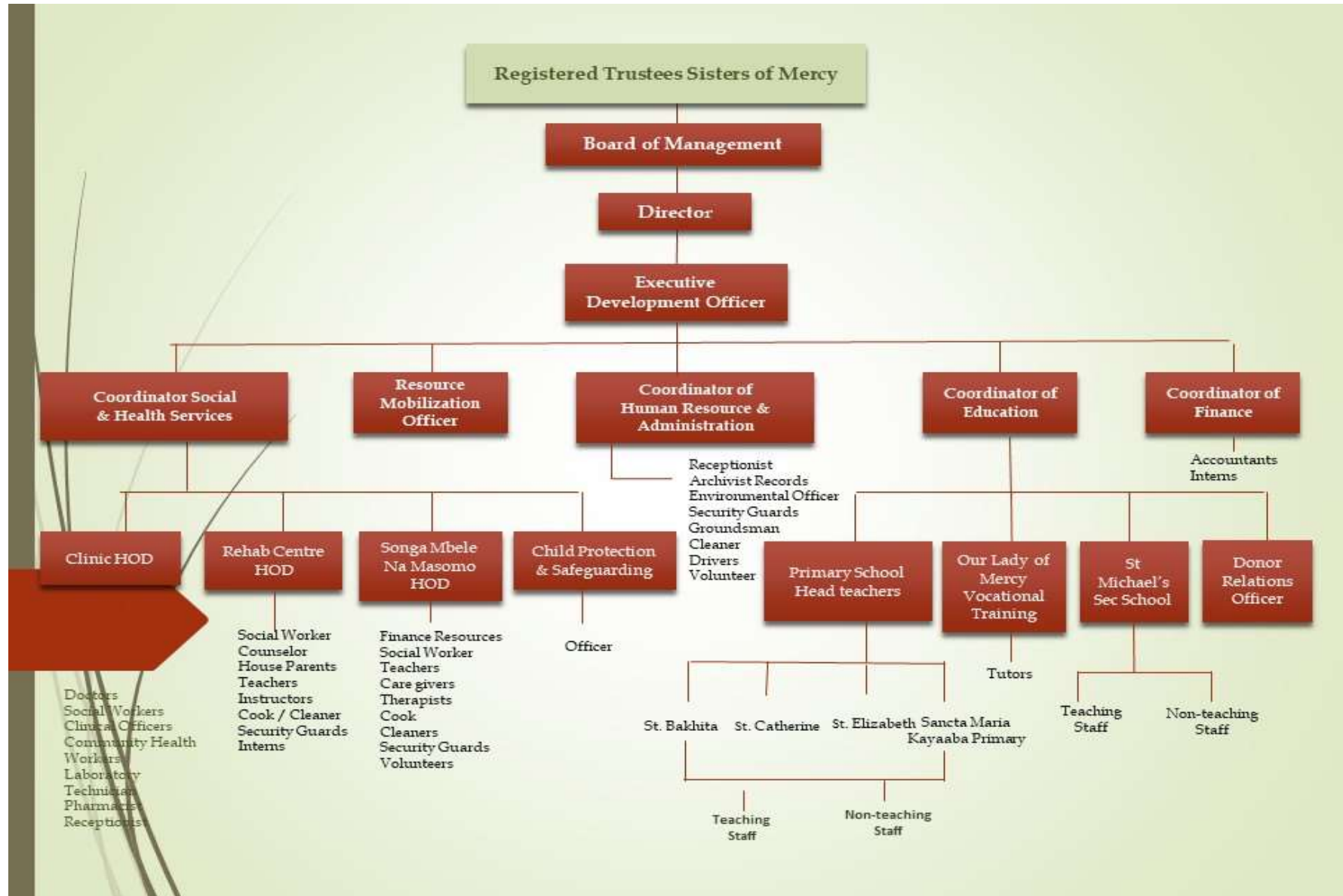
In the 'Springer Nature', publication an article titled **"Slum Health: Arresting COVID-19 and Improving Well-Being in Urban Informal Settlements"** gave a summary of a number of international contributors on how best address the virus in the informal settlements based on previous pandemics such as HIV and epidemics like Ebola. It highlighted 8 points:

- (1) institute informal settlements/slum emergency planning committees in every urban informal settlement,
- (2) apply an immediate moratorium on evictions,
- (3) provide an immediate guarantee of payments to the poor,
- (4) immediately train and deploy community health workers,
- (5) immediately meet Sphere Humanitarian standards for water, sanitation, and hygiene,
- (6) provide immediate food assistance,
- (7) develop and implement a solid waste collection strategy,
- (8) implement immediately a plan for mobility and health care.

MPC managed to address points: 4, 5, 6, 8 because of the generosity of many people around the world.

As at 31<sup>st</sup> December 2020, Kenya had a total number of **96,458** CoVid19 confirmed cases, not to mention the unconfirmed cases, **1,670** deaths and **78,737** recoveries since March 13<sup>th</sup>, 2020 with an overall fatality rate of 1.74% and recovery rate of 81.3%. Men were more prone to the virus than women, rating at 71% compared to 29% for women. The age range of cases was between a 4-month-old baby to an 83-year senior. (Source: Ministry of Health Kenya and WHO).

## MPC Organisational Structure 2020



## Human Resources

Mukuru Promotion Centre is a not-for-profit charitable organization that was established in 1985 in response to an invitation from the parents of the Mukuru Community. Forty years have passed and there have been many developments. There have been countless hope filled signs for thousands of people in Mukuru. From a single primary school in 1985, MPC has seen many developments in the forty years across education, health and welfare services. The CoVid19 pandemic issued multifaceted challenges. During the height of the crisis the MPC Board approved a CoVid19 allowance that enabled the teaching staff to retain 50% of their salary whilst the schools were closed. The administration, support workers and medical employees continued to work throughout the pandemic. Thankfully, no employee contracted or died from the coronavirus.

One of the strategic goals for MPC is to provide training and development programs for our staff. Staff received opportunities throughout the year in Child Protection and Safeguarding, CoVid19, Knowledge Management and other departmental in-house workshops.

### MPC Senior Administrators

**Sr Mary Killeen**  
*Director*

**Sr Kathy Kettle**  
*Executive Development Officer*

**Risper Ogutu**  
*Head of Education*

**Francisca Katua**  
*Head of Social and Health Services*

**Perpetua Moragwa**  
*HOD Finance*

**Luciah Njogu**  
*Program Coordinator – Songa Mbele*

**Peris Thuku**  
*HOD Rehabilitation Centre*

**Daisy Mwaura**  
*HOD Clinic*

**Eric Samia**  
*Human Resources Officer*

**Jackie Kiio**  
*HOD Vocational Training Centre*

**Stellah Mathe**  
*Sponsorship Program Officer*

**Salome Masha**  
*Child Protection Office*

### Mukuru Promotion Centre 2020 Staff Composition

Departments	Teachers	Support Staff	Health & Medical	Social & Welfare	Admin	Total
<b>PRIMARY</b>						
Mukuru Primary	5	2				7
St. Catherine	5	4				9
St. Bakhita	7	4				9
St. Elizabeth	6	8				10
Subtotal	23	18				41
<b>SECONDARY</b>						
St. Michael Secondary	19	5				24
Vocational Training	9				1	10
Subtotal	28	5			1	34
<b>SOCIAL &amp; HEALTH</b>						
Social Workers				9	1	10
Child Protection & Safeguarding				2		2
MPC Clinic		5	5			10
Subtotal		5	5	11	1	22
<b>WELFARE</b>						
Sponsorship					1	1
MPC Rehabilitation	3	9			1	13
Songa Mbele na Masomo	6	9	2		2	19
Subtotal	9	18	2		4	33
<b>ADMINISTRATION</b>						
Head Office					17	17
<b>TOTAL</b>	<b>60</b>	<b>46</b>	<b>7</b>	<b>11</b>	<b>23</b>	<b>147</b>

## Building and Infrastructure Developments

The year 2020 was unparalleled in recent history; however, MPC were committed to supporting the thousands of people who utilize our services each day. While developed countries could assist its citizens with welfare benefits, the residents of Mukuru had to find ways to survive with the basic necessities during the pandemic. The year commenced as per usual and then the pandemic announcement which created huge challenges in many areas through the Centre. The two scheduled building projects were not exempt. Sponsored by **The Kenyan Child Foundation**, the new multi-storey educational facility at Songa Mbele na Masomo Childrens' Centre for Children with Disabilities commenced in March; and the Vocational Skills Education and Therapy Centre for Youths Living with Disabilities, with major sponsors **Manos Unidas**, started later in the year. The Manos Unidas building required much more preparatory work due to the classification of the land parcel and navigating with the City County in the pandemic.

### Songa Mbele na Masomo New Facility



Architect: Malinson Koech – Lins Consults

Builder: Anshi Builders Ltd

Donor: The Kenyan Child Foundation



Wheelchair Circuit, Disability Toilet, Incinerator and Playground Equipment at Songa Mbele na Masomo



Donor: Guarda Third World Fund and Paula Cullen and Friends

Incinerator: Sancta Maria College, Dublin



Donor: Noreen Walsh and Friends – ‘Bridging the Gap with Hope’.

Rehabilitation Centre Basketball Court

Donor: Paula Cullen and Friends



Solar Energy infrastructure

Donor: Clare Chambers and Calary Church

## Our Lady of Mercy Vocational Training Centre

“Building a Better Future to the Disadvantaged Youth of Mukuru”.



*Front View*



*Rear View*

*Architect: Naomi Githeria Lynk Ltd*

*Builders: Lawton Ltd*

*Major donors: Manos Unidas,*

*Other donors: Marcel Zuzarte and Friends, Mr Salvatore, Jerry and Helen Killeen and Friends*

The therapy classroom project will be a unique building because it will target young adults living with disabilities. The long awaited construction commenced towards the second half of the year after much bureaucracy. The need for specialised training and instructions for youths was identified in 2018. Since then, there have been over 50 special needs students who have graduated from the vocational training centre. The purpose built project will help alleviate the extra challenges faced by youth living with disabilities. A six-member delegation from Spain (Cadena 100 (*Madrid radio station*)) visited the site to understand the situation and to share their experiences with their listeners at the Annual Cadena 100 concert. Inclusive education in Kenya is growing but there are many challenges.

## Education

### Primary Schools

While it was a good start to the year, 2020 proved to be enigmatic for learning institutions. The long closure of schools spelt so many unknowns. There was the fear of losing a number of pupils when normalcy returned due to the movement to the rural areas by many families. Most parents lost their livelihood due to the CoVid19 pandemic and some moved upcountry.



*St Catherine's Primary Pupils*

The impact of the CoVid19 pandemic on the Kenyan Education System has been tumultuous. According to the Ministry of Education in 2020, Kenya has 41,779 Early Childhood Centres and 39,910 Primary Schools with a total population of 17.8million pupils/students. The closure of the schools from March until October created more than just disruptions to the childrens' learning. The fears that were stated after the announcement became reality. The new curriculum training and implementations did not take place. The Teachers' Service Commission promotion and replacement of teachers to the schools was halted. The Kenya Certificate of Primary Education (KCPE) was postponed until 2021. The teachers did not complete the syllabi for any year level.

The Kenyan Government proposed that The Kenya Institute of Curriculum Development (KICD) create programs for pupils that utilised mediums of radio, television and mobile telephones; however, the pupils from the slums were severely disadvantaged as they do not have access to the technology or anything that required electricity. For the parents, many of them lost their casual jobs and found it extremely difficult to feed their children. It was equally difficult to keep good hygiene practices up since they were not able to buy water and soap.

Even though we experienced the pandemic, it did not stop the basic human needs and feeding thousands of children each week remained an enormous task and challenge. We were grateful to the donors, especially Team Pankaj for their incredible generosity throughout the year. Without their contribution hundreds of Mukuru residents would have died from starvation and not CoVid19.

Water is a perennial problem in the slums. The Kenya Government assisted many Mukuru residents by providing two bore holes to help families obtain water for hygiene purposes and to contain the spread of CoVid19 in the Mukuru catchment area. St Elizabeth Primary School and Sancta Maria Mukuru Kayaba both received bore holes that was to produce an estimated capacity of 2,000,000 litres a day.

As the year progressed several dates for reopening schools continued to change. The multi-agency trial to have a community based learning program in collaboration with chiefs and village elders in the community where teachers were mapped with learners to offer face to face learning at no cost proved impossible to facilitate. None of the TSC teachers in our schools lived in the slums so this meant that the children were neglected again.

In October, only Grade 4s and Grade 8s were allowed to resume for face to face learning with strict hygiene protocols. Schools were inspected before they were permitted to receive pupils for the commencement of term 2. The Cabinet Secretary for Education, Professor Magoha convened a 10 member task force to evaluate the best way to reopen schools and sought contributions from the public as well as institutions. MPC submitted its application to re-open the schools as soon as possible due to the many complex issues facing slums.

### Enrolments

For the last five years MPC primary schools' enrolment have been on an upward trend with a slight decrease in 2020. The enrolment was partially disrupted by the sudden school closure in March as well as the enforcement of enrolment policy guidelines.

<i>Mukuru Promotion Centre Primary School Enrolments 2016 - 2020</i>					
Primary Schools	2020	2019	2018	2017	2016
St Bakhita Primary	972	1,034	986	825	938
St Catherine's	1,211	1,317	1,289	1,270	1,218
St Elizabeth	1,885	1,938	1,817	1,693	1,528
Sancta Maria Mukuru Kayaaba	1,733	1,666	1,686	1,246	1,546
<b>TOTAL</b>	<b>5,801</b>	<b>5,955</b>	<b>5,778</b>	<b>5,034</b>	<b>5,230</b>

The issue of teacher / pupil ratio continued to cause challenges for the Primary Schools. MPC sent repeated delegations to the Ministry of Education and Teachers' Service Commission to address the imbalance. Without staff subsidization by MPC at the schools the ratio would be unmanageable impacting on the quality of education to the children.

<i>Teacher / Pupil Ratio for MPC Schools in 2020</i>					
School	No. of TSC Teachers	No. of Teachers out of school due to ill health	Total TSC Teachers Available in School	School Enrolment as at the end of February	Pupil /Teacher Ratio
St. Bakhita	16	1	15	972	1:65
St. Catherine	20	2	18	1,211	1:67
St. Elizabeth	27	0	27	1,885	1:70
Sancta Maria Mukuru Kayaaba	24	0	24	1,733	1:72
<b>Totals</b>	<b>87</b>	<b>3</b>	<b>84</b>	<b>5,801</b>	



### KCPE Candidates and Grade 4

When the schools reopened on 12<sup>th</sup> October it was only for Grade 4 and Class 8 pupils. The reason for the two year groups return only was to enable Class 8 candidates to prepare for the National examinations (KCPE) scheduled for March 2021, and Grade 4 to continue with the new curriculum. The other 80% of the school population had to wait until 2021 to resume classes.

<i>Grade 4 Enrolments October 2020</i>						
School	Present Learners		Total Present	Absent Learners		Total Absent
	Girls	Boys		Girls	Boys	
St Bakhita	65	45	109	8	3	11
St Catherine's	57	65	122	2	3	5
St Elizabeth's	112	96	208	4	13	17
Sancta Maria Mukuru Kayaaba	90	106	196	6	8	14
<b>Total</b>	<b>323</b>	<b>312</b>	<b>635</b>	<b>20</b>	<b>27</b>	<b>47</b>

<i>Class 8 Candidates Enrolments October 2020</i>						
School	Present Learners		Total Present	Absent Learners		Total Absent
	Girls	Boys		Girls	Boys	
St Bakhita	43	53	96	3	5	8
St Catherine's	83	58	141	2	1	3
St Elizabeth's	103	104	207	0	9	9
Sancta Maria Mukuru Kayaaba	109	92	201	4	1	5
<b>Total</b>	<b>338</b>	<b>307</b>	<b>645</b>	<b>9</b>	<b>16</b>	<b>25</b>

The absenteeism was mainly due to the relocation of parent's upcountry because of the loss of jobs during the CoVid19 pandemic. The full extent of the absenteeism will not be known until all classes resume in 2021.

At the commencement of the academic year plans had been put in place to develop a stronger reading culture among the pupils. The culture of speaking 'sheng' (slang) in Mukuru villages has impacted negatively on the education and performance of our schools. In February, reading clubs were launched in all the schools with the aim to improve the reading culture, creative writing and oral presentations and influence performance in examinations. Each school put in place a language policy and revamped the teaching techniques like storytelling, debating, spelling competitions as well as frequent use of the school libraries. Towards the end of the year MPC Primary Schools conducted tuition classes for slow learners and managed by the MPC employed teachers. The tuition further addressed basic mathematics, motor skills, talent nurturing, health, safety protocols and CoVid19.



One of the extraordinary consequences of school closures because of CoVid19 was the staggering statistic of teenage pregnancies in the country recorded in a 3 month period was 262,679 (Ministry of Health June 2020). The long school break had a detrimental impact on pupils and students. Our social workers recorded unprecedented predicaments. Increases in:

- Violence
- Sexual abuse cases
- Child exploitation
- Recruitment in criminal gangs
- Drug Abuse
- Begging for food
- Prostitution / pornography
- Sexual predators
- Lack of supervision

Much lobbying was conducted with the Ministry of Education (MOE) to allow children from Mukuru slums to return to MPC schools. The Government eventually permitted our children to return to school with an adjusted curriculum.

Sancta Maria Kayaba Primary School had a special visitor. The Cabinet Secretary of Education Professor George Magoha spent time reacquainting himself with the classroom. Accompanied by other Government officials and led by the Nairobi Regional Education Director, Mr Obiero, Professor Magoha also provided 70 desks from the National Government. The children and teachers were excited.



*Professor Magoha CS at Sancta Maria Mukuru Kayaaba*



In the midst of the gloom from CoVid19 pandemic there were hope filled signs. MPC initiated a hope filled environmental project. At the primary schools, the planting of bamboo and cedar trees all-round the schools' perimeter walls was achieved. With the help from the National Youth Service (NYS) team the project had a two-fold purpose; the greening of the area and providing some extra security from floods to the schools.

St Michael's Secondary School

The year 2020 produced many hurdles for the administration as well as students. St Michael's managed to conduct 10 weeks of lessons before the Government closed all learning institutions in mid-March due to the CoVid19 pandemic. The Form 4 and Form 3 students returned in August to an adapted curriculum to boost general knowledge, cultural and sporting activities. A number of sponsored students in Form 1 and Form 2 also joined the communication skills program. October saw term 2 resume for the Form 4s and prepare for the National Examinations (KCSE) scheduled for March 2021. Flexibility and personal responsibility were the key factors for students in 2020.

The full complement of St Michael's Form 4 students did not attend classes until November. Upon their return the students were assessed to gauge how big the 'performance gap' was and what extra work needed to be conducted with the syllabus before the end of the 2<sup>nd</sup> term and before the mock examinations (16<sup>th</sup> December). Morning hour sessions were held to assist students to bridge the gap to ensure that the syllabus was covered for the term. The on-line learning initiative was totally ineffective for our students as they did not have the devices, infrastructure and funds for data bundles. Only 25% of Form 4s had access to the on-line facilities. A WhatsApp page and homework packages for the Form 4s was organised for the students to collect from the library and return. Not all students participated in the program as they were seeking to find casual employment to help with feeding their families.

During the quiet periods in the year the Principal and Staff managed to catch up on much needed administration. The social worker was kept busy with follow ups on desperately needy families. Over 80 parents received food hampers from Team Pankaj. A number of teachers were sponsored by Strathmore University's Macheo program on the Foundations of Teaching with Technology which was a big boost in the delivery of some lessons. The enrolments in term one was over 370 students with 20 teachers.

St Michael's Secondary School Enrolments 2020				
Class		Girls	Boys	Total
Form 1	North	18	16	34
	South	14	16	30
Form 2	North	13	25	38
	South	16	26	42
Form 3	North	18	24	42
	South	19	26	45
	East	21	25	46
Form 4	North	15	36	51
	South	21	30	51
<b>Total</b>		<b>160</b>	<b>219</b>	<b>379</b>

Before the Form 4s could resume classes strict CoVid19 guidelines and protocols were given to all learning institutions to observe and be checked off by authorities. St Michael's received a visit from the Area Administration Police and representative from the Kenya Conference of Catholic Bishops. Given the space in our classrooms we were permitted to have 18 students per classroom. The students were spread across five classrooms which made life much easier for the teachers compared to the normal number of up to 50 per class.

The results for St Michael's Students in 2020 are only partial. All students managed to receive all of term one lessons. Then there was a combination of terms two and three with internal

examinations and mock examinations. The results identify areas where much work will need to be completed in 2021 academic year.

One of the many programs at St Michael's to help students achieve was the mentorship. There were several private companies who offer mentoring as part of their corporate social responsibility. The guest speakers would address the students, activities would be conducted and conclude with some fun activities and a meal. The mentoring was particularly pragmatic with the massive disruptions to learning in 2020.

The extra-curricular activities were reduced in number, but our students managed some involvement in the initial stages of the Sub-County games (basketball and athletics). Friendly matches were organised with other schools to help boost the spirits of the students: soccer, basketball, volleyball and netball. The cultural activities also included drama and music in-house competitions.

One positive dimension of CoVid19 for St Michael's students was the development of the cultural activities. A successful cultural afternoon was held. The students were able to show case their talents which included acting, dancing, singing, rapping and recitals. Some of the themes included the CoVid19 pandemic.



*St. Michael's students performing*

### **St Michael's Secondary School Activities for 2020 Academic Year**

<b>Academic</b>	<b>Sporting</b>	<b>Cultural</b>
Subject lessons and Pre-mock examinations	Athletics	Drama
WhatsApp sessions	Basketball	Poems
Learning and Revision Packets	Volleyball	Music
Interpersonal Communication Skills	Netball	Choir
Science Experiments		Mentorship programs
Remedial program		Talent show
Pre-mock examinations		Singing and Rapping

The academic results for St Michael's in 2020 reflect the internal examinations conducted by the school. The national examinations (KCSE) will be held in March 2021. The gender captured results below include the opening, mid-term and end term exams for Term 1 and Term 2 for the 2020 academic year.

**St Michael's Internal Examination Analysis For 2020 Academic Year  
Form One to Form Three**

Form 1	Eng	Kis	Math	Biol	Phy	Chem	Hist	Geo	CRE	Agric	B/Std	Comp.	Mean Score	Mean Grade
<b>F1N</b>														
Girls	7.84	5.16	3.84	5.89	4.68	8.74	5.32	6.63	8.37	5.63	4.58	4.79	<b>5.96</b>	<b>C</b>
Boys	5.93	3.07	2.67	3.07	2.67	6.73	4.53	5.20	4.73	3.67	3.60	5.40	<b>4.27</b>	<b>D+</b>
<b>Average</b>	<b>6.89</b>	<b>4.11</b>	<b>3.25</b>	<b>4.48</b>	<b>3.68</b>	<b>7.74</b>	<b>4.92</b>	<b>5.92</b>	<b>6.55</b>	<b>4.65</b>	<b>4.09</b>	<b>5.09</b>	<b>5.11</b>	<b>C-</b>
<b>F1S</b>														
Girls	9.13	6.25	3.25	5.19	4.88	8.06	8.38	6.38	7.63	5.94	2.63	5.63	<b>6.11</b>	<b>C</b>
Boys	6.74	3.63	2.42	3.11	3.00	5.63	5.05	4.21	4.74	3.11	1.61	4.89	<b>4.01</b>	<b>D+</b>
<b>Average</b>	<b>7.93</b>	<b>4.94</b>	<b>2.84</b>	<b>4.15</b>	<b>3.94</b>	<b>6.85</b>	<b>6.71</b>	<b>5.29</b>	<b>6.18</b>	<b>4.52</b>	<b>2.12</b>	<b>5.26</b>	<b>5.06</b>	<b>C-</b>
<b>Form Average</b>	<b>7.41</b>	<b>4.53</b>	<b>3.04</b>	<b>4.31</b>	<b>3.81</b>	<b>7.29</b>	<b>5.82</b>	<b>5.60</b>	<b>6.37</b>	<b>4.59</b>	<b>3.10</b>	<b>5.18</b>	<b>5.09</b>	<b>C-</b>
Form 2	Eng	Kis	Math	Biol	Phy	Chem	Hist	Geo	CRE	Agric	B/Std	Comp.	Mean Score	Mean Grade
<b>F2N</b>														
Girls	7.57	3.43	1.36	3.86	3.00	3.29	5.86	6.21	5.79	6.00	6.20	4.43	<b>4.75</b>	<b>C-</b>
Boys	6.88	2.32	1.64	2.56	2.72	2.40	4.64	5.32	4.36	3.24	6.13	4.48	<b>3.89</b>	<b>D+</b>
<b>Average</b>	<b>7.23</b>	<b>2.87</b>	<b>1.50</b>	<b>3.21</b>	<b>2.86</b>	<b>2.84</b>	<b>5.25</b>	<b>5.77</b>	<b>5.07</b>	<b>4.62</b>	<b>6.16</b>	<b>4.45</b>	<b>4.32</b>	<b>D+</b>
<b>F2S</b>														
Girls	7.80	3.40	1.47	5.20	2.93	2.53	6.13	5.00	9.20	4.00	7.10	3.40	<b>4.85</b>	<b>C-</b>
Boys	5.57	2.83	1.39	4.13	2.35	2.04	5.09	4.00	7.00	3.80	4.46	4.50	<b>3.93</b>	<b>D+</b>
<b>Average</b>	<b>6.68</b>	<b>3.11</b>	<b>1.43</b>	<b>4.67</b>	<b>2.64</b>	<b>2.29</b>	<b>5.61</b>	<b>4.50</b>	<b>8.10</b>	<b>3.90</b>	<b>5.78</b>	<b>3.95</b>	<b>4.39</b>	<b>D+</b>
<b>Form Average</b>	<b>6.95</b>	<b>2.99</b>	<b>1.46</b>	<b>3.94</b>	<b>2.75</b>	<b>2.57</b>	<b>5.43</b>	<b>5.13</b>	<b>6.59</b>	<b>4.26</b>	<b>5.97</b>	<b>4.20</b>	<b>4.35</b>	<b>D+</b>
Form 3	Eng	Kis	Math	Biol	Phy	Chem	Hist	Geo	CRE	Agric	B/Std	Comp.	Mean Score	Mean Grade
<b>F3N</b>														
Girls	4.41	5.05	1.77	2.75	1.27	1.73	5.75	4.33	5.50	4.00	2.40	5.80	<b>3.73</b>	<b>D+</b>
Boys	3.63	4.37	2.26	2.29	3.25	2.16	6.00	4.50	5.61	5.33	1.67	5.30	<b>3.86</b>	<b>D+</b>
<b>Average</b>	<b>4.02</b>	<b>4.71</b>	<b>2.02</b>	<b>2.52</b>	<b>2.26</b>	<b>1.94</b>	<b>5.88</b>	<b>4.42</b>	<b>5.56</b>	<b>4.67</b>	<b>2.03</b>	<b>5.55</b>	<b>3.80</b>	<b>D+</b>
<b>F3S</b>														
Girls	4.00	6.00	1.61	5.86	2.45	1.67	5.90	4.63	6.18	3.33	3.20	5.00	<b>4.15</b>	<b>D+</b>
Boys	2.58	3.88	1.54	4.20	2.36	1.67	4.79	4.70	3.88	2.25	2.09	5.78	<b>3.31</b>	<b>D</b>
<b>Average</b>	<b>3.29</b>	<b>4.94</b>	<b>1.58</b>	<b>5.03</b>	<b>2.41</b>	<b>1.67</b>	<b>5.34</b>	<b>4.66</b>	<b>5.03</b>	<b>2.79</b>	<b>2.65</b>	<b>5.39</b>	<b>3.73</b>	<b>D+</b>
<b>F3E</b>														
Girls	3.00	5.72	1.88	3.43	2.09	2.33	5.50	1.50	4.72	5.00	3.47	1.00	<b>3.30</b>	<b>D+</b>
Boys	2.31	3.69	2.12	1.64	2.80	1.81	4.22	6.25	4.15	5.00	3.64	2.44	<b>3.34</b>	<b>D</b>
<b>Average</b>	<b>2.65</b>	<b>4.71</b>	<b>2.00</b>	<b>2.53</b>	<b>2.45</b>	<b>2.07</b>	<b>4.86</b>	<b>3.88</b>	<b>4.44</b>	<b>5.00</b>	<b>3.55</b>	<b>1.72</b>	<b>3.32</b>	<b>D+</b>
<b>Form Average</b>	<b>3.32</b>	<b>4.78</b>	<b>1.86</b>	<b>3.36</b>	<b>2.37</b>	<b>1.90</b>	<b>5.36</b>	<b>4.32</b>	<b>5.01</b>	<b>4.15</b>	<b>2.74</b>	<b>4.22</b>	<b>3.62</b>	<b>D+</b>

## Our Lady of Mercy Vocational Training Centre

In education, every new academic year brings new hopes, new goals and chances for new beginnings. By the end of January OLMVTC there were just under two hundred students who had enrolled in one of eight courses on offer. The results of the 2019 National Industrial and Training Authority (NITA) and Kenya National Examination Council (KNEC) examinations were released with a success rate at 88%.

### 2019 Exam Results (NITA and KNEC)

Department	Male	Female	Total No. Students Enrolled	No. Students who passed	No. of Students Registered for NITA/KNEC
Hairdressing	2	32	34	34	34
Beauty	3	21	24	23	24
Food & Beverage (Catering)	10	34	44	43	44
Plumbing	11	0	11	11	11
Masonry	11	0	11	9	11
Dressmaking / Garment Making	4	16	20	17	18
Art and Craft	14	3	17	9	9
Front Office Management	2	18	20	14	14
<b>Total</b>	<b>57</b>	<b>124</b>	<b>181</b>	<b>160</b>	<b>165</b>

Not all students enrolled sat for KNEC/NITA examinations especially special needs students. There are a number of students who did not manage to get their KCSE result slip due to fees arrears making it impossible to register them. KCSE result slip is a requirement for KNEC registration.

From March 2020 we saw dramatic shifts and changes and incredible disruption for learning institutions in Kenya. Examinations were postponed and work experience placements were cancelled. Even after the resumption of courses in October 2020, some of our students opted to stay at home due to the unknowns and anxieties. Although there was a huge impact from CoVid19 we found ways to stay connected virtually with our students and assisted them through a partial closure. Some of our dressmaking students embarked on mass production of facemasks for the Mukuru community to help curb the spread of the virus. The pandemic not only brought about negative impacts but also positive impacts. The courses and programs that had an intermittent operation were: Arts and Crafts and Plumbing and Masonry and Dressmaking. When the Government permitted the re-opening of vocational training centres the initial return of students was only 46% and towards the end of the year it increased a little to 70%. The Plumbing and Masonry Grade II examinations were held in late November and the results will not be known until 2021.





*Plumbing students set up a number of hand washing stations around the compounds to ensure compliance with the CoVid19 protocols.*



Another project that continued to operate during the pandemic was the Mushroom Project for Youths with Disability. The objective of the project was to engage three groups of persons with disabilities from Mukuru Slum, Kibera and Limuru. The plan of this partnership was to start fifteen businesses in three years' time and to provide stable income for 120 disabled youths. By the end of the year several phases of the project were accomplished and managed to sell hundreds of punnets of mushrooms.



*Mr Patrick Nganga (Art Instructor) displays the CoVid19 signs.*



*Harvested mushrooms ready for sale*

Designing visual aids to promote awareness of CoVid19 pandemic kept the art students fully engaged. The large signs ensured that all staff and visitors to the five MPC sites were sensitized on the Ministry of Health protocols by developing visual ways of providing information.

Another achievement in 2020 was development of the e-waste project which received approval from the National Environmental Management Authority. Titled **"Inuka"**, a step by step Community Based Organisation, gained registration with the Ministry of Labour and Social Security Services from the implementation to monitoring social economic development of Mukuru youths. In a year full of challenges, Our Lady of Mercy Vocational Training Centre, managed to provide some hope to many students.

## Social and Health Services

### Social Services

The turbulent and frenetic pace of 2020 was unprecedented. The Social and Health Services Department arranged assistance to children, teenagers, young adults and seniors in the Mukuru Community. The bulk of the work was engaged in the humanitarian aid due to the pandemic. With the closure of the schools, reduction in casual employment and rise in hunger, it was critical to identify the sick, needy and vulnerable families quickly to support them with basic necessities. Donations were received from different donors throughout the year. The economic suffering of the people was the greatest stress throughout the year. People lost their casual jobs, were evicted from their homes (shacks), unable to pay rent, put food on the tables for their families, victims of fires, seeing their children getting involved with the wrong gangs and being exploited. These are the tragedies of the pandemic.

The additional work guaranteed that as many families as possible received appropriate hygiene materials to help curb the spread of the virus in the community. Other aid support like clothes and blankets were distributed to the needy and the fire victims. As many clients lost their source of livelihood this caused them to relocate upcountry. Much time is still spent in obtaining birth certificates. As Government agencies, especially the Ministry of Education is going digital, it is imperative for the childrens' future that they receive the official documentation.

Over 28,000 activities were facilitated by the MPC social workers ranging from follow up on abuse cases and nutritional assistance to home visits and disaster support. Thousands of food hampers and immunity booster parcels were distributed from March until October. A number of distribution sites had to be developed in collaboration with the Police to ensure that the right protocols were observed. The unparalleled number of teenage pregnancies caused much concern and considerable effort was afforded to secure the teenage mothers received moral, financial, and material support. MPC identified more than 40 teenagers who attend MPC schools.

In amongst the many challenges in 2020 there were many achievements in professional development trainings: staff members received training on CoVid19 protocols by the Ministry of Health; the Kenya Sign Language, Child Protection and Safeguarding, Income Generating Activities for parents who received business start-up kits; and the 'Employ-able' program for Youths with Special Needs (30) commenced and produced mushrooms for re-sale; Community Health Volunteers.

The other initiatives in 2020 were the intellectually and physically disabled youths who were supported through programs. The Mushroom project was one highly successful program with 78 pallets distributed.

### Summary of Client Interventions for 2020

Case Type and Activities	Schools	Welfare	Nutrition	Health / Other	Total Clients Served
Absenteeism and Truancy	366	126			492
Abuse Cases (Physical, Child Neglect, Sexual and Rape)	60	1			61
Amaranth Flour Supplement Program	14		98		112
Assistive Devices		51			51
Behavioural Issues	15	25			40
Business Support (Start Up Kits) and IGAs		6			6
Counselling	274	43			317
CoVid19 Immunity Parcels and Food Hampers	2,093			1,300	3,393
Disability Training—Awareness and Inclusion		121			121
Drug Abuse and Dependency Cases	2				2
Education Support (uniforms, learning materials, fees)	52				52
Emergency Food Support	3,480	939			4,419
Employ Able Youth program under the Vocational Training		11			11
Family Support— (fire outbreaks, disasters, blankets and clothes)	1,885	84			1,969
Girls Sanitary Pads	948	31			979
Home Visits—Home Care and Class 8 Assessments	767	80		20	867
Hypertension / Diabetics Profiling				509	509
Malnourished Babies			20		20
Masks distribution	1,120	469			1,589
Medical Care—Hospital Visits and Referrals	380	204		92	676
Medical Care – Child Deworming Program	3,766			1,000	4,766
Moral Formation Sessions—Pupils/Students-Community Health Workers	3,784	175			3,959
Parent Meetings and Training		121			121
Profiling Primary, Secondary and Vocational Training Students	1,020	65			1,085
Rent support	2	9			11
Sponsorship Primary, Special Education, Secondary, Tertiary		52			52
Teenage Pregnancies	9	21		7	37
<b>Total</b>	<b>20,037</b>	<b>2,634</b>	<b>118</b>	<b>2,928</b>	<b>25,717</b>

## Child Protection and Safeguarding Office

The Child Protection and Safeguarding Office (CPSO) was involved in dozens of activities which were lessened due to the CoVid19 restrictions mandated by the Government. Those who were serviced by the activities numbered 2,199 children, students, youths, staff and seniors for the year. The activities such as: trainings, counselling, court sessions, rescue of survivors, networking, motivational talks and case management were made possible through collaborations within the County.

### Child Protection and Safeguarding

Networking Collaborators		
Directorate of Criminal Investigations DCI	ANPCAN	Mwangaza Rehabilitation Centre
MPC Social Office	Nairobi Women's Hospital - GVRC	Community Health Volunteers
Sub-County Childrens' Office and Volunteer Children Officers	Ministry of Health	NACADA
Gender Based Violence – Starehe and Makadara	CREAW (Centre for Rights Education and Awareness)	ADAPPKE (Alcohol and drug abuse prevention practitioner's association)
NCPT (Nairobi Child Protection Team)	KCBC (Kenya Catholic Bishops Conference)	Mathare Peace Initiative
Mater Misericordiae GBV Office	Village Elders	Horizont3000

### MPC Clinic

The Mary Immaculate Clinic (MIC) provided services that range from first-aid, clinical treatments, mother /child wellness, prenatal and antenatal, cervical cancer screening, tuberculosis therapy, HIV/AIDS, volunteer counselling tests (VCT), nutritional projects, laboratory to pharmaceutical services and is the most affordable Clinic in the area. The Clinic treated over 13,000 patients amounting to over 17,000 diseases and conducted in excess of 6,000 laboratory tests. The University of St Elizabeth, Slovakia continued with the 'internship' program that involves several medical doctors conducting 3-month placements at the Clinic. This is a great program and very necessary for the residents and staff. Since 2015, there is one volunteer doctor who provides her services free and specializes with the cervical cancer screening.

Great support was provided by Manos Unidas with the 'Emergency Grant' which helped treat many at the Clinic including the suspected CoVid19 patients. To help deal with the pandemic the grant provided for the purchase of new laboratory machines (*biochemistry analyzer, Incubator oven, centrifuge*) supplies, extra personnel and medications. CoVid19 sensitization sessions were held for staff and updates given. The immunity booster parcels, and food hampers provided great relief to thousands of patients and families who were more concerned about food than the virus. In response to the CoVid19 pandemic the Clinic constructed an isolation room to further protect staff and patients. The Ministry of Health ensured that the Clinic was fumigated on a regular basis from August. Throughout the year we received consistent positive feedback from the Ministry of Health when they conducted their monthly visits. One of the new developments at the Clinic was with the insistence from the Ministry of Health for the MIC to have a full HIV/AIDS Comprehensive Care Centre, CCC, as some of the patients did not feel comfortable attending the Mater Misericordiae Hospital. The other commonplace programs that continued in 2020 are captured below.

Commonplace Programs Held at the MPC Clinic in 2020					
Program	No.	Program	No.	Program	No.
Childrens' Immunization	800	Antenatal Profiles	700	Home Based Care	60
Vision Camp – 'Dot Glasses'	107	Health Talks at Clinic and Schools	20	Deworming	4,766
Malnourished Program	300	Prevention Infection Control - Sensitization – common ailments	12	Tuberculosis	80
Trainings – CoVid19, HIV/AIDS, Tuberculosis, VCT, Immunizations,	24	Empowering Persons Living with Disabilities	30	Comprehensive Care	57
Continuous Medical Education - MOH	12			<b>Total</b>	<b>6,908</b>

MIC received many donations as seen below from a number of donors and well-wishers which were received well by the residents of Mukuru slums.

### Donations Received

Immunity Booster Parcels	Food Hampers	Wheelchairs
Face Masks	Multi-media educative system	Personal Protective Equipment
Detergents and Disinfectants	Blankets and baby caps	Thermo Guns
Water dispensers	Nebulizer machine	Baby clothes, caps and diapers
Blankets	Hand sanitizers	Medications



## MPC Clinic Patients Treated in 2020

Cases	Gender	Under 5	6yr - 13 yrs	Above 13	18-35 yrs	Above 36	Total
New Registration	Male	778	328	1,062	334	194	2,696
	Female	780	296	1,621	483	228	3,408
	<b>Subtotal</b>	<b>1,558</b>	<b>624</b>	<b>2,683</b>	<b>817</b>	<b>422</b>	<b>6,104</b>
Revisits							
	Male	1,130	298	1,036	269	298	3,031
	Female	1,126	290	1,743	598	331	4,088
	<b>Subtotal</b>	<b>2,256</b>	<b>588</b>	<b>2,779</b>	<b>867</b>	<b>629</b>	<b>7,119</b>
<b>Total</b>		<b>3,814</b>	<b>1,212</b>	<b>5,462</b>	<b>1,684</b>	<b>1,051</b>	<b>13,223</b>

## Treated Diseases For 2020

Disease	Jan	Feb	Mar	Apr	May	June	July	Aug	Sept	Oct	Nov	Dec	Total
Abdominal Pregnancy	41	41	39	40	52	59	38	128	93	90	70	91	782
Allergies		34	37	29					19			23	142
Arthritis	13											20	33
Convulsive Disorder										10	7	11	28
Fever	46	75	76		51	94	51	25	72	63	67	135	755
Fungal Infections										31	29	46	106
Gastritis / PUD	92	55	46	58	67	81	43	56	78	139	93	80	888
Gastroenteritis	240	248	289	158	248	213	140	155	326	106	202	155	2,480
Headaches - Tension							35	31	67			14	147
HIV/AIDS										11	12	28	51
Hypertension / Diabetes	49	27	40	62	54	73	70	42	63	29	54	82	645
Malaria	31									7	16	9	63
Musculoskeletal Disorder										27	60	76	163
Neuralgia and Neuritis		45		46	87	68	51	43	137	71	20	40	608
Other	408	429	382	225	297	325	289	318	259	92	162	206	3,392
Respiratory Lower		87	166	36	46	68	46			49	46	105	649
Respiratory Upper	125	433	565	202	312	248	226	162	345	138	120	123	2,999
Skin Infections	91		49	31	55			48	29	30	69	46	448
Soft Tissue Injuries & Wounds						47			63	47	58	76	291
Tonsillitis										39	24	27	90
Tuberculosis	5								31	28	33	35	132
Urinary Tract Infection	263	176	206	219	222	277	182	134	338	151	152	175	2,495
													-
<b>Total</b>	<b>1,404</b>	<b>1,650</b>	<b>1,895</b>	<b>1,106</b>	<b>1,491</b>	<b>1,553</b>	<b>1,171</b>	<b>1,142</b>	<b>1,920</b>	<b>1,158</b>	<b>1,294</b>	<b>1,603</b>	<b>17,387</b>

## Laboratory Tests

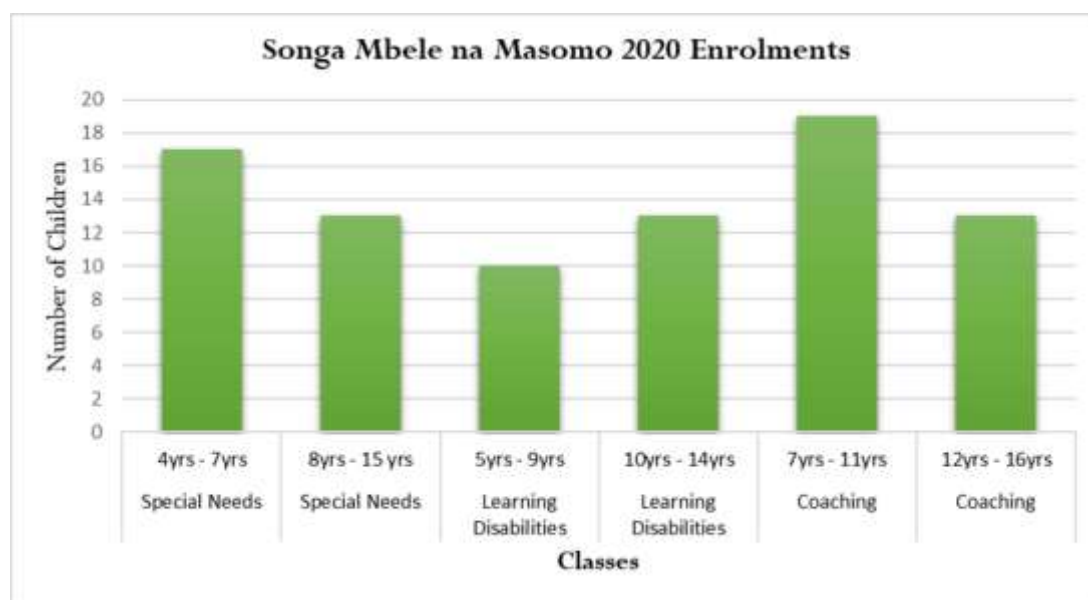
Test	Jan	Feb	Mar	Apr	May	June	July	Aug	Sept	Oct	Nov	Dec	Total
Antenatal Profile Test	30			30	37			35	29	28	22	19	230
Full Haemogram	141	122	139	36	55	104	76	71	104	124	31	73	1,076
Haemoglobin Levels										11	19	13	43
H. Pylori		33	24						15	38	32	21	163
High Vaginal Swab									15		28	13	56
Malaria	121	108	90	16		56	30		29	67	62	23	602
Others	123	106	129	61	85	139	85	107	16	44	31	23	949
Pregnancy Test									15			14	29
Random Blood Sugar Test						32	34	38	22	36	42	31	235
Rheumatoid Factor					26				22	12	10	7	77
Salmonella Antigen											12		12
Stool	125	151	170	56	75	104	70	90	83	112	136	76	1,248
Urinalysis	159	116	146	101	109	162	102	107	112	142	164	82	1,502
Vdrl										24		2	26
<b>Totals</b>	<b>699</b>	<b>636</b>	<b>698</b>	<b>300</b>	<b>387</b>	<b>597</b>	<b>397</b>	<b>448</b>	<b>462</b>	<b>638</b>	<b>589</b>	<b>397</b>	<b>6,248</b>

## Welfare Services

### Songa Mbele na Masomo

Flexibility was the major theme for Songa Mbele in 2020. There were several concurrent events. The preparatory work for the new facility meant that the children and staff had to relocate to different spaces in the centre compound. The new playground, incinerator and disabled toilets were completed by the first quarter. Although the activities started well in the beginning of the year the Centre was not exempt from the pandemic and children were sent home. The CoVid19 situation adversely affected the children. The demand for therapeutic services for the children was critical for them to progress in their rehabilitation and by May the therapy sessions were offered again to the children. The activities continued but on a rotational system. The number of malnourished children and adults rose sharply. The children returned in small manageable numbers to observe the strict CoVid19 measures. The administrative part of the centre continued as there were many vulnerable and marginalised children and families who needed assistance.

The demand for services for children living with disabilities is enormous. The current Centre has certainly outgrown its size. The Kenyan Child Foundation committed to build a new multi-storey facility that will increase the capacity to over 200 children who will receive ongoing therapy, lessons, and training for parents. The project will take 52 weeks to complete, and we hope by April 2021 the new centre will be operational. The new facility will further enhance the Centre's mission to help children and parents who live with disabilities, be empowered through learning relevant skills and knowledge.



The other area of transformation for the centre was the playground area inclusive of swings, wheelchair friendly toilet, and wheelchair circuit. Apart from further developing their motor skills, strengthening their muscles, the children experienced great joy during the year playing on the new equipment.

Throughout the year the Centre received visitors from Spain, Ireland, England and people from many local corporations. We are grateful to the donations that were received in 2020.

Donations Received in 2020		
Immunity Booster Parcels	Food Hampers	Rent Assistance
Vegetables	Diapers	Face masks
Hand sanitizers	Clothes and shoes	Tank stands for hand washing
Medications	Blankets	Water drums

The activities at the Centre included: CoVid19 kits, food hampers, medical follow-ups, nutritional support, sanitary towels, profiling for therapy, clothes, blankets, home visits, needy assistance, abuse case follow-ups, fire outbreaks and start-up support. A number of trainings were conducted throughout the year such as the Disability Awareness, Kenya Sign Language and Sexual Reproduction and Health program for children, parents and staff.



*Front view new multi-storey facility*

One major difficulty that the Centre has concerns the delay by Government bodies issuing the medical reports for children living with disabilities, as it delays individual learning programs for the children and for the teachers and staff to know the right way to assist the children.

## MPC Rehabilitation Centre

The tireless support and watchful eye by the donors during a most difficult year deserve special recognition. The boys were well nourished, and their immunity boosted by the vast supply of fruits and vegetables received throughout the year. The CoVid19 pandemic lockdowns and curfews caused numerous unanticipated challenges that resulted in a heavy toll on the annual planned activities. The centre was unable to meet the annual recruitment targets, home searches and home visits that are an essential for the reintegration program.

The carpentry and joinery students secured attachments and were to begin their new life of independence in March but with the CoVid19 pandemic the program was cancelled.

The Centre has a multifarious approach to provide the boys with the right tools to manage their lives regardless of backgrounds. The Centre essentially accommodates the option for the boys to reassess their lives and reconnect with their families where possible. Through education, counselling, therapy, creative arts, environmental awareness and sporting activities the boys are guided to look at the different components of their lives to determine their best selves. The program involves understanding the boy's current status, gaining their trust, determining medical wellbeing, testing educational capacity to place them in a conducive learning environment, providing a safe place to be while they have time to reflect, share and grow as individuals without fear or anxiety.

Learning Institution	Year 1	Year 2	Standard 3 & 4	Standard 5 & 6	Standard 7 & 8	Secondary	Vocational	Total
Rehab	5	4	7	8	7		9	40
St Catherine			2	2	5			9
SSP Embu					2			2
St Michael						1		1
Mangu Boys						1		1
Mbaikino						1		1
Mururia						1		1
Total	5	4	9	10	14	4	9	55

The recruitment program raises awareness among street families of the need for positive change in lifestyles by visiting the different catchment areas. The CoVid19 pandemic halted the recruitment and reintegration processes which resulted in MIRC not being able to achieve its set targets for 2020. The Centre worked hard to keep the boys focused in the difficult situation.

Despite the pandemic, constant efforts were made to achieve a sense of normality for the boys. The learning continued with minimal disruptions and most of the boys did well academically and a few others with learning difficulties were given remedial assistance. Since 2019 we

have been trying to get ‘tablet kits’ that would assist with the boys learning. The Profuturo kit eventually arrived. The self-contained kit comprises 40 tablets, server, laptop, data projector. Different curricula can be uploaded on the tablets. The technological methodology certainly makes the boys learning more interesting and can be tailored for each student to progress at their own levels of ability.

The carpentry students have demonstrated a lot of confidence in their learnt skills and have finished several projects and orders. They will sit for their NITA examinations in April 2021.

The extra curricula program is important and embraced well by the boys. The Centre’s basketball court was completed and used extensively during the year. From the physical activities such as football, acrobatics, dancing, art and beadwork, scouting, yoga and gardening were practiced during the year and helped the boys to improve and maintain their levels of positive energies to the environmental projects such as the vegetable garden. The farming program boosted the farming produce as well as giving the boys further skills that will allow them to manage portions of gardens with minimum supervision.

### **New Developments**

A considerable development towards the end of the year was the installation of the solar power and hot water system. While the boys can enjoy hot showers, the Centre will experience much smaller power bills.

<b>Donations Received in 2020</b>		
Immunity Booster Parcels	Food Hampers	Chickens and Rabbits
Vegetables	Portable Speaker	Face masks
Hand sanitizers	Clothes and shoes	Meat and Bread
Sporting Boots	Croc Sandals	Seedlings
Pallets	Handwashing containers	Sawdust
Yoga Classes	Milk	Track suits
School shoes and leather soccer balls.	Gymnastic equipment	Toiletries
Protective Equipment for carpentry students	Blankets	Mosquito Nets
Casual footwear, socks, boxer shorts and vests	Drip irrigation system	Chickens



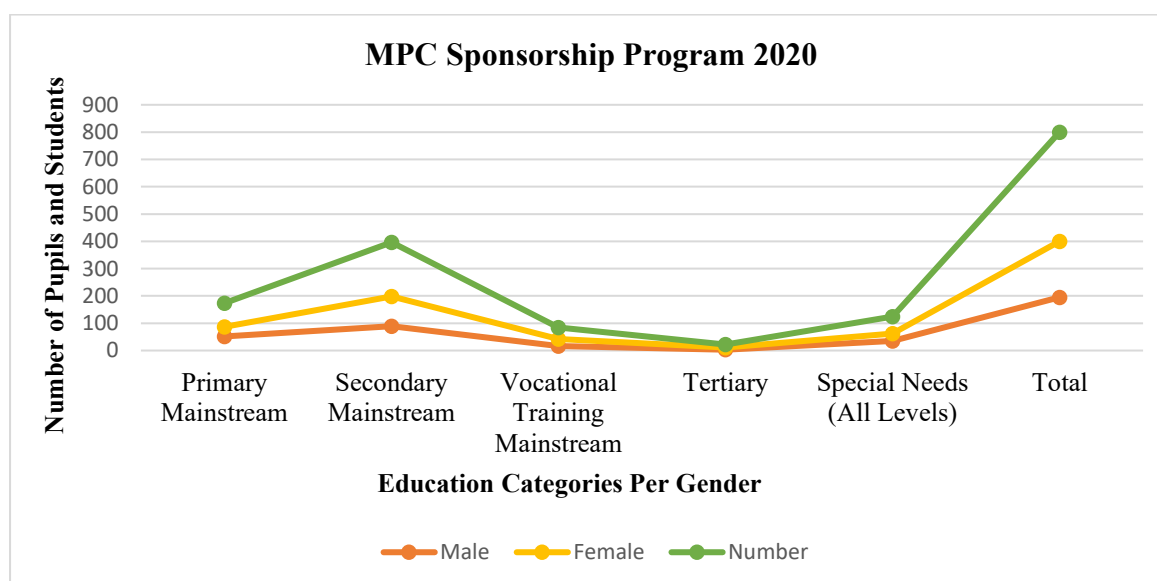
## Sponsorship Program

The sponsorship program continued to assist vulnerable and marginalised children to attend special needs and mainstream schools at primary, secondary, vocational training, and tertiary levels in education.

From the 654 pupils who attended one of the four MPC Primary Schools in 2019, the office held interviews for 80 pupils who expressed an interest in the 2020 sponsorship program. A small percentage received National Schools admissions whereby the Government assisted with tuition fees however most of those schools are prohibitive for parents who struggle to pay the other fees due to a lack of funds resulting in many dropping out of school altogether. The number of MPC sponsored students increased significantly from 277 in 2019 to 400 in 2020. The extra numbers were due to a couple of contributions from Mrs Kurnel, Sisters of Mercy Institute, England and the Fidel Goetz Foundation.

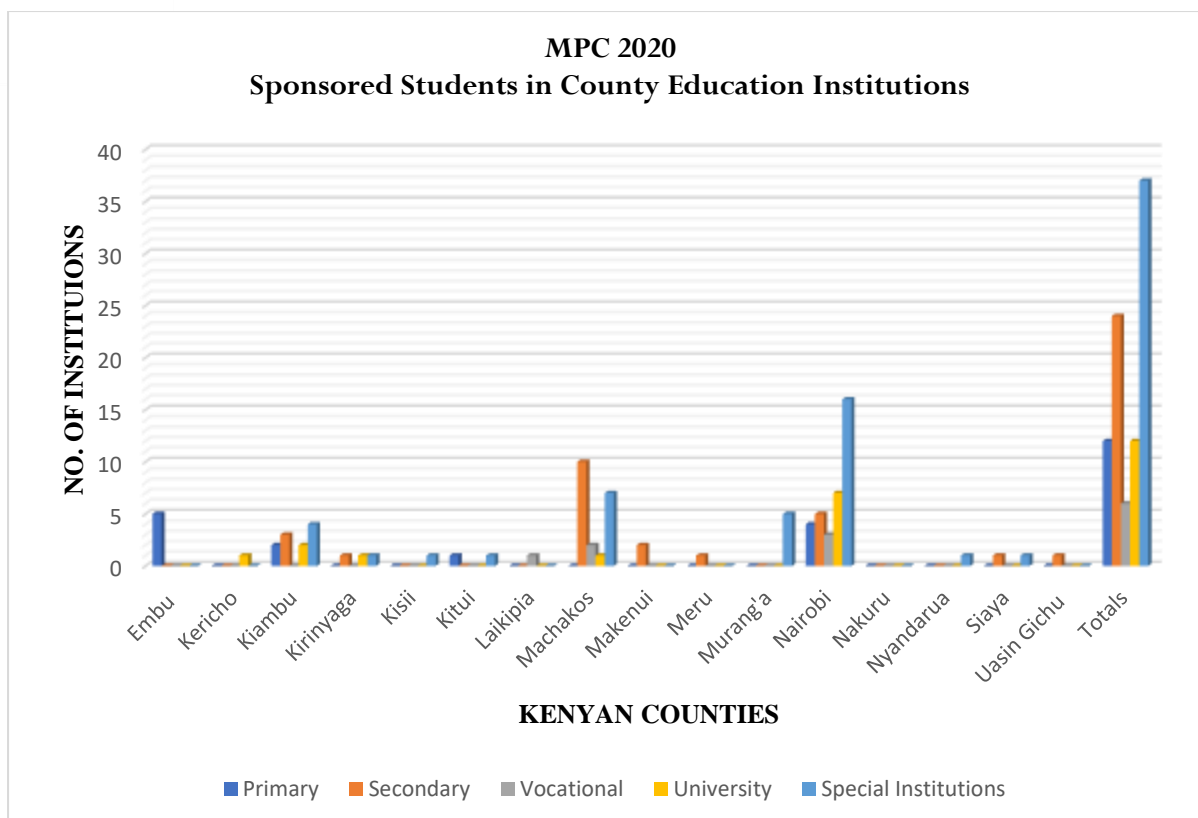
### All Education Level Sponsored Students from 2015 – 2020

Year	2015	2016	2017	2018	2019	2020	Total
No. of Students	270	294	314	269	277	400	1,824



The monitoring and evaluation program provided a lot of insight into the many schools. A stronger connection has been forged since the visit and we are confident that the students are receiving good quality education from those schools. Three schools in particular have marvellous classroom facilities for learning while two were in an undesirable state. The exercise has placed us in a strong position for 2021 sponsorship program.

The pupils and students were enrolled in 61 institutions across 16 different counties: Embu, Nairobi, Kericho Machakos, Kiambu, Kisii, Kitui, Laikipia, Makueni, Muranga, Meru Nakuru, Nyeri, Siaya and Uasin Gichu.



Throughout the year the Sponsorship Office prepared reports for the various sponsors, updated student files, prepared and processed schools fees, issued receipts, admissions, and held interviews, supervised the writing of appreciation letters and academic reports to the respective sponsors as well as organizing the community service program during the holiday breaks. The community service program provided the opportunity for the students to give back to MPC and assist where possible. After enrolments, the students underwent orientation and by March all sponsored students were well settled in their respective schools.

After the closure of all learning institutions announced by the President of Kenya tough times were experienced by thousands. Unfortunately, as a matter of necessity a few students engaged in criminal activities, others were victims of human rights violations and a large number of young girls fell pregnant.

A few of the sponsored students managed to get themselves into the on-line learning platforms in May but the majority did not due to inaccessibility of devices and funds for the data bundles. Term 2 resumed in October for all year levels. Five youths were sponsored with starter kits after graduating from their courses at Our Lady of Mercy Vocational Training Centre.



*Business start-up for a beneficiary*



*St. Michael's Secondary Girls' sponsorship*

## Financial Analysis 2020

### Statement of Comprehensive Income

#### STATEMENT OF COMPREHENSIVE INCOME Year Ended 31 December 2020

	2020	2019
	Kshs	Kshs
<b>INCOME</b>		
Contributions & Donations	67,288,764	62,855,213
Other Income	14,623,401	20,582,542
<b>Total Income</b>	<b>81,912,165</b>	<b>83,437,755</b>
<b>EXPENDITURE</b>		
Personnel Costs	44,001,825	44,013,070
Operating Costs	31,627,909	28,585,905
Finance Costs	188,273	225,400
<b>Total Expenditure</b>	<b>75,818,007</b>	<b>72,824,376</b>
Balance before Capital Expenditure	6,094,159	10,613,379
<b>Capital Income Funds</b>		
Capital Income	41,872,179	4,813,703
Capital Expenditure	35,520,900	9,242,589
Balance from Capital funds	6,351,279	(4,428,886)
<b>Balance for the year</b>	<b>12,445,437</b>	<b>6,184,492</b>

## Statement of Financial Position

	2020	2019
	Kshs	Kshs
<b>ASSETS</b>		
<b>Non-Current Assets</b>		
Property and Equipment	1,249,747,036	1,216,826,004
	<b>1,249,747,036</b>	<b>1,216,826,004</b>
<b>Current Assets</b>		
Fees / Tuition and Other receivables	6,872,915	5,870,011
Trust Investments	13,448,391	13,448,391
Other Investments	15,403,427	9,456,911
Cash and Cash Equivalents	17, 863,574	8,783,764
	<b>53,588,308</b>	<b>37,559,077</b>
<b>TOTAL ASSETS</b>	<b>1,303,335,343</b>	<b>1,254,385,081</b>
<b>FUND BALANCES AND LIABILITIES</b>		
<b>Fund and Reserves</b>		
Capital Assets Fund	1,249,747,036	1,216,826,004
Restricted Funds	16,151,924	3,706,487
General Reserve Fund	13,977,127	13,977,127
Trust Funds	13,448,391	13,448,391
<b>Fund balance</b>	<b>1,293,324,478</b>	<b>1,247,958,008</b>
<b>Current Liabilities</b>		
Other Payables	4,599,065	1,989,798
Provision for Employee Benefits	5,411,802	4,437,277
	<b>10,010,867</b>	<b>6,427,075</b>
<b>TOTAL LIABILITIES</b>	<b>10,010,867</b>	<b>6,427,075</b>
<b>TOTAL FUND AND LIABILITIES</b>	<b>1,303,335,343</b>	<b>1,254,385,081</b>

## Major Grants and Contributors

**Major Grants and Contributions Year Ended 31 December 2020**

(In alphabetical order)

**Grants**

Anonymous	1,252,000	
Brothers & Sisters in Need	2,607,000	
Cheshire Disability Society of Kenya	980,000	
DKA Austria	8,289,396	
eRko Slovakia	4,485,844	
Manos Unidas	2,187,204	
Mukuru Child Wellness Centre	814,688	
Pro Victimis Foundation	520,000	
R D Paterson and Friends	1,308,390	
Spanish Friends	3,043,701	
Trocaire	434,000	
Inigo Barrena Urieta	364,659	
Victoria Charitable Trust	700,000	
Sr Assumpta Walsh and Friends	4,183,750	
Waves Trust	299,771	
<b>Total Grants</b>		<b>31,470,403</b>

**Major Contributions**

Frank & Paula Cullen and Friends	1,584,192	
Friends of Mukuru WA	1,934,751	
Fidel Goetz Foundation	2,464,800	
Fr Helmut Huber MAfr.	1,692,776	
Jerry Killeen Family and Friends	1,387,700	
Lobue and Carmela Salvatore	2,627,295	
Sisters of Mercy, Kenyan Province	1,958,850	
Sisters of Mercy Solidarity Fund, Ireland	4,640,000	
Noreen Walsh and Friends	1,253,906	
<b>Total Major Contributions</b>		<b>19,544,270</b>



**Other Donors**

Africa Direct	373,810
Airtel Networks Kenya Ltd	550,000
Association of Sisterhoods of Kenya	200,000
John & Moira Burns	237,081
Sr Vincent Finnerty and St. Vincent De Paul	500,000
HL-Siftung Joachimstry	260,000
Kenya Wines Agencies Ltd	500,640
Kerry Kenya Ltd	400,000
Sr Mary Killeen and Friends	690,000
MOA Interfaith IRDIS Team	220,000
Dr John O'Brien	292,714
Sr Imelda O'Loughlin and Friends	397,890
Sandro and Martina Paoletti and Family	260,000
Peter & Ger Sreenan	241,264
The 3 Musketeers Childrens' Foundation	367,064
<b>Total Other Donations</b>	<b>5,490,463</b>

<b>Total Other Grouped Donors *</b>	<b>3,105,367</b>
<b>Total Donations In-kind</b>	<b>7,648,263</b>
<b>Total Income for Operations</b>	<b>67,258,766</b>

**Capital Funds Contributions**

Africa Direct	642,414
Audrey Fernandez	155,858
Cheshire Disability Services Kenya	1,653,496
Dr Moanica Palolkova	160,000
Hyacinth Zuzarte	21,800
Manos Unidas	6,492,075
Marcellus Zuzarte	1,060,000
MIVA Austria	3,309,600
Noreen Walsh and Friends	1,342,022
Paula and Frank Cullen	625,422
Carmela and Lobue Salvatore	1,521,065
Sr Ann Doherty and Friends	432,750
Sr Mary Killeen and Friends	960,000
The Kenyan Child Foundation	21,827,925
<b>Total Capital Funds Contributions</b>	<b>40,204,427</b>

Donations In-kind Capital Items	1,667,752
Total funds for Capital Expenditure	41,872,179

<b>GRAND TOTAL</b>	<b><u>109,160,943</u></b>
--------------------	---------------------------

**Other Grouped Donors \* (Details)**

Anonymous Donor	52,128
Ambrose Agbeko	60,000
RCD Arundel Brighton Parish	49,725
Alex Banovich	27,400
Cheril Barich	5,357
Deirdre Bergin	14,400
Mr & Mrs J S Birdi	14,900
Sr Theresa Burke and Friends	30,688
Brendan Burns	147,884
Mark Burns	55,530
Paul Burns	41,000
Sean Burns	74,370
Eileen Cassidy & John Gallagher	67,275
Emmanuel Chebukati	999
Beverly Cheserem	130,000
Centre for Public Health and Development	3,000
Mary Chicago	2,022
Manuel Concalves	14,400
Phillip Dale	2,880
Helen Daly	129,500
Sr Ann Doherty and Friends	144,250
Alan Donohoe	64,000
Sr Barbara Dooley	59,000
Anne Doyle	49,000
Christine Elavoga	5,000
Peter and Maria Farrell	123,000
Elizabeth Mary Gabrielle	29,000
Maria Garcia	5,795
Margaret Gardi	25,500
Martin Githaiga	3,000
Fr Manuel Gordejuela	110,550
Gernot Haider	25,385
Catriona Hargreaves Charitable Trust	151,234
John & Mary Healy	68,150
Frank Kelvin	32,000
Sally Lumadi	3,000
Maasai Mara University	10,000
Gideon Njoroge Macharia	40,200
Jan Maddick	3,345
Margaret Kamuyu Maina	17,000
James Maweu	50,000
JM Mburu Architects Ltd	50,000
Bridget McAteer	32,500

Seamus Molloy	26,646
Sr Sally Mounsey and Friends	142,325
MPC Alumni	70,000
Stephen Ng'ang'a	18,500
Michael Njeru	3,000
Patrick Nyaga	500
OLSG Enfield Third World in Need	28,432
Donie O'Shea	26,880
Joseph Otieno	41,000
Moiria & Jackie Payne	21,600
Mary Purser	13,000
Raja Charitable Trust	132,000
Andrea Reisinger	13,519
Jose Antonio Revuelta San	11,589
Robert's Family	3,210
Michelle Rocchiccioli	75,000
Mrs Saitoti	6,000
Johannes Schwaiger	12,827
Sisters of Mercy, Mazinga Road Community	20,000
SlumAid Limited	29,835
Elizabeth & Hellen Spyropoulos	10,000
St. Martin's Church, England	91,494
Breana Stillman	70,293
Sr Margaret Tallon	3,500
Kirin Taylor	1,648
Satwant Kaur Thathi	40,000
Luiza Vasquez	8,860
Rosemary Wanja	10,650
Whistle - Caroline Cullen	148,692
<b>Total Other Grouped Donors</b>	<b>3,105,367</b>

### Financial Analysis

Comparing the operational costs from 2019 and 2020, some departments experienced increases and others, reductions. Much of the variations were CoVid19 induced and generous donations from partners, supporters and friends.

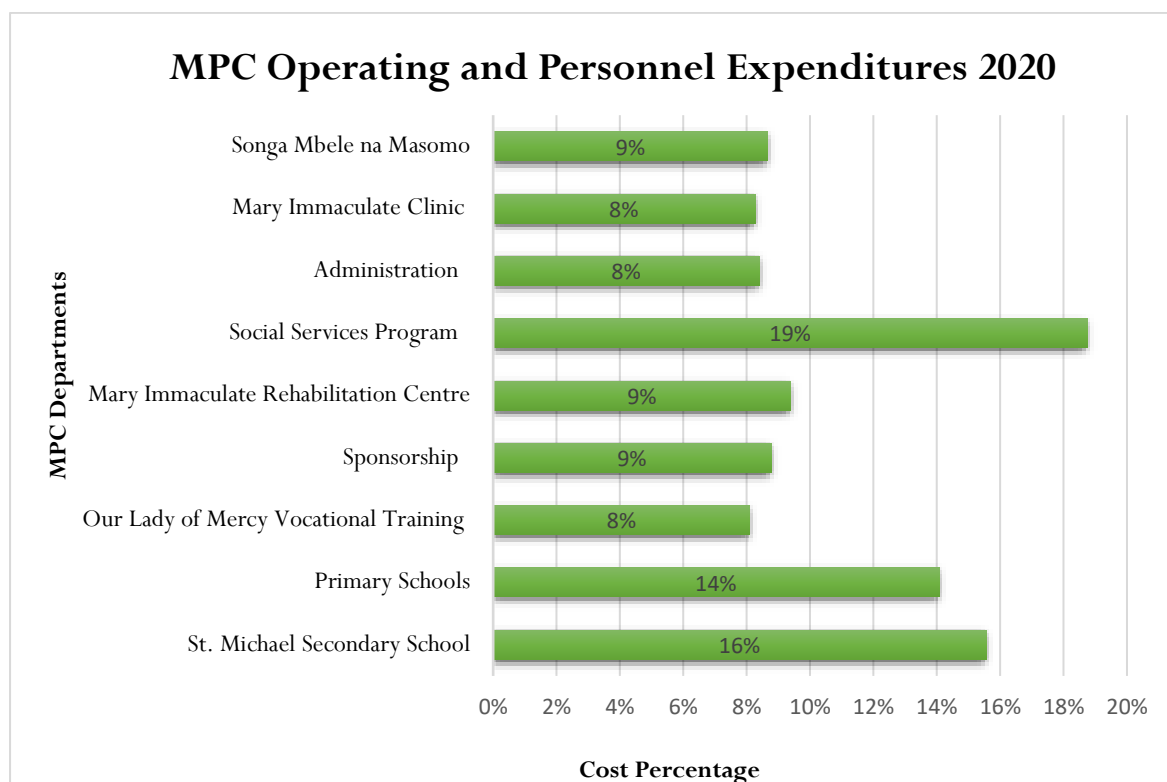
There were increases with:

- Administration up 3.5%,
- Social and Health Services up by 12%,
- Sponsorship by 2%.

The departments with reductions were:

- MPC Clinic down by 1%,
- MPC Rehabilitation Centre by 2%,
- Vocational Training Skills by 1%,
- Primary Schools by 5%,
- Songa Mbele by 2%
- St Michael's Secondary 1%.

As the education institutions were closed for a number of months it is understandable to have reductions in these departments. The department with the highest increase was the Social and Health Services as they responded to the enormous demand for services during the pandemic.



# Asantení Sana

