

Mukuru Promotion Centre

Annual Report

2017

Empowerment Step by Step

Sisters of Mercy Ministry





Artist, Andrew Otieno's recollection of the MPC Head Office Site from 1980s



Front Entrance to MPC Head Office Campus today

Acknowledgements:

Editors: Sr Kathy Kettle, Sr Patricia Moran, Mr Bob Paterson.

Photographs and Contributions: Heads of Departments

Contents

Acknowledgements:	2
Registered Trustees.....	4
Chairman - Board of Management	6
Board of Management	7
Executive Summary	8
Organisational Structure	9
Primary Education	10
KCPE Analysis	10
Teacher Compositions	11
Teacher / Pupil Ratio.....	11
St Bakhita Primary	12
St Catherine's Primary.....	12
St Elizabeth Primary	13
Mukuru Primary School.....	13
Adult Education	14
Adult Education KCPE Analysis per Subject.....	14
Secondary Education	16
St Michael Secondary School	16
KCSE Analysis comparison	17
Vocational Training	18
Our Lady of Mercy Vocational Training Centre.....	18
Course Results	19
Social Services.....	20
Sponsorship	23
Mary Immaculate Clinic.....	25
Mary Immaculate Rehabilitation Centre	28
Financial Accounts Mukuru Promotion Centre	29
Major Grants & Contributions Year Ended 31 st December 2017	31
Support our Empowerment	33

Registered Trustees

It is with immense joy and thanksgiving to God and all the collaborators of Mukuru Promotion Centre that we the Registered Trustees of the Sisters of Mercy can again stand back and count all the blessings for the past year. Amidst many trials and tribulations Mukuru Promotion Centre was able to register many successes through the generous contributions of partners, groups, communities and individuals. To keep the four Primary Schools, St. Michael's Secondary School, the Vocational Training Centre, Mary Immaculate Clinic, Disabilities Centre, the Rehabilitation Centre and the Social and Welfare Services operational is a mammoth task especially on five different sites. Without the support of so many Mukuru Promotion Centre would struggle to be sustainable. For your thoughtfulness and generosity, we are very grateful indeed.

As Mukuru Promotion Centre continues to be a beacon of hope for many people in the slums there are major challenges such as water collection and storage, protection of land from encroachment and grabbers, development of renewable energy and playgrounds for children as well the needs for ongoing education for students and communities around Mukuru Slums. Even with all the improvements in the infrastructures at Mukuru Promotion Centre there is still not enough learning facilities for the thousands of young children in need. There is still a sizable number of teachers required to cater for the uneducated population in Mukuru. Considering our locations in the slums of Nairobi, Industrial Area, we are also faced with many environmental issues that jeopardise our efforts, but we keep moving on with hope.

What happens around the country also impacts on Mukuru Promotion Centre because you will find myriads of tribes, cultures and populations living together in the slums. Kenya is a country of many contrasts. The National presidential elections that took place last year was a watermark in the country. The fact that people were still able to hold together and to continue living together already shows that most people are very peaceful in Kenya. Thankfully, Mukuru Promotion Centre was not badly affected but there is need for civic education in the communities to avoid needless violence.

The country endured an unprecedented doctors' and nurses' strike that went for several months. Regrettably the quality of care impacted more on the poor. With relief Mukuru Promotion Centre's Health and Social Services met many of the challenges in a very tough climate.

In 2017 there were several new statutory requirements needed for the registration of children today. The Sisters of Mercy and especially Mukuru Promotion Centre are committed to the development processes for thousands of people in our care. For over 30 years the Centre has been committed to primary education and with the support of donors' endeavours to empower the community to take an active role in the affairs of the schools.

The status of technical and vocational training is becoming more acknowledged in the education in Kenya. To keep up-to-date with the demands Mukuru Promotion Centre

registered its vocational training programs under the name ‘Our Lady of Mercy Vocational Training Centre’. The recent registration is important because our affordable programs that are skills and competency based will benefit hundreds of learners each year with certified qualifications. We look forward to developing further relationships with businesses in the Industrial Area who can provide opportunities for mentorships and apprenticeships. These are some of the areas that the Sisters of Mercy plan to consolidate so that by the time the students are ready to graduate they are better equipped.

Gradually the system of education is changing from the old 8-4-4 system to the 2-6-6-3 system which focuses on competencies and skills development. This major change is a big boost for our children as it will provide greater opportunities for our students. Many of the children from the slums are very well rounded because of learning to think for themselves and solving problems from an early age. This enhances their creativity and imagination which was not recognised in the 8-4-4 system.

The Mission of the Sisters of Mercy at Mukuru Promotion Centre could not be achieved without the partnership of local and international communities. Together, we are better able to create a transformative force to ensure Mukuru Promotion Centre will be sustainable into the future.



Sr Anne Itotia

Head Trustees,

Sisters of Mercy, Kenya

Chairman - Board of Management

The year 2017 was a challenging year. Politically, we had a national and presidential elections in August. The presidential elections had to be repeated in October. In the economic front, the national economy was depressed due to the uncertainty of the outcome of the elections and the *La Nina* weather phenomenon that resulted in poor food production that necessitated the importation of subsidised maize. In the health sector, there was a six months doctors' strike that paralysed the provision of medical services nationwide. These developments did not spare the Mukuru community. Families travelled upcountry to vote and remained there for prolonged periods. Schools remained closed for an unprecedented period. The community economy suffered as the political stalemate took its toll and as many bread earners lost their jobs. However, by close of the year, the dark clouds had dissipated and there was a glimpse of hope in the horizon for the New Year.

Throughout the year, the Mukuru community remained resilient. The highlights include our primary schools whose enrolment increased by 8% and which returned a sterling performance in the national examinations with 42% progressing to secondary schools and the other 49 qualifying for vocational training. The vocational training centre registered a 6% increase in enrolment and a 90% pass rate in the National Industrial Training Authority (NITA) examinations. The Mary Immaculate Clinic stepped in to alleviate some of the suffering resulting from the doctor's strike by attending to over 21,786 patients in the year. Undoubtedly the pinnacle for the year was the blessing and dedication, on 29th September 2017 (on the feast of St Michael the Archangel), of the new parameter fence and buildings for St. Bakhita primary and St. Michaels secondary. The new compound now stands as a beacon of hope for the Mukuru community.



Onsando Osiemo

Chairman of the Board of Management

Board of Management

Mr Onsando Osiemo (Chairman)

Sr Mary Killeen (Director)

Sr Joyce Oluoch (Trustee Rep)

Mr Ricky Mwendwa

Mr Mike Owiri

Sr Kathy Kettle (Advisor)

Sr Rose Macharia (Trustee)

Mr Bob Paterson

Mr Philip Ogutu

Fr William Moroney

Ms Hilda Ondari

Executive Summary

Dear Partners, Supporters, Donors and Friends,

Thank you, Sisters of Mercy Trustees, Board Chairman and Board members, Government of Kenya, Education County Officials, Missionaries of Africa, our local parish, international and local donors, friends and family who visited us during the year. Thank you to our Heads of Department, staff parents and children. It was a year of great poverty in Mukuru slums due to two elections, demonstrations, closure of some plastic manufacturers and many job losses. Congratulations to KfW Development Corporation and the people of Germany on the completion of two new school buildings – St Bakhita Primary and St Michael's secondary schools.

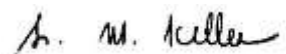
We are in the middle of our strategic plan for MPC and are pleased with the direction and achievements thus far given the known and uncharted difficulties of development. The Centre continues to provide relevant and important services to the very poor. The impact of these programs has been far reaching and of value to the general society.

The year finished with major challenges of water provision, water collection, protection of land from encroachment, developing it for renewable energy and playground use for children and students. May we continue to work together for the benefit of the Mukuru community and our numerous beneficiaries.

Our major challenges as we enter 2018 are raising enough funds to sustain our four primary schools, secondary school, vocational training, social services work, special needs support, clinic and adult education. Water collection storage, sanitation, protection of land from encroachment, development of land for renewable energy, education of students and community are major challenges.

May God and all of you be with us as we work together in development with Mukuru community. Wishing you blessings and remembering you in prayer.

With grateful appreciation,



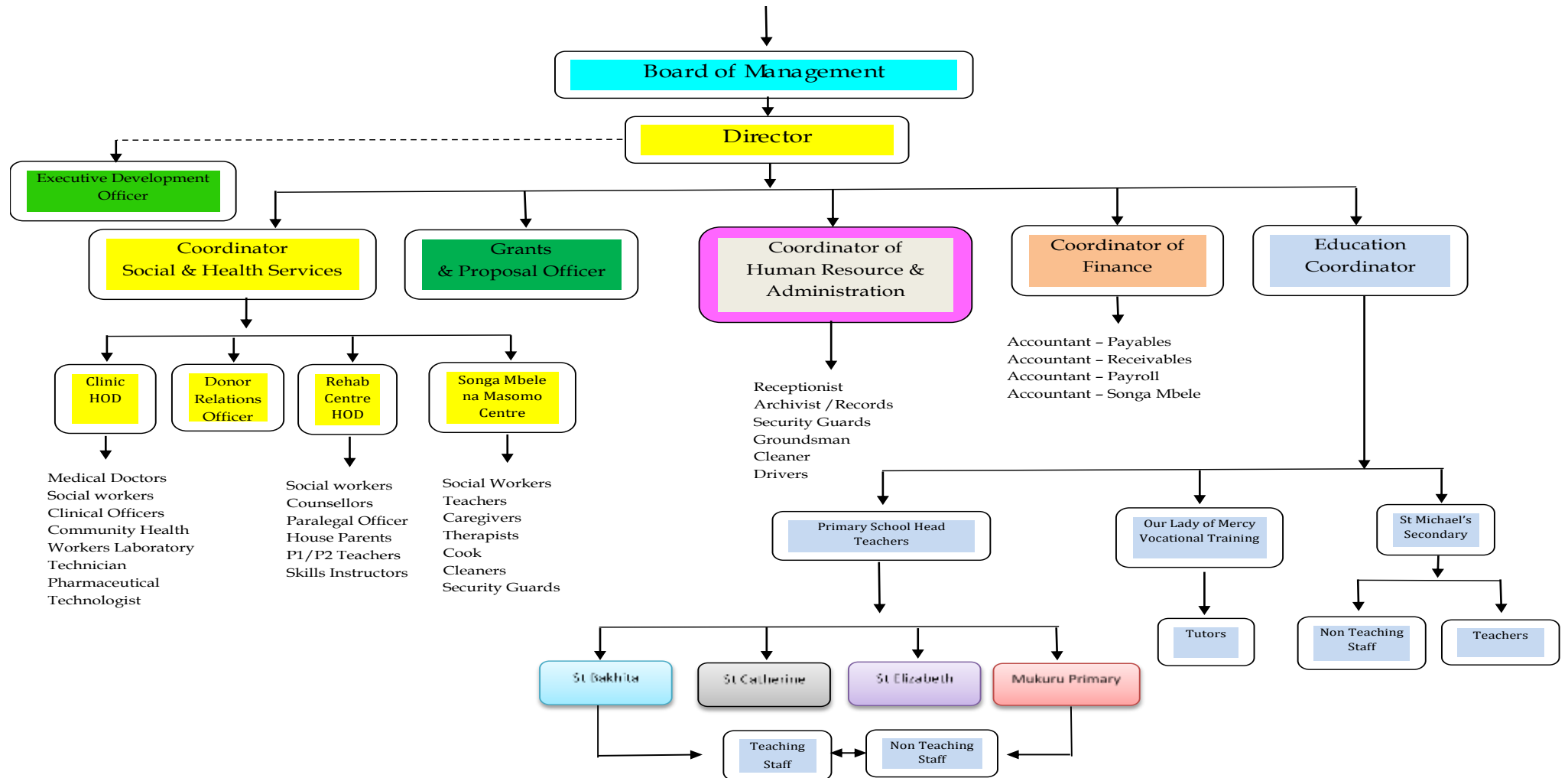
Sr Mary Killeen

Director

Organisational Structure

Mukuru Promotion Centre

Registered Trustees – Sisters of Mercy



Primary Education

Kenya had a national general election in August and then a repeat election on October. The result of these elections did have an impact on our schools as many people went to their home areas to vote. Many stayed in their home regions and did not return to conclude the academic year. Even though there were disruptions MPC achieved some gains in the provision of quality primary education to the children of Mukuru. A high number of learners have been admitted into our schools during 2017. The 4 primary schools (St Elizabeth, Mukuru Kayaba, St Bakhita and St Catherine) had a collective enrolment of 5,524 pupils compared to 5084 in the year 2016. The teacher / pupil ratio given our enrolments equates to 1:61 without MPC and BOM assistance. Thanks to our donors, DKA Austria, Edgely Trust, Whistle – Caroline Cullen, Patrick & Maria Farrell and Mukuru Child Wellness Centre, reduced the number to 1:46. This number is still too high, and we had several meetings with the Teachers' Service Commission and County government to improve the ratio. Hopefully, we trust that 2018 will show the efforts in the reduced ratio.

For over 30 years MPC has been committed to primary education and with the support of donors we will endeavour to empower the community to take an active role in the affairs of the schools. We were delighted to see a 7.96% increase in the enrolment numbers.

School	Class 1-8	Pre school	Total
Mukuru Kayaba	1,634	56	1,690
St Bakhita	782	79	861
St Elizabeth	1,539	154	1,693
St Catherine	1,186	84	1,270
TOTAL	5,141	373	5,514

KCPE Analysis

There were **642** learners who sat for the KCPE examination in 2017 which represents an 11.7% of the school enrolments. The results are shown in the table below. The school with the biggest improvement was St Bakhita.

School	No. Candidates	Total = 500	Average
St Bakhita	100	259.95	51.99%
St Catherine	153	277.92	55.40%
St Elizabeth	178	236.36	47.27%
Mukuru Kayaba	211	253.82	50.76%
Total	642		

Over 41% of the pupils managed to score a C which gives them the eligibility for secondary school. For the other 49% there is the possibility of joining a vocational training course. Last year in 2016, there was 58% or 375 candidates who achieved above the average.

Table: Results above 250 marks in KCPE.

School	Marks > 250	Percentage	Candidates
St Bakhita	46	46%	99
St Catherine	63	41%	152
St Elizabeth	80	39%	204
Mukuru Kayaba	76	36%	210
TOTAL	265		665

Teacher Compositions

Primary School	No of Teachers	TSC Teachers	MPC Teachers	BOM Teachers	Support Staff MPC	Support staff BOM	KCPE: 2017 Candidates
St. Bakhita	23	17	6	0	3	3	99
St. Catherine	32	25	4	3	4	2	152
St. Elizabeth	35	27	8	0	7	10	204
Mukuru	29	21	8	1	2	6	210
TOTAL	119	90	26	4	16	21	665

Teacher / Pupil Ratio

Primary School	No. of teachers	Total Enrolments	Boys	Girls	Teacher / Pupil Ratio	Teacher/ Pupil Ration without MPC & BOM support
St. Bakhita	23	871			1:38	1:51
St Catherine	32	1,270			1:39	1:50
St. Elizabeth	35	1,693			1:48	1:62
Mukuru	29	1,690			1:56	1:80
Total	119	5,524			1:45 average	1:61 average

Mukuru Slums has thousands of young children who ought to be in school learning however there are not enough places for everyone. UNICEF have developed a program titled Watoto Tusome (Kiswahili - Children Reading). The program has merit but there needs to be teachers to affect the program.

We are grateful to the many donors who have made an impact in the lives of parents who can send their children off to school with text books, mathematical sets, stationery, shoes, uniforms sweaters and school bags. All pupils from Standard 1 to Standard 8 received a meal of beans and maize from the World Food Program each day. The program does not cover the pre-primary pupils. The early childhood children (373) received porridge each day from our donor.



Our students continue to shine in the local and regional competitions in art, music and sports. There certainly is an abundance of un-tapped talent in our schools and we hope that the steps we are taking will grow the next generation of cultural, sporting and academic stars.

Charles Ogutu

Education Coordinator

St Bakhita Primary

The start of the academic year was much smoother than previous years as we did not have to contend with construction issues. With an enrolment of 871 students the school was completed in time for January and all the classes and offices occupied...It was beautiful.

The year was full of all the normal functions of school life. We were graced with the presence of the Deputy Governor of Nairobi County, Polycarp Ingathe, when we celebrated the blessing and dedication of St Bakhita and St Michael's. Many other officials came from the County Education office, Trustees of the Sisters of Mercy, Slovak Embassy, Irish Embassy and Australian High Commission, along with invited guests from surrounding schools. The celebration gave the perfect opportunity for the students to show case their gifts.

Mr Silas Okumu

Head Teacher

St Catherine's Primary

Our school had many activities during the year for 1,270 pupils. The pupils performed well in all areas. Year groups participated in local events for sporting competitions as well as bench marking with other schools. We continue to be mindful of our pupils and their needs.

Mrs Isabella Asesa

Head Teacher

St Elizabeth Primary

We received a total of 5 new teachers from TSC this year. Although this has eased on the teacher to pupil ratio we are still experiencing shortage of nine teachers considering we are handling over 1600 pupils. The teacher pupil ration 1:62 without MPC support. Even though we have the challenge of a high ratio the school improved in academics compared to last year.

The highlights in 2017 were that our pupils reached the national level in the drama festivals, received science awards and winning the Kerrigan Cup (soccer) for the boys and the girls were the runners-up.

Mrs Virginia Maina

Head Teacher

Mukuru Primary School

One of the smallest schools in land size but largest in enrolments we are perfecting the art of compartmentalizing our services and needs. We don't have the space of the other Mukuru Promotion Centre schools', but the energy of the children is never diminished. The pupils are delighted to have a school to attend. Our students are very marginalised, and we are very grateful to the Keval Jatakiya group who provided many items such as uniforms, schools bags, mathematical sets, meals and exercise books throughout the year. We also received a refurbished library with reference books from the Turkish sponsored group 'Star Kids'.



Library opening – Mukuru Primary

Mr Nyamai Cyrus

Head Teacher

Adult Education

Since 2008, MPC initiated an adult education component into its operations to help reduce the level of literacy among adults and youth in Mukuru. The program adopted a modified version of the approved syllabus for adult education in Kenya by offering Basic literacy, Post literacy and Adult continuity education (ACE). In addition, specialized courses have been offered in a bid to address /meet the needs of adult learners living in the Mukuru informal settlements. We are grateful for the sponsorship of eRko Slovakia who provide much of the funding for the program.

Enrolments

The 2017 program had an enrolment of 92 learners with a higher percentage of males than females. Given the role of female in society it is understandable that their rate is lower, but more and more are gradually finding the courage to attend classes especially the 26 to 40 year-olds. The most important dimension is the attendance of the learners. In 2017 there was a drop of 8% in attendance and this was attributed to the national election in August and October where people went to their home place to vote.

LEVEL	MALE	FEMALE	TOTAL
Basic Literacy	20	9	29
Post Literacy	20	12	32
ACE (KCPE)	17	11	28
Unregistered KCPE	1	2	3
TOTAL	58	34	92

Age Distribution of Learners

AGE	MALE	FEMALE	TOTAL
18 - 25 Years	17	11	28
26 - 33 Years	20	12	32
34 - 41 Years	12	11	23
42 and Above	9	0	9
TOTAL	58	34	92

Adult Education KCPE Analysis per Subject.

Year	Candidates	Maths	English	Kiswahili	Science	Social Studies / CRE	Mean
2014	20	33.50	32.35	35.90	27.65	34.55	163.95
2015	27	31.81	37.41	35.19	34.46	31.73	171.00
2016	21	34.52	34.52	31.71	25.52	26.05	152.33
2017	33	33.46	36.40	32.61	33.21	34.75	172.39

There was an increase in candidates for KCPE in 2017. There was a mixture of results with some subjects obtaining a higher mean than the previous year. The 2 most significant subjects were Science and Social Studies / Christian Religious Education.

The Adult Education program held its first Alumni Association meeting during the year. The beneficiaries of the program were able to share their success stories and the impact of education in their life despite the challenges with the current learners.

Boniface Sitima

Senior Teacher (Adult Education)



Secondary Education

St Michael Secondary School

The academic year commenced on 3rd January and concluded on 24th October 2017 with the national examination, KCSE that started on 6th November and concluded 29th November 2017. St Michael's were hosted at St. Bakhita for the first half of first term and then moved into our new school. The new buildings were blessed and dedicated on 29th September 2017 on the feast of St Michael the Archangel, where the deputy Governor of Nairobi, Polycarp Ingathe, graced the occasion along with other dignitaries.



The staff composition includes 16 teachers and 6 non-teaching staff. This gives the school a teacher / student ratio of 1:25.

Students Enrolled	Boys	Girls	Total
Form 1	60	46	106
Form 2	57	44	101
Form 3	66	35	101
Form 4	45	44	89
Total	228	169	397

Throughout the year we concentrated on the holistic development of our students through academia, moral formation and co-curricular activities. The moral formation program involved the introduction of pastoral lessons, catechism classes for Catholics and increase of Masses from 1 to 3 per term. The school choir was reformed and led the singing for the celebrations.

We introduced Career Guidance classes and academic strategy meetings for all classes with some parents attending. The school mean for 2016 was 4.37 but this year it dropped to 3.81. Although we had the best intention, clearly more needs to be done so that our students have the option to attend university.

In extra-curricular activities our cross-country team reached the regional level while the basketball, volleyball, netball and football for both girls and boys reached the sub-county level. As a school we also had inter-school activities such as sports, cultural and talent days for the students.

A third of our students at St Michael's receive sponsorship from around the world as well as some from Kenya. We are grateful for the sponsorships as it provides opportunities for students

whose families would not be able to afford an education. The MACHEO program from Strathmore University supported 8 students in their academic program. Other supporters who donated items were: Weetabix Ltd, GlaxoSmithKline, Airtel and Barclays Bank.

There were many workshops and seminars for both students and teachers which were facilitated by the Mercy Education Office, Coptic Hospital and Mavuno Church. Our students also enjoyed several other educational trips for Set books (English Literature); Mang'u High School for the mathematical contest; business studies symposium at Buruburu Girls and an excursion to Kel Chemicals in Thika for our Form 4s.

One special trip was to the President of Kenya's official residence, State House where 8 of our Form 4 students went.



State House Visit

KCSE Analysis comparison

The number has resulted in 6 students being eligible for university in 2017 as opposed to 9 in the previous year.

Year	A+	A	B+	B	B-	C+	C	C-	D+	D	D-	E	No.	Mean
2015	0	0	0	6	7	8	12	7	3	1	0	0	44	7.02
2016	0	0	0	0	2	7	8	14	21	15	8	0	75	4.37
2017	0	0	1	2	1	2	4	12	23	26	17	1	89	3.81

There are many people involved in trying to help our students obtain opportunities for a bright future. We are grateful for their assistance and hope that 2018 will provide greater success.

John Chege

Ag. Principal

Vocational Training

Our Lady of Mercy Vocational Training Centre

The year commenced with enrolments for the different courses and within the first week there were over 160 students ready to commit to programs and over 30 students who had started their industrial placements. The enrolments for 2017 were slightly higher than the previous year with an 6% increase. The increase was mainly in the very popular Catering Course.

Course	First Intake	Second Intake	Third Intake	Total	Incomplete
Computers	53	29	18	100	4
Hairdressing	36	18	N/A	54	4
Catering	35	N/A	N/A	35	2
Plumbing & Masonry	17	N/A	N/A	17	3
Garment Making	12	N/A	N/A	12	3
Art & Craft	10	N/A	N/A	10	1
Total				228	17

In March, the Class of 2016 along with their families and friends celebrated their graduation at MPC. Many of those students who had completed their attachment had already gained employment.



Class of 2016 Graduation



Skills Exhibition

During the year Skills had 2 exhibitions to showcase the students' learnings and the skills they had developed. Throughout the year the students received opportunities to demonstrate their skills in catering, dressmaking, hairdressing, art, plumbing and masonry. The students managed to sell some of their products to invited guests and visitors on the days. One of the highlights for the catering students was preparing and serving the celebratory meal for the

blessing and dedication event of St Bakhita, St Michael's schools. The Art students gave the Skills 'Pride' Restaurant a face lift. The students also continued with their card and craft work.

Course Results

All our students in garment making, plumbing and masonry who sat the 2017 National Industrial Training Authority (NITA) examinations passed. Often the students who do not sit the exams have found employment during the year or there were other circumstances which meant that they could not attend the examination. In its first year, the plumbing and masonry students scored 93%. The Computers, Art & Craft and Catering courses are not examinable by NITA however they did have internal examinations. All the catering, arts & crafts students passed while 2 students in Computer Studies did not pass the exam.

Course NITA Examinations	No. students booked for exam	No. who sat the exam	No. who did not sit the exam	No. students who passed the exam	No. of students who failed the exam
Hairdressing	39	35	4	31	4
Garment Making	8	8	0	8	0
Beauty	17	16	1	14	2
Plumbing	15	14	1	14	0
Masonry	15	14	1	14	0
TOTAL		73	6	67	6

Course Internal Examinations	No. students booked for exam	No. students who sat exam	No. who did not sit for exam	No. students who passed the exam	No. students who failed the exam
Computer	88	88	0	86	2
Arts & Crafts	10	9	1	9	0
Catering	34	33	1	33	0
Totals	132	130	2	128	2

We look forward to offering excellent quality education for those who wish to develop their skills. We are grateful to our donors and well-wishers for the continued support in 2017 and we will endeavour to improve in 2018.

Peter Mwangi

Head of Department

Social Services

The year 2017 proved to be very full of many daily activities. Various interventions were given to the clients; some cases were referred to other partners for further support. The Standard 8 Classes Assessments for the 550 KCPE candidates and their home visits were a significant undertaking. The purpose of this activity is to ensure that the pupils have the best possible opportunity to attend high school (Form 1). At the end of the year the social workers are in the perfect position to identify all the needy cases for sponsorship. There were 120 profiles prepared for Form 1 from the very needy students.

Under the Social & Health Services Department, 52 children and youth living with disabilities, attended a one-on-one meeting with their parents/guardians for them to know the progress of the learners. This exercise happens twice a year as well as two home visits for all of them under the specific Cheshire Disability sponsorship program.

The department planned and implemented a successful 'Ring a bell' campaign on 22 March at St. Elizabeth Primary School regarding "disabilities". The campaign raised awareness by informing the community about the challenges faced everyday by those who live with disabilities and how very important inclusion is for them. The campaign takes place every year for the partners who are selected to participate through Cheshire.

Over 35 youths above 18 years living with disabilities were mobilized and assessed during the year for training and work. Through Cheshire Disabilities Ltd / Liliane Fonds, Mukuru Promotion Centre helped identify the youth who may be able to undertake training and develop skills for job placements. Titled the "Employ-Able" program, we are delighted that the sponsors have chosen Mukuru to support those in our community living with disabilities.

The number of sick children / clients was very high and over 500 cases were referred for minor illnesses. Out of the 500 cases 20% were chronic medical situations where the clients attended specialized hospitals and the social workers made follow-ups to ensure the clients had fully recovered or they were able to manage the disease by attending their clinics as required by the doctors. There are many cases that require specialised medical attention and we are always looking at ways to support the parents / guardians. One particular child is called baby Griffin who is under constant medical care.



Baby Griffin

11months old girl who has skin problem and a mass at the back of her head. She is currently following clinic at Mater hospital. The child has Mild Down Syndrome, Albinism and Physical Challenges.

The direct outreach projects from the 4 primary schools provided much benefit for our clients:

1. Our amaranth program continues as we served over 130 clients living with HIV/AIDS and those whose immune system is very low from chronic illness, have benefited from the amaranth flour.
2. Over 1,000 most needy and vulnerable families who face food insecurity have benefited from the Emergency feeding program, clothes and beddings given to the families.
3. 60 malnourished children receive food supplements during the year, the supplements help in boosting the health of the babies.
4. Over 200 children who were out of school for more than 3 months received help to be enrolled back into school. Most of the children drop out of school due to poverty which leads to lack of fees, food, basic needs, crimes, negligence from parents/guardians.
5. Over 6,000 children / youths from our schools and education institutions attended different formational talks on Child Protection, Human Trafficking, Disability and Inclusion, Sexuality, Community-based Rehabilitation, Hygiene, Child Responsibility and how to refrain from abusing drugs and staying away from illegal cults. Parents were also given the opportunity to participate in the talks throughout the year.
6. The social workers continued the necessary follow-ups on pupils, students, adult learners, and teenage mothers. There were unfortunate cases of 41 child abuse, 21 rescues, 21 trafficked children.
7. Over 350 students / clients received counselling / guidance throughout the year
8. Over 340 orphaned and vulnerable children were identified and assessed and given support by MICATO Safaris.



Pupils and parents receiving food donation



Pupils MICATO Safaris



Over 800 Food parcels provided by Keval Jatakiya Family



Needy mothers receiving baby clothes



One of the St Bakhita Formational Talks

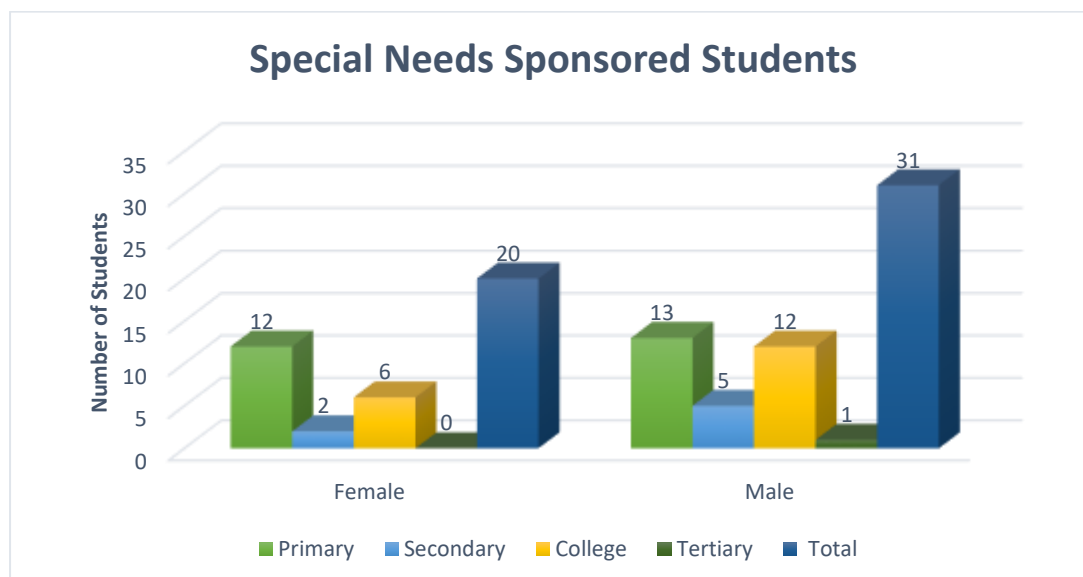
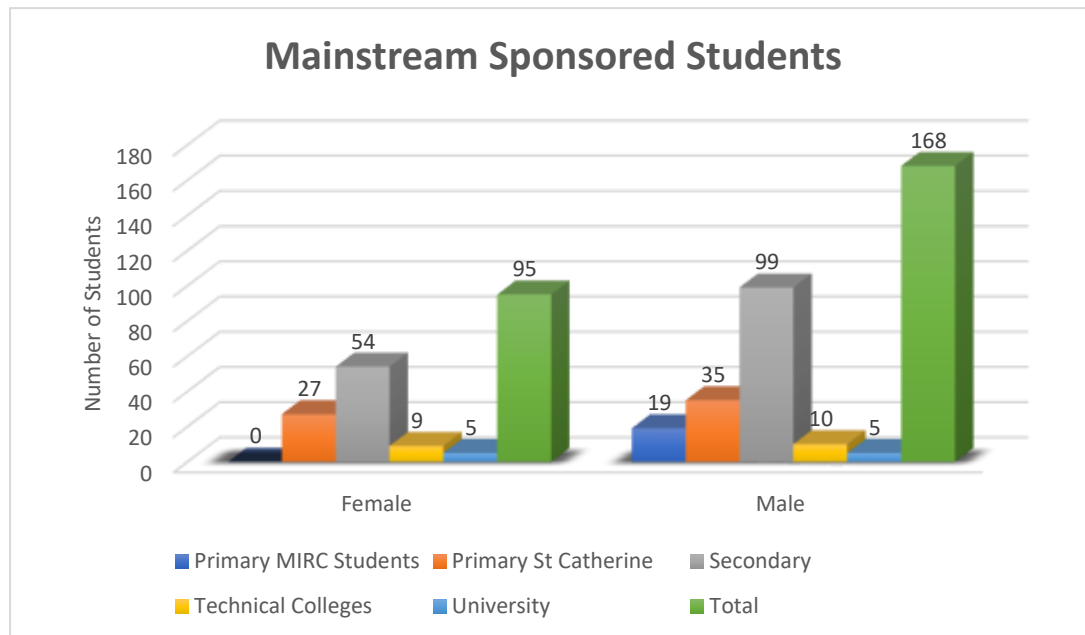
Lucy Obiri

Head of Social Services

Sponsorship

Sponsorship is an exciting opportunity to make a difference to the lives of young people. The number of beneficiaries in the 2017 sponsorship program was 314 which was a 6% increase from 2016 where we had 294 students. There were 2 university graduands and 44 Form 4 students who sat their National exams (KCSE).

The graphs below give a breakdown on the number of 2017 sponsored students at the different education levels for mainstream and special needs students.



The gender balance is still favouring the boys (192) to the girls (115). The special needs students had a more balanced ratio than the mainstream students. A probable reason for this is the importance placed on boys' education. This is an area that we are trying to address in the

program. There were several special needs students who sat their KCPE in the mainstream schools in 2017. The inclusivity of the special needs students helps them find that they have more in common with other kids than they thought. This goes a long way to reduce the stigma for students with learning and attention issues, and helps them to build and maintain friendship with the students in the mainstream schools.

There are many elements that goes into the sponsorship program. One of the key factors that assist the students is the peer mentoring project that MPC provides. Mentoring offers an opportunity for the students to be responsible role-models and develop positive public spirit. It also impacts positively by delivering higher completion rates, improved attitudes, academic motivation and achievement, improved social skills and behaviour, stronger peer and family relationships, increases the sense of belonging and reduces the risk of involvement with drugs.

The project was well attended by students as the MPC multi-purpose hall was full to capacity. The students listened to visiting lecturers from various universities in Nairobi.



Sponsored students at the peer mentoring day

Throughout the year there were several visitors and donors who met with their sponsored students and spent some time with them.



Special thanks must go to Mr Shah and Mr Keval Jatakiya Families for providing lots of donated items to the students throughout the year. The students received food parcels, shoes, stationery, exercise books, mathematical sets, and school bags.

We would like to sponsor all children but know that this would be an impossible task. We are aware of the challenges that face our pupils / students. Therefore, our sponsorship categories reflect this disparity. The needy cases of orphans, single parents, or sick parents are always given priority.

Jane Akumu

Donor Relations Officer

Mary Immaculate Clinic

Our main objective for the year was to ensure timely, quality, efficient and effective services to the residents of the Mukuru slums and to enhance on the capture of data produced in the Clinic. Throughout the week the clinic is organised with a focus for each day.

The clinic attended to over 21,786 patients for 2017. Over 55% of the patients were represented by women at 12,068 visits and the remaining 45% were males at 9,718.

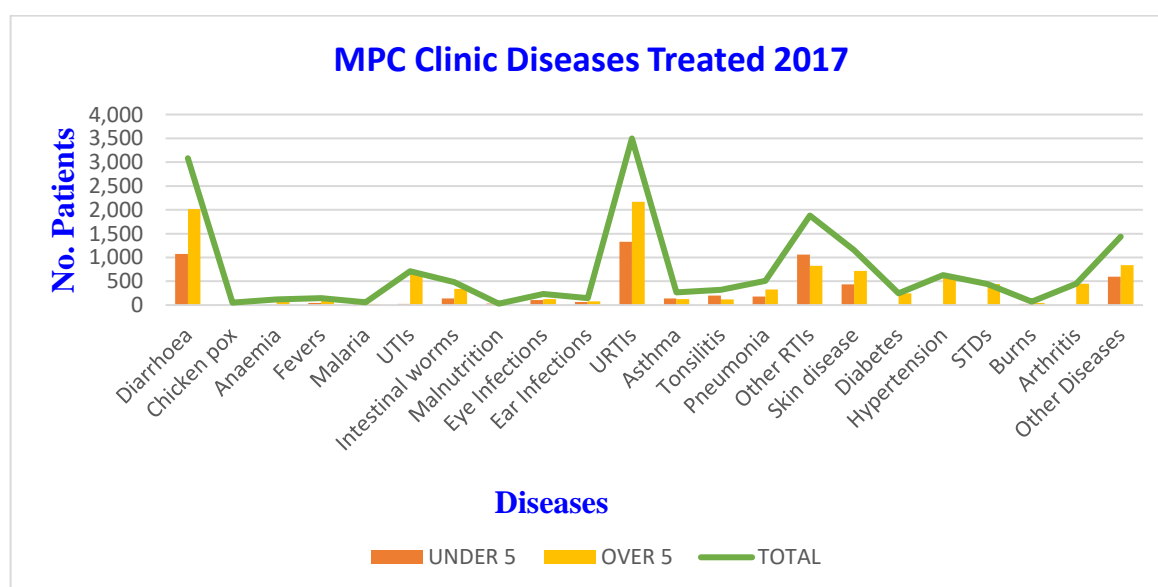


We recorded an increase of patients due to the 6 months country wide doctors and nurses strike that affected the public health sector. The major illnesses treated were diarrhea, respiratory tract infections, intestinal worms, skin disease and urinary tract infections being the top five diseases. The child vaccination program was successful with a total of 3,445 children vaccinated.

The clinic averaged over 100 patients per day. To manage a high number, it is helpful for those who utilise the services to know which day to attend for a particular disease as we have occasional specialists who volunteer their services. The different days **Monday:** General, **Tuesday:** Child Welfare Vaccinations, **Wednesday:** ANC Antenatal, **Thursday:** HTN / HDM – Hypertension and Diabetes and **Friday:** General and Child Welfare.

The Clinic's 'Home Based Health Care' (HBHC) program within the Mukuru slums focused on helping those who cannot make it to the Clinic due to distance, age or infirmity. The Clinic has 9 outstations after closing Paradise due to sanitation issues. The Clinic formerly had two nurses but due to funding, we are unable to employ a replacement. Most cases are asymptomatic with the top five diseases being respiratory infections (due to its proximity to industrial area that emits a lot of gases), diarrhoea (due to poor hygiene caused by inadequate drainage and water scarcity) and urinary tract infections caused by a lack of sufficient latrines.

Table: Treated Diseases



The Clinic's Nutrition Centre attends to an average of 200 children per month. These children suffer from malnourishment and non-breast feeding due to parent deaths or underage mothers. The children are given supplements that include plumpy nuts, powdered milk and special porridge to boost their immunity and to ensure that they have a good growth curve.

The year was also marked with a lot of activities that helped us to achieve our goals for the year. The Clinic had its second hernia surgery operations in January (30th to 6th). Over 500 children from Mukuru slums were screened and 14 successful surgeries performed by the lead paediatric surgeon Dr Karen Cartwright and coordinated by Dr Karen Schneider.

The Clinic was privileged to host the President of the Republic of Slovakia on the 14th of February 2017. The President was very pleased with the work that MPC does at the Clinic and donated Kshs 500,000 (\$US 5,000) that helped with the purchase of medication, and equipment for the surgical room. The Slovak team promised to continue partnering with MPC and send volunteer doctors to the Clinic. During 2017 the Clinic received 4 volunteer Slovak doctors, Dr Lenka, Dr Ivan Szabo, Dr Veronika and Dr Lucia. The doctors have been a great support to the Clinic.

The Clinic hosted a very successful medical camp supported by the Rotary Club on the 25th of March that saw over 1200 people from the Mukuru slums treated. The Rotary Club also donated the remaining drugs to the Clinic after the camp. The Club president also pledged to construct a ramp for wheelchair patients at the Clinic.

The Clinic was fortunate to host several people throughout the year such as the Slovak explorers who donated an ophthalmoscope and the TG4 (an Irish film crew) who donated emergency response kits, stethoscopes, oximeters, BP machines, thermometer and suturing sets.

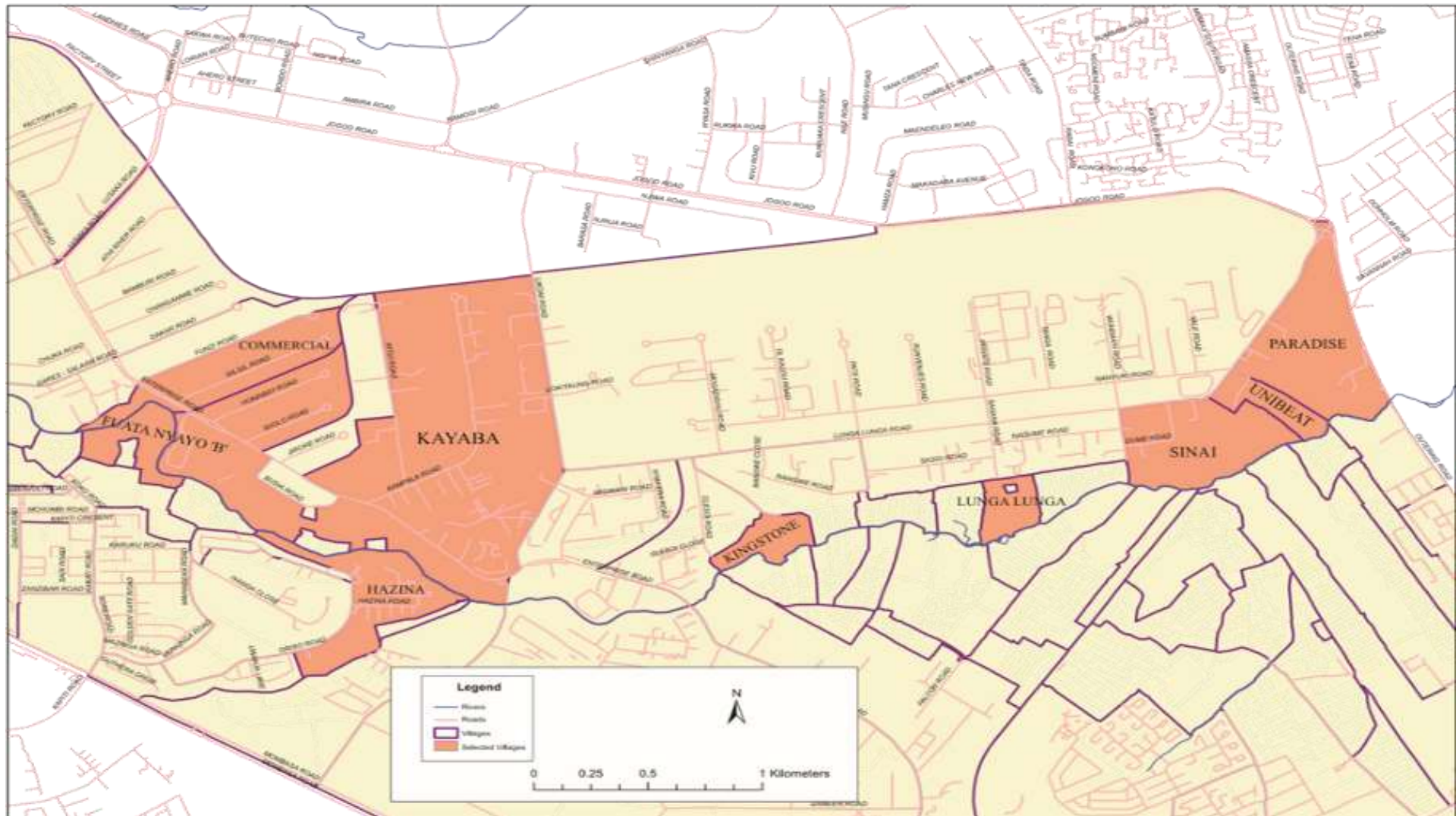


Irish Television Station TG4 film crew

The Clinic could not operate without the support received from The Victoria Bank Charitable Trust Fund for their generous monthly funds to purchase medications and salary support for 1 nurse and 1 laboratory technician. The Mater Misericordiae Hospital, Nairobi provides specialist assistance for our hypertensive and diabetic patients each Thursday. Dr Nina, a gynaecologist, has been volunteering at the Clinic for 2 years and specialises in cervical cancer screening.

Winnie Majiwa
Head of Department

MUKURU SLUM



Outstations are highlighted in dark orange.

Mary Immaculate Rehabilitation Centre

Fifty boys from 2016 were successfully reintegrated into their families, schools and in local companies in the surrounding Industrial Area. In January 2017 the centre commenced its recruitment from Pipeline, Diamond, Mutindwa, Kware / Donholm, South B, South C, Wilson and Mukuru slums. In total 76 boys were invited to participate in the program however 26 went back onto the streets and a small number were referred to specialist centres.

The program continued with its holistic approach towards social rehabilitation with 49 boys who had settled, were taken for their medical check-up. The boys were divided into 3 education groups: Year 1, Year 2 and Technical and those whom were assessed for Standard 8 ability were registered for KCPE exams under the Adult Education Program. Two students managed very high marks in the KCPE being 402 and 309 out of the possible 500 marks. For students who have not attended formal classes like the other 2017 candidates these marks reflected their abilities to produce when given the opportunity to join formal schools. The boys experienced several excursions to broaden their knowledge of wildlife, conservation, life skills and their country. They also participated in workshops on sexuality, drug and substance abuse, values of life, discipline, crime and gangs. The MIRC scout group at the Centre continues to be strong at competitions while the soccer team came third in the Kerrigan Cup.

The Centre provided training in areas that included self-awareness, dimensions of child development, caregiving, parenting skills, stress management, guidance and counselling, interpersonal communication, building healthy relationships and behaviour management over the 12 months.

One of the essential elements of the program is home tracing. In the first half of the year over 20 cases were completed within Nairobi and another 9 outside the capital. In the second half of the year a further 33 home traces were completed. It is very important to involve the parents as much as possible in the reintegration process and throughout the year there were several meetings hosted.

The construction of the new educational facilities at the Centre commenced late August. The new facility will have 2 large workshops, 2 classrooms, 2 counselling rooms and offices. The workshops will be equipped with modern carpentry and technical tools to assist the boys in developing their skills to be 'work place' ready. The new facility would not be possible without the support of the donors: Manos Unidas, Fr Liam Hickey and Friends, Patrick Curran Memorial Trust, Bank of Ireland Staff Fund, Garda Third World Fund and Frank & Paula Cullen. The building is scheduled to be completed in May 2018.

Each year there are new challenges to be faced for success to be achieved. Each group presents a new set of challenges due to the circumstances and ordeal of each boy and the rate and level of trust. Even though there are trials in social rehabilitation, we cannot lose focus on the difference it makes to individual lives.

Silas Cheserek
Head of Department

Financial Accounts Mukuru Promotion Centre

STATEMENT OF COMPREHENSIVE INCOME Year Ended 31st December 2017

	2017	2016
	KES	KES
INCOME		
Contributions & Donations	67,619,129	44,353,609
Other Income	16,880,842	15,396,723
Total Income	84,499,971	59,750,332
Expenditure		
Personnel Costs	38,578,949	40,368,776
Operating Costs	26,162,953	27,927,798
Finance Costs	193,334	618,950
	64,935,237	68,915,523
Balance before Capital Expenditure	19,564,734	(9,165,191)
Capital Expenditure	12,175,403	1,731,100
Balance / (Deficit) for the year	7,389,331	(10,896,291)

STATEMENT OF FINANCIAL POSITION

Year Ended 31st December 2017

	2017	2016
	KES	KES
PROPERTY & EQUIPMENT		
Property and Equipment	1,198,694,939	1,194,352,576
	1,198,694,939	1,194,352,576
CURRENT ASSETS		
Receivables	2,707,266	1,847,340
Trust Investments	13,448,391	13,448,391
Other Investments	11,821,775	15,432,170
Cash and Cash Equivalents	11,716,923	6,313,121
Total Current Assets	39,694,355	37,041,022
CURRENT LIABILITIES		
Payables	10,267,993	9,919,112
Provision for Employee Benefits	5,350,861	5,035,526
Total Current Liabilities	15,618,853	14,954,638
Net Current Assets	24,075,502	22,086,384
Net Assets	1,222,770,440	1,216,438,960
REPRESENTED BY:		
Assets Fund	1,198,694,939	1,194,352,576
Designated Funds	11,416,950	12,921,736
General Reserve Fund	(789,840)	(4,283,743)
Trust Fund	13,448,391	13,448,391
Total Funds	1,222,770,440	1,216,438,960

Major Grants & Contributions Year Ended 31st December 2017

Bank of Ireland Third World Fund	1,665,000
Brothers & Sisters in Need	2,431,907
DKA Austria	4,614,072
Donations - In kind	8,583,146
Edgley Trust	1,152,000
eRko Slovakia	1,632,243
Friends of Mukuru, Western Australia	1,385,845
Irish Guards (Garda)	2,287,000
Manos Unidas	2,991,507
Missionaries of Africa – Germany	4,811,147
Mr Keval Jatakiya -Topin Industries	1,997,033
Mukuru Child Wellness Centre	3,446,859
Patrick Friel Curran Memorial Trust	2,781,804
Paula Cullen & Irene Plunkett	1,051,803
R Paterson & Friends	1,487,534
Sancta Maria College - Dublin	1,697,191
Sisters of Mercy, Kenya Province	5,000,000
SlovakAid	1,172,675
Sr Assumpta Walsh & Friends	1,322,770
Sr Mary Killeen & Friends	2,292,914
Victoria Bank Charitable Trust	1,300,000

TOTAL **55,104,449**

Other Donors

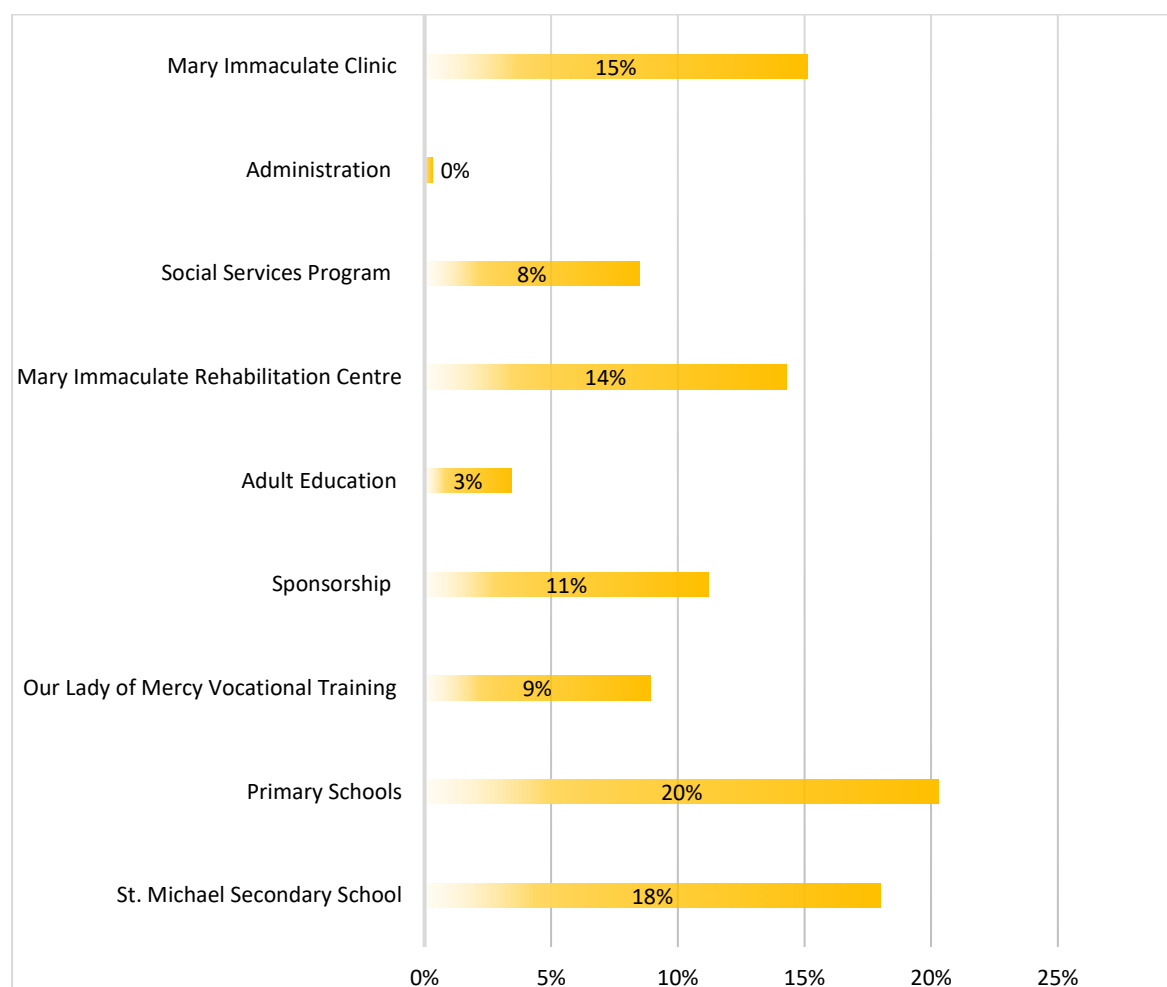
Africa Direct	115,473
Airtel Networks	549,000
Brendan Graham	188,667
Calary Church Co. Wicklow	426,059
Whistle - Caroline Cullen	424,346
Cheshire Disability Society of Kenya	738,902
Dr Robert Fisher	155,775
Fr Gerald Tanham	122,571
Fr Liam Hickey & Friends	611,850
GlaxoSmithKline (GSK)	100,000
Ismail Rahimtulla Trust	298,440
John Bamford	286,689
John Hoff	573,031
Kindermissionswerk	979,864
Mercy Solidarity Ireland	704,400
Missionaries of Africa – Washington	914,500
Mr Mansukhlal K Shah	500,000

Patrick & Maria Farrell	290,026
Pedro & Stella Urieta Guijaro	976,167
Peter & Ger Sreenan	232,148
South Central Province Justice	109,300
Sr Angela Hartigan & Friends	361,783
Sr Elizabeth Devine	135,500
Sr Noreen O'Sullivan	135,611
Sr Sally Mounsey & Friends	156,117
Trocaire	278,893
Waves Trust	714,444
TOTAL	11,079,556

Other Grouped Donors 1,435,124

GRAND TOTAL 67,619,129

MPC Operational Expenditure 2017



Support our Empowerment

Donate on-line: www.mercymukuru.co.ke

Below are details of what your donation can provide:

5 Euro

- Provide vaccinations for Children
- Drawing materials
- School Socks

10 Euro

- Primary School Uniform
- School Bag
- School Shoes
- School Jumper
- Scientific Calculator

20 Euro

- Complete School Uniform (uniform, bag, shoes and jumper)
- Provide food for a primary child for a week
- Stationery items for school
- Soccer (football) ball

30 Euro

- Eye glasses
- Community Health Volunteers Allowance for a month.
- 13kg Gas bottle – provide 3 months cooking for family
- Purchase 2 ring Gas cooker

50 Euro

- Primary school “extra fees” for firewood for a year
- Provide rent for two months in a shanty

60 Euro

- Provide a family of 4 with food for a month

80 Euro

- Exam fees for secondary school
- Hospital treatment for a child - general

100 Euro

- Provide art materials for a term
- Provide training for Community Health Workers

125 Euro

- Exam fees for Vocational Training courses
- Vocational Training Courses: hairdressing, plumbing, carpentry, computer packages and hospitality.

150 Euro

Provide educational textbooks for the year

- Paediatric hernia operations

200 Euro

Provide shelter for a “trafficked” child for 1 month (shelter, counselling, food and education).

- Provide day secondary education for a year

500 Euro

- Provide boarding secondary education for a year

600 Euro

Child Rights Lawyer per month