



Mukuru Promotion Centre

## Annual Report

2016



*Empowerment*

*Step by Step*



### Acknowledgements:

Front cover design: Andrew Otieno MPC Art Instructor.

Editors: Sr Kathy Kettle, Sr Patricia Moran, Mr Bob Paterson.

Photographs and Contributions: Heads of Departments



## Contents

Acknowledgements: .....	2
Registered Trustees.....	4
Chairman - Board of Management .....	6
Board of Management .....	7
Executive Summary .....	8
Organisational Structure .....	9
Primary Education .....	10
KCPE Analysis .....	10
Teacher / Pupil Ratio.....	11
Teacher Compositions .....	11
St Bakhita Primary .....	12
St Catherine Primary.....	12
St Elizabeth Primary .....	13
Mukuru Primary School.....	13
Secondary Education.....	14
St Michael Secondary School .....	14
Vocational Training .....	15
Our Lady of Mercy Vocational Training Centre.....	15
Social Services.....	17
Adult Education .....	18
Enrolments .....	18
2016 Distribution of Learners .....	18
Averages of KCPE Candidates from 2013 - 2016.....	19
Averages of KCPE Subject Analysis from 2013 - 2016 .....	19
Adult Learners attend one of the workshops and weekly classes.....	20
Sponsorship .....	21
Mary Immaculate Clinic.....	24
Mary Immaculate Rehabilitation Centre .....	27
Financial Accounts.....	30
Donors .....	32
Support our Empowerment .....	36



## Registered Trustees

Mukuru Promotion Centre (MPC) has grown over the years from just a Centre in the 1980s to a complex organization over the years. From the Millennium Development Goals to the Sustainable Development Goals (SDGs) one can easily see how MPC capacitates its local community and beyond through its various programmes. The First SDG addresses the need to end poverty at all levels. Through the MPC programmes in education, health, rehabilitation of street children, sponsorship programs, skills development and social work it is apparent that Mukuru Slums has been transformed from a poverty-stricken community to a still poor but active and alive community today. Thousands of children and families have gone through the hands of MPC. Today there are prominent persons in government, international communities, local and Church institutions who have gone through the MPC programs.

The forth SDGs addresses the need for inclusive and quality education and the promotion of lifelong learning. MPC has spear headed this since its inception. In the four primary schools, the secondary school and the vocational – technical education all ages of children and young adult finds open doors at MPC. This is supported by the strong believe that education is one of the most important building blocks for the healthy development of any society. At MPC education capacitates people with skills, knowledge and competencies that are essential for life. Faith development and gaining of positive attitude in life is a value that is emphasised at MPC as a Church led institution.

The Health Program is core to MPC. This is also in line with the SDGs three. Ensuring healthy lives and promoting well-being for all ages also goes hand in hand with SDGs six. This calls for access to water and sanitation for all. Considering that MPC is central to Mukuru Community one cannot fail to notice how the works have touched the community. The MPC of the 80s is quite different today but the needs are many. Mary Immaculate Clinic strives to cater for people who are most disadvantaged in the community with affordable cost. Education is still needed in the areas of safe water and sanitation in the Mukuru Slums because of its very location at the heart of Industrial Area. Community based health enables MPC to reach those in the Community that require medical attention and nutrition.



In Kenya, the menace of street children became endemic in the 1990s. MPC found ways of responding to that need by opening its doors to the rehabilitation of street children. This facilitates many to get back to their family and to continue with their education. Some of the children acquire skills. MPC supports them to get industrial placement. By responding to such needs the circles of poverty is also minimised.

The Mission of the Sisters of Mercy at MPC could not be achieved without the partnership of local and international Community. This is in line with the 17<sup>th</sup> goal of the SDGs which talks about revitalising the global partnership for sustainable development. This is an important part of the story of MPC because without global partnership the facilitation of the work would not be made possible. The registered Trustees appreciate all people who make it possible for the mission and ministry of Mercy to prosper. Together, we are better able to create a transformative force that to ensure MPC will be sustainable in the future.

Sr Anne Itotia

Provincial Leader, *Sisters of Mercy, Kenya*



## Chairman - Board of Management

Mukuru Promotion Centre (MPC) is a beacon of hope for the disadvantaged community of Mukuru slums and surrounding areas. Under the dedicated sponsorship and guidance of the Sisters of Mercy and the generous contribution of our donors, MPC continues to mitigate the effects of abject poverty in Mukuru slums through the intervention of its programmes. The education programme has continued to grow through its primary and secondary education, vocational training and adult education institutions. Cognizant of the tough environment in which the community is located MPC, through its social services programme, has intensified counselling services to both teachers and students in all its institutions. In order to address the "street boys social problem", operations at the rehabilitation centre for street boys have been revamped to include home searches, home visits, counselling, education, reintegration and placements. To mitigate the effects of poor health and lack of medical care in the community the medical clinic has been renovated and enhanced to provide laboratory services, a pharmacy, VCT screening, home based health care, clinicians and doctors consultations.

In 2016 MPC embarked on its strategic plan for the next five years. It was a learning and bonding experience for the whole MPC community from which we emerged much better focused on our vision and mission. The MPC compound along Likoni road underwent major reconstruction that saw St Bakhita Primary and St. Michael's secondary transformed into modern schools. All our numbers were up in 2016. More children enrolled in the schools. More students sat for their national examinations. More students were sponsored. More street children were rehabilitated. More patients were treated. And more money was spent. Thanks to these interventions, the Mukuru community was a better place than previously and there were more smiles and more hope in the community.

All these services to the community would not have been possible but for the tireless efforts of the Sisters of Mercy, our partners in government and the community and our generous donors and contributors.

However, MPC continues to face financial challenges. The needs of the community are ever increasing while, on the other hand, the resources are limited. From a positive financial balance in the year 2015, MPC slipped into a deficit in 2016. We continue to pray and hope for positive interventions to avoid scaling down our operations.



On behalf of the Board of Management and the entire MPC community, i would like to thank the Sisters of Mercy, our donors and contributors, our partners, our staff members and the Mukuru community for their dedication and cooperation that has enabled MPC to achieve its objectives and to meet its targets. It is my prayer and hope that this cooperation will continue to flourish into 2017 and beyond.

Onsando Osiemo

*Chairman of the Board of Management*

## Board of Management

Mr Onsando Osiemo (Chairman)

Sr Mary Killeen (Director)

Mr Philip Mutisya

Mr Ricky Mwendwa

Sr Kathy Kettle (Advisor)

Sr Rose Macharia (Trustee)

Mr Bob Paterson

Mr Philip Ogutu

Fr William Moroney



## Executive Summary

Dear Friends and Donors,

Thanks very much for your support during the year of 2016. From the beginning of the year we worked on our strategic plan for the next five years. All the staff and stakeholders were involved in reviewing the former plan and proposing changes to be implemented in the new plan. We had a staff audit, which enabled us to see the strengths and weaknesses of our present staff and the areas where we needed change. According as the plan is implemented we will find out how well it is working.

The appearance of our plot on Likoni Road changed utterly with the replacement of the semi-permanent mabati buildings with stone buildings thanks to the German KfW Development Cooperation Bank and the co-operation between Sisters of Mercy, the County of Nairobi, and the German and Kenyan Governments. Both Primary and Secondary were accommodated in the new Primary building while the secondary school was under construction. It is wonderful to see it all taking shape. We had big challenges from the local community who moved the river over endangering our plot by reclaiming land. A retaining wall had to be built to protect the land, the school wall and buildings.

Although the economy of Kenya is growing, the poverty in slums seems to have increased. The October rains failed so that the price of food went up. One third of our pupils began to look malnourished. It was very important to ensure that all students got at least one meal a day at lunch time. The World Food Programme who provide lunch for Mukuru primary schools, made a change in policy which meant they supplied food only to primary and not to pre-primary and nursery children or to the street boys. A local donor was already providing food for St. Mary's Viwandani Secondary, St. Michael's Secondary, Our Lady of Mercy Vocational Training Centre. He agreed to take on board those who were omitted. For this we are most grateful and the students were saved from malnutrition.

Financially, 2016 has been our most challenging year to date. The Board proposed strengthening our fundraising /resource department, which was done. May the Lord bless you abundantly for your support during 2016, which was vital for MPC. Together we have enabled the Mukuru community to access services in education, health, training, social services and counselling which empower them to take their place in development and improve their economic status.

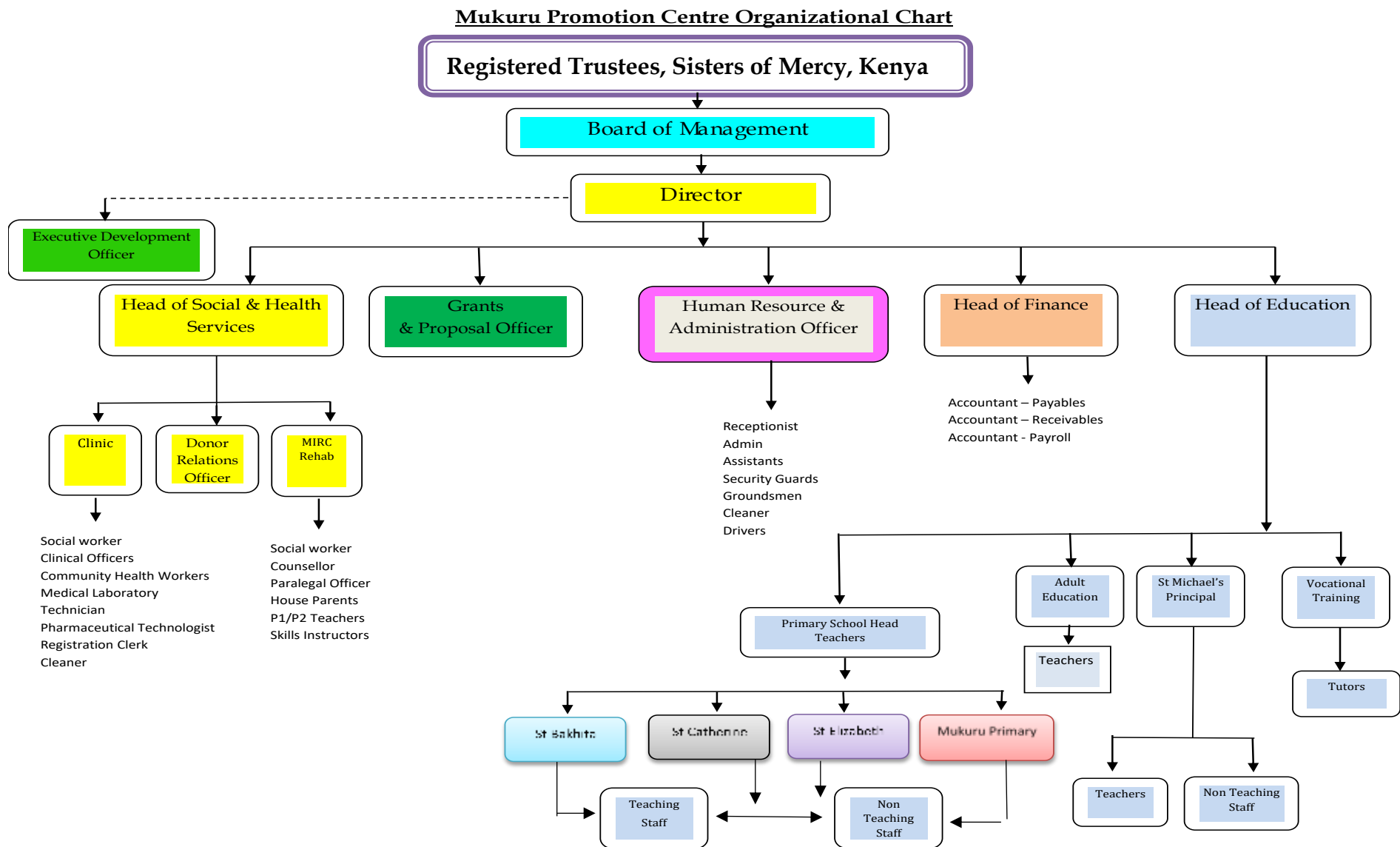
With grateful appreciation,

Sr Mary Killeen

*Director*



## Organisational Structure



## Primary Education

Our Mukuru community with over 5,000 children in the four primary schools were assisted to improve their level of education and learning. Attending school each day comes with many challenges for our students. Mukuru Promotion Centre ensures that the dignity of all the children who go through our schools is upheld. We have endeavoured to provide students with the necessary tools to contribute positively in their communities. All the schools have support services such as social workers, counsellors and career guidance to help achieve the best possible outcome for the students as they travel along their educational journey. Our students have to contend with more than the usual issues of schooling. The environment that our students come from is very complex with entrenched poverty, domestic violence, drug gangs, exploitation and diseases to contend with. Their struggles are numerous, however, their passion for education is unmatched.

### KCPE Analysis

There was an increase in the number of students sitting the Kenya Certificate of Primary Education from 647 in 2016 compared to 554 candidates in 2015. It is our hope that this trend will steadily increase over the next few years. This time primary parents celebrated their child/rens' results before Christmas. The maximum KCPE score is 500 marks. The performance of KCPE in our four primary schools was as follows:

**Table of Results: Total Marks = 500**

School	Marks >250	%	Candidates
St Bakhita Primary	71	65.7	108
St Catherine Primary	123	78.8	156
St Elizabeth Primary	94	43.9	214
Mukuru Primary	87	51.5	169
<b>TOTAL</b>	<b>375</b>	<b>58.0</b>	<b>647</b>

We are appreciative of our teachers and pupils for the increase to 58% in those who scored 250 plus marks, compared with 41.3% in 2015. Three schools increased their mean scores so the bar has been raised for 2017. Thankfully we can report a good gender balance in the enrolments. This is a good indication of equity in admission in all the 4 primary schools. The table below provides further information on the enrolments and staffing at the schools.



## Teacher / Pupil Ratio

Primary School	No. of teachers	Total Enrolments	Boys	Girls	Teacher / Pupil Ratio	Teacher/ Pupil Ratio without MPC & BOM support
St. Bakhita	25	928	438	490	1:37	1:49
St Catherine	31	1,255	622	633	1:40	1:57
St. Elizabeth	35	1,405	684	721	1:40	1:61
Mukuru	32	1,496	721	775	1:48	1:68
<b>Total</b>	<b>123</b>	<b>5,084</b>	<b>2,465</b>	<b>2,619</b>	<b>1:41</b>	<b>1:59</b>

## Teacher Compositions

Primary School	No of Teachers	TSC Teachers	MPC Teachers	BOM Teachers	Support Staff MPC	Support staff BOM	KCPE: 2016 Candidates
St. Bakhita	25	19	6	0	3	2	108
St. Catherine	31	22	6	3	5	5	156
St. Elizabeth	35	23	11	1	7	1	214
Mukuru	32	22	8	2	2	6	169
<b>TOTAL</b>	<b>123</b>	<b>86</b>	<b>31</b>	<b>06</b>	<b>17</b>	<b>14</b>	<b>647</b>

We want to appreciate all donors and well-wishers who continue to support our schools. Salaries is a major expense in any school and MPC schools are no different. We are fortunate to have a few donors who contribute to the salaries as well as food, clothing, excursions and tournaments which means that we can provide extra services for the children so that they can complete their primary education.

Our schools have participated in internal music competitions and county level sporting events in which all our primary schools reached regional levels. There is an abundance of un-tapped talent in our schools and we hope that the steps we are taking will grow the next generation of cultural, sporting and academic stars.

**Charles Ogutu**  
*Head of Education*

### St Bakhita Primary



After 27 years in mabati classrooms with mud flooring, our students will move into the new permanent structure in January 2017. The partnership between the Sisters of Mercy, KfW Development Cooperation - Germany, the Kenya National Government and County Education has made the new learning environment possible. Many people have worked tirelessly in this achievement especially the 200 plus Kenyan workers. There were many challenges during the

construction phases but now we have a wonderful conducive learning environment for the nine hundred strong enrolments and 37 staff members. We hope to increase our enrolment numbers in 2017.

**Mrs Roseline Otom Mito**  
*Head Teacher*



### St Catherine Primary

Over 1,200 students received their new Head Teacher in Term 3, Mrs Isabella Wanjiku Asesa. My first major task at the school was to ensure the smooth running of the national laptop program. The National Government announced that all primary schools in Kenya would receive laptops. To secure the anticipated arrival of the laptops for Standard 1 pupils each school was required to reinforce the computer laboratory rooms. The officials conducted the E-READINESS inspection on 13<sup>th</sup> October 2016.

The usual business of primary education continued throughout the year with workshops, seminars, exams, sporting activities and excursions. Unfortunately, St Catherine's land dispute is still unresolved. This issue impedes future development for the school.

**Mrs Isabella Asesa**  
*Head Teacher*

### St Elizabeth Primary

The 2016 academic year has provided similar challenges for the operational dimension of the school. We continue to battle with flooding due to illegal dumping of soil into the nearby river. Since opening in 1991 the school has overcome countless obstacles such as staff shortages, drugs and substance abuse issues amongst pupils, water shortages, security shortages, sewerage spillages, and breakages. We are grateful to DKA Austria and Mrs Young from Adelaide who have provided funds for a culvert to be built to address the flooding issue. We await the official approval from the County regulators. Despite these challenges, St Elizabeth's Primary School has grown into one of the most vital institutions in the Mukuru district. Our school choir is ranked in the top five in the sub county and graduates of the school have gone on to study at University level. Our Alumni Association is gathering momentum as our past students are making contributions to the school.



#### **Mrs Virginia Maina**

*Head Teacher*

### Mukuru Primary School

Located in the heart of Mukuru Kayaba slum, Mukuru Primary, hosted the Austrian film crew sponsored by DKA Austria, a long-time supporter of Mukuru Promotion Centre. Over 1,400 pupils were excited to see how a documentary is made. The first of the MPC schools that commenced in 1985 has provided hope to thousands of children. The national education figures claim that only 44% of primary students will attend and complete secondary school. Providing some basic education is so critical to people living in the slums. Mukuru Primary, that started under a tree has gone from strength to strength and given advancement to many. Like all schools in the slums we have lots of challenges but it does not deter our resolve to provide empowerment to the children.

#### **Mr Nyamai Cyrus**

*Head Teacher*

## Secondary Education

### St Michael Secondary School

The academic year commenced on 5<sup>th</sup> January and concluded on 28<sup>th</sup> October 2016 for the KCSE national examinations. Throughout the year we have had a holistic development approach to quality education and provided equal importance to co-curricular activities like cultural programs, sports and physical education. The school relocated to St. Bakhita's permanent buildings to pave the way for the demolition and construction of the new secondary buildings. Since then the new school has taken shape and is to be occupied sometime in 2017. The 2015 KCSE results had a mean of 6.545, in 2016 the school achieved a mean of 4.37 which was down considerably on the previous year. We hope that the mean will improve in 2017, notably. We have set our target to 8.0.



The faith formation program at the school included Masses, catechism classes, liturgical singing and sacramental programs for the different year groups.

St Michael's was privileged to have bench marking exercises for the Form 3s and Form 4s with Our Lady of Mercy Girls Secondary School. Motivational talks by Airtel group, KCB (Kenya Commercial Bank) and Mercy Education also took place as well as students' conferences held at The Catholic University of East Africa on drugs and substance abuse, sexuality & HIV/AIDS and chastity among others. The countless meetings continued ranging from Annual General Meeting, Parents Teachers Association, Heads of Department, and School Clubs which were held over the year.



St Michael's had a successful year with sports and culture. Both the boys' and girls' volleyball teams finished second in Makadara sub-county. Students from all the classes, Form 1 to Form 4, participated in the ball games competition organized at the school premises. These included basketball and volleyball. Our cultural day was a success with all students showcasing our rich cultural heritage.

We would like to thank the students, parents, teachers, management, sponsors & well-wishers for all the enhanced support and encouragement in maintaining exacting standards of education and discipline in our school.



**Gilbert Njeri**  
*Ag. Principal*



## Vocational Training

### Our Lady of Mercy Vocational Training Centre

In 2016 over 200 students reached their goals in obtaining a qualification certificate in the various courses offered at MPC. The student enrolment across the year is as indicated in the table below. During the year students do experience challenges that result in withdrawing from their courses. However, overall there were 24 students who were not able to complete their courses although given every assistance to do so.

COURSE	Jan	May	June	Sept	Total	Drop Outs
Computer Packages	63	27	-	19	109	4
Hair Dressing & Beauty	27	-	19	-	46	6
Catering / Hospitality	23	-	-	-	23	3
Plumbing and Masonry	20	-	-	-	20	5
Art	17	-	-	-	17	0
Garment Making	16	-	-	-	16	4
<b>Total</b>	<b>165</b>	<b>27</b>	<b>19</b>	<b>19</b>	<b>230</b>	<b>24</b>

The month of December was the moment of truth for many students as they sat their examinations. The catering class finished their final exams by 1<sup>st</sup> December 2016 and proceeded to their industrial attachment. The Hairdressing, Garment Making, Plumbing and Masonry students completed their National Industrial Training Authority (NITA) exams between 5<sup>th</sup> – 16<sup>th</sup> December. The Art class finished later as they also concentrated on painting and decorating the new art gallery. They were issued with certificates of completion for the course.



To develop sustainability in some of the courses our students engaged in income generating projects. These included: catering for outside groups; offering hair and beauty services to clients; paintings and material bags. The students from each course displayed their products and services during the scheduled exhibitions during the year. The exhibition attracted staff members, parents, friends, students and supporters. The exhibition also served as an opportunity to advertise their services and created awareness about the vocational training centre.



*Items that were showcased and sold during the exhibition*

Given the disadvantaged backgrounds of our students many face quite a few hurdles just to attend classes. Our students in 2016 were given the opportunities for individual and group counselling. This new initiative was received extremely well. The sessions facilitated new perspectives and insights on life and how to deal with daily challenges positively. We hope to continue with this initiative along with developing new ones for 2017.

**Clare Kerubo**

*Head of Department*





## Social Services

The social services provided by MPC are wide and varied, covering all the four primary schools, St Michael's secondary school, Mary Immaculate Clinic, Mary Immaculate Rehabilitation Centre, Our Lady of Mercy Vocational Training Centre and MPC staff. The services include:

- Child Protection
- Human Trafficking Awareness
- Prevention and Processing
- Individual and Group Counselling
- Guidance Counselling; and
- Drugs and Substance Abuse Awareness.

Our social workers are kept fully occupied. Motivational and educative talks like career development and healthy living were some of the topics that were presented by the social workers to primary and secondary students.

To assist the sponsorship program each social worker conducts a series of interviews throughout the year on every Standard 8 pupil plus a home visit. This program helps the sponsorship team to make sound decisions on the neediest of students who require sponsorship to secondary school. We started the interviews in 2015 and have discovered that the Standard 8 interviews have revealed why the pupils perform moderately in the end of term exams due to the constant challenges they face at home throughout the year. In 2016 there were 613 pupils who registered for KCPE in the 4 MPC schools. The home visits give the social workers a chance to talk to the parents of the pupils and ask them to be vigilant in the protection of their children. It also helps in the follow up on cases of absenteeism and child neglect.

There were 11 cases of neglect, cases of child labour, early marriages and 15 cases of abuse, 41 cases of social issues reported to the local authorities, and the parents / guardians received counselling and the necessary interventions. In the sexual abuse and rape cases we received assistance from Medecins Sans Frontieres (MSF).

There are 51 children in the special education program. Our social worker visits the home and schools of the children with special needs to check on their academic and rehabilitation progress. The designated social worker is sponsored by Cheshire Disability Services Kenya who provide great support for the special education program. The special needs program is constantly evolving as we identify more and more children from the slums who are living with disabilities.

The nature of slums provides the recurring issue of fire and flooding accidents. In 2016 there were 90 recorded cases of fire victims who required food and clothing.

**Irene Nyaosi**  
*Head of Social Services*



## Adult Education

The poverty level in Mukuru slums is very high and as a result parents cannot afford to educate themselves and their children beyond basic levels of education. When faced with 'life or death', education is hardly a priority as there are real survival issues that need to be addressed and most youth do not make education a priority.

Adult education program is one of the programs offered by MPC. The main objective of the program is to reduce illiteracy among adults and out of school youth drop outs. For several years MPC has partnered with eRko Slovakia to provide the program to adults and youths. There are assorted reasons why young people drop out of school or for some adults who have never attended, however one of the most common reasons is funding. Many of them trying to survive roam around the slums and end up on drugs, alcoholism, gangs, prostitution, early and short-lived marriages. The Adult Education program provides an avenue for them to pursue a basic level of education and promote a lifelong learning to enable them to become self-reliant.

## Enrolments

There has been a marked improvement in the attendance of the learners in 2016 and we hope that this trend will develop further. Results are always a good inspiration for people.

The table below shows class enrolments, average attendance and KCPE candidates' registration for the past four years.

Year	Enrolments	Average attendance	Percentage of Attendance	KCPE Registration
2013	65	41	63%	12
2014	85	48	56%	20
2015	112	55	49%	29
2016	<b>92</b>	<b>60</b>	<b>65%</b>	<b>22</b>

## 2016 Distribution of Learners

Level	Male	Female	Total	Pass Rate %
Basic	24	13	37	40%
Post Literacy	20	10	30	33%
ACE [KCPE]	14	11	25	27%
<b>TOTAL</b>	<b>58</b>	<b>34</b>	<b>92</b>	<b>100%</b>

On average, there are always more males taking advantage of the adult education program than females. Many of the male learners in the program work as night guards in nearby industries which allows them time during the day to attend classes. Most of the women learners are single parents and widows who spend their time searching for casual jobs in the nearby estates. Teachers encourage both men and women to enrol in the program and make the course as friendly as possible. They are asked to commit to an hour a day for learning and then go about doing their businesses. Teachers and social workers also outreach through women groups' and chief barazas (meetings). Like the men, the women also have a challenge in providing the basic needs for their children, hence restricting them from attending the classes.

#### Averages of KCPE Candidates from 2013 - 2016.

Year	No. of Candidates	Mean / Averages
2013	12	141.2
2014	20	163.9
2015	27	166.8
2016	21	152.3

The above table summarises overall performance in KCPE and the number of candidates who sat for exams in the past four years. The table will enable teachers to evaluate themselves and come up with new strategies in improving the performance for the following years.

#### Averages of KCPE Subject Analysis from 2013 - 2016

Mean	No. of Candidates	Maths	English	Kiswahili	Science	Social Studies / CRE	Total
2013	12	28.5	31.6	31.2	25.6	23.9	141.2
2014	20	33.5	32.35	35.9	27.65	34.55	163.95
2015	27	31.81	37.41	35.19	34.46	31.73	171
2016	21	34.52	34.52	31.71	25.52	26.05	152.33

The subject analysis provides vital information for MPC to assist in the planning and placement of resources for the program.

The Centre has three teachers who manage the three different classes: the basic literacy, post literacy, adult education and KCPE. Most of the learners move from the post literacy course to KCPE course with the aim of obtaining the national education certificate. This enables them to pursue advanced vocational skills e.g. motor mechanics.

The program provides many benefits to the people of Mukuru as the Centre is open to anyone who wishes to acquire basic literacy / numeracy skills at no cost. The younger people receive a second chance to pursue academic certification. More so, small business operators can now acquire basic business skills hence enhance their businesses. Some learners come into class just to learn a skill to enable him /her to secure a job; others obtain unskilled employment due to the fact that they can read and write. The number of illiterate people within the village is slowly reducing thanks to the Centre and the support from eRko Slovakia.

**Boniface Sitima**

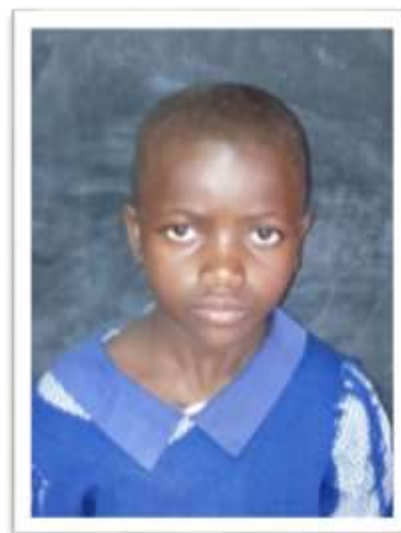
*Senior Teacher (Adult Education)*



*Adult Learners attend one of the workshops and weekly classes*

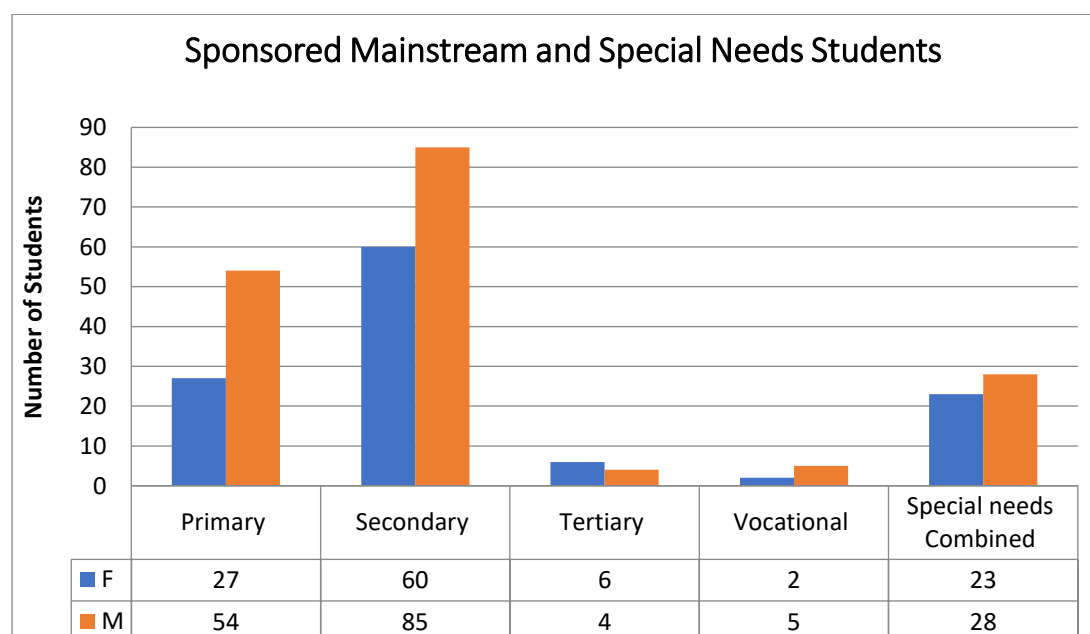
## Sponsorship

We have many people around the world who assist and partner with MPC in empowerment through education. There was an 8% increase in 2016 sponsorship compared to 2015. Our 294 beneficiaries range from 4 years of age to 60 years, from primary schools, secondary, vocational, universities and informal education. Due to the prohibitive costs of living, many slum children cannot go to school. They often have to work to contribute to the family income. In addition to missing education and social benefits of going to school, they are vulnerable to abuse, exploitation and succumbing to addiction. The most affected students were sent to boarding schools.



The first week in January consisted of many selection interviews for sponsorship. There were 10 sponsored students in different universities and 7 in vocational schools, 145 students attending secondary school and 81 in primary schools and 51 special needs students.

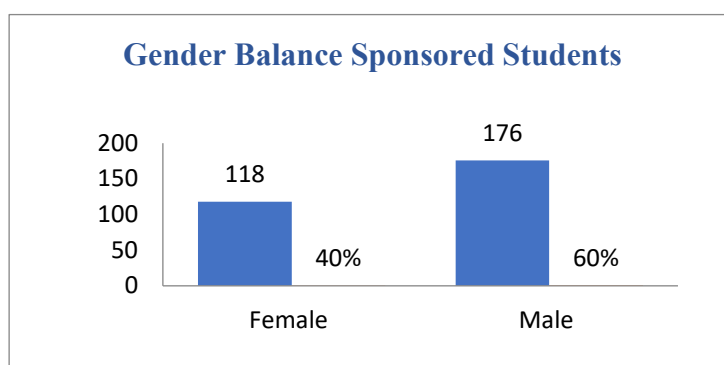
Among the 294 students, 50 students attended mainstream boarding schools, 43 attended special boarding schools, while some 8 special needs students along with the other 193 attended mainstream schools/institutions.



*A graph showing number of students in relations to level of Education.*



The gap is being bridged between male and female students. We hope that this trend continues.



*There were 118 Female students and 176 Male students overall as shown in the graph above.*

### Special Needs Students

The selection process for this sponsorship program is prioritized and selected based on status such as orphaned, single parent /guardians, living with disabilities, all from very poor families. The interviews were conducted in January and February 2016.

Through our partners, MPC provided educational financing and integrated the special need students to the appropriate educational institution for better learning opportunities. The lack of curriculum flexibility, affordability, risk of bullying and inadequate attention from teachers who may not have the specialist training to teach children with disabilities, are some of the contributing factors that hinder integration to normal schools.

Special Needs Students Educational Level	Females	Males
Primary	16	19
Secondary	1	4
Tertiary	0	1
College	6	4
<b>Total</b>	<b>23</b>	<b>28</b>

*The table above shows the number of students in various levels of Education.*

The Sponsorship Program Team has a series of interviews with students during the holiday breaks being April, August and December 2016. From these interviews, students share the issues facing them be it their performance at school or challenges at home. The interactions with the students has yielded much fruit and decreased the number of dropouts in schools with most students improving in their studies.

As education is key to helping the poor families raise their living standards, the program has helped students to be educated to their highest level and most are able to access job opportunities in the society. This is evident when we receive letters of appreciation and the considerable number of Alumni visiting us, in addition to the increased number of students being admitted to the various universities in Kenya.



*Mr Jared Oundo a former MPC Beneficiary lecturing students.*

Many students from the slums face extra difficulties at school. Most parents or guardians cannot afford the many school items such as books, uniforms or even a school-bag. There are always additional charges raised during the year by schools to compensate for inadequate government funding whereby it is impossible for a person from the slums to pay.

Our hope for 2017 is to provide further services to the students to help them manage the extra challenges they face. We desire to increase the number of students we can sponsor to day schools, boarding, special needs and vocational training. Education is one part of the picture, we would like to develop out of school activities for children to be children such as sporting, cultural events and fun events to provide life time memories. We do not want to forget about the parents / guardians' sensitizing sessions, to assist them to be more involved in their child's education and offer topics of wide interest to help with the empowerment process.

**Jane Akumu**

*Donor Relations Officer*





## Mary Immaculate Clinic

Our Clinic is a registered medical centre under the Ministry of Health that includes a laboratory, pharmacy, VCT screening, home based health care, clinicians and doctors who treat over 130 patients a day with the opening hours from 8.00am until 5.00pm Monday to Friday. Each day has a special focus:

**Monday:** General

**Tuesday:** Child Welfare Vaccinations

**Wednesday:** ANC Antenatal

**Thursday:** HTN / HDM – Hypertension and Diabetes

**Friday:** General and Child Welfare.

One major acquisition this year was the TB (tuberculosis) room. As a contagious disease, the new room enables the patients who suffer from the disease, to be treated with privacy and reduce the risk of possible infection to other patients.

The laboratory tests that the clinic can do vary from the very simple to more complex investigations. This year we included more tests to ensure that patients received quality treatment. A haemoglobin machine was repaired and a glucometer was purchased to reduce the turnaround time for patients results.

### 2016 Clinical Statistics

Categories	Under 5	6 - 17	18 - 35	Over 36	Total
Consultations	4,793	1,628	1,783	1,052	9,256
Laboratory Tests	830	1,421	3,544	1,292	7,087
Prescriptions	2,050	1,517	1,613	998	6,178
Waivers	11	1,380	355	52	1,798
Vaccinations	1,135	N/A	N/A	N/A	1,135

Our consultations and examinations are carried out by the clinical section which consists of 2 clinical officers, 1 nurse and 2 volunteer doctors. One medical doctor, a part-time gynaecologist, Dr Nina Rangel, has a special focus on cervical screening which has been supported by the Australian High Commission's Direct Aid Program. The aim of the project is preventative so that screening and diagnosing early will reduce the number of women with cervical cancer. During 2016 over 200 women have been screened.

We are fortunate to have Dr Karen Schneider, Sister of Mercy from USA, who brings her medical team to the Clinic to perform simple hernia operations of children from the Slums. The team performed over 40 operations and attended to dozens of children in January.





Slovak Aid sponsors the other medical doctor, Dr Veronica, on a full-time basis. We are also grateful to the Mater Misericordiae Hospital who provides medical doctors on a rotational basis each Thursday for a few hours.

The Victoria Bank Charitable Trust have been financially supporting the Clinic since July 2016. The funding assisted in the purchase of medical equipment, pharmaceutical drugs and salary contributions. We are very appreciative of Dr Sheth and Mr Neil McDougall who introduced us to the Victoria Bank Charitable Trust.

Another important dimension to the Clinic is the Home-Based Care program. This program serves the health needs of people living in the slums who are unable to make the journey to the Clinic. It is staffed by 2 home based nurses with the assistance of dozens of volunteer community health workers who receive a nominal fee. At the beginning of the year there were 11 outstations in the program but unfortunately outside factors beyond our control caused the decision to reduce the number. With over 20 villages in Mukuru Slum, the Home-Based Care program spreads across the huge area to maximise the outreach as much as possible. The more complicated cases are referred to hospitals in the greater Nairobi region.

<b>Mukuru Slum Villages</b>	<b>Number of Patients treated</b>
1. Kayaaba	35 to 57
2. Commercial	18 to 25
3. Unibuilt	48 to 84
4. St Ives	48 to 60
5. Hazina	10 to 30
6. Kingston	48 to 70
7. Crescent	22 to 30
8. Paradise	20 to 30
9. Lunga Lunga	50 to 80

*The table above indicates the monthly range of patients depending on seasonal factors*

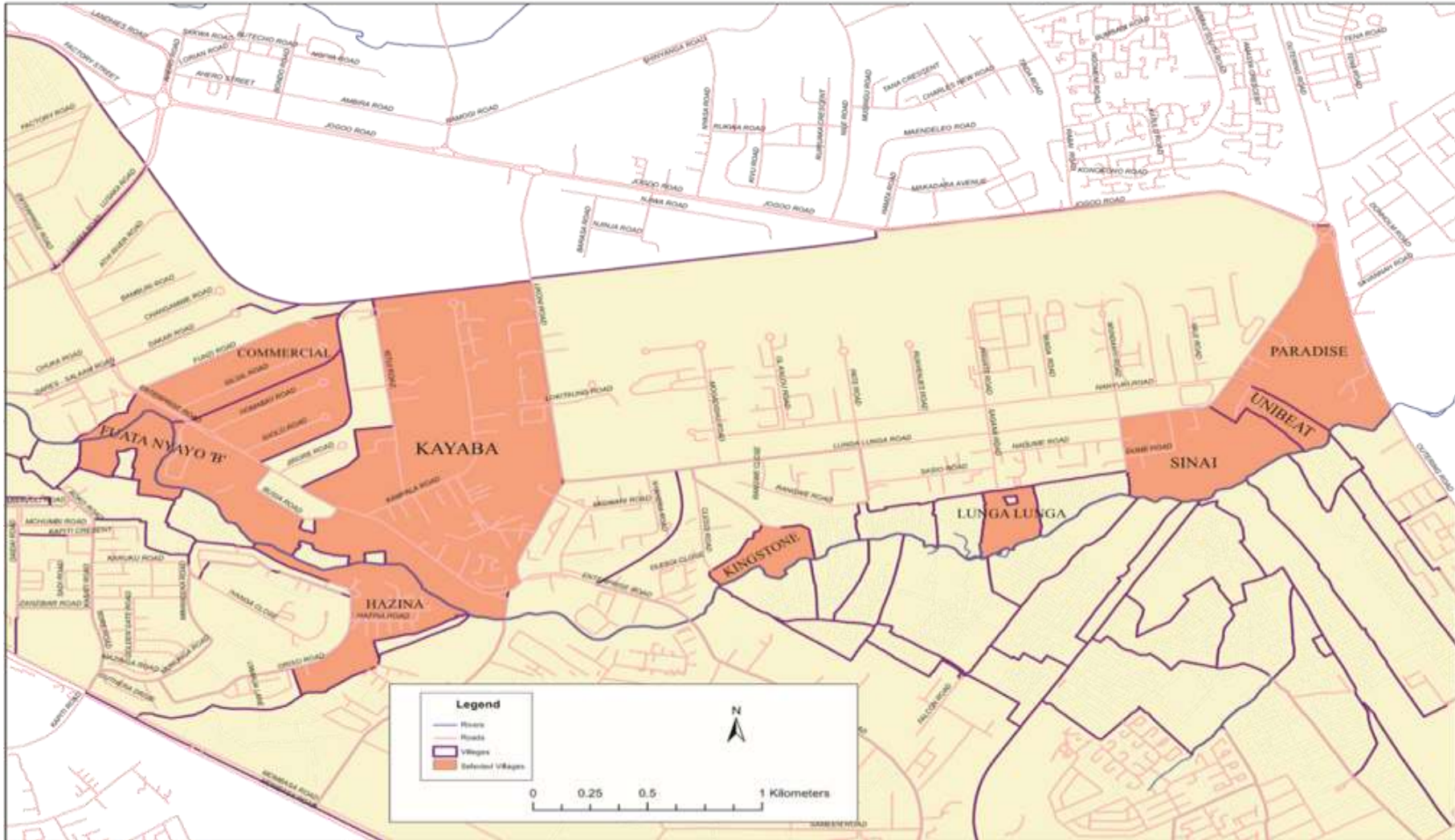
Preventative measures are necessary to reduce the prevalence of diseases and to reduce our operational costs. One such measure sponsored by Misesa Cara is the community clean-ups. Several clean-ups took place during the year which encompassed Nairobi River, Kayaaba and Fuata Nyayo. Improved sanitation and rubbish collection does make a difference to peoples' health. We continue to raise awareness through the clean-ups.

As the quality of our services improves so does our patient numbers as more people experience the professionalism as well as care, with their treatments. We managed to achieve many of our targeted goals thanks to the full support of management and staff.

**Frida Kananu**

*Head of Department*

**MUKURU SLUM**



*Outstations are highlighted in dark orange.*

## Mary Immaculate Rehabilitation Centre

Mary Immaculate Rehabilitation (MIRC) is a registered centre with the Ministry of Labour, Social Security and Services (CS No. 000075) and is part of the larger umbrella organization, Mukuru Promotion Centre for the last 20 years. MIRC combines formal and informal learning for street boys within a 12-month residential program that can accommodate up to 65 boys between the ages of 8 to 17.

The program focuses on learning either primary school subjects or a vocational skill training in line with the age group and background of each boy. Lessons or training occupy the boys until mid-afternoon when sports and other co-curricular activities as well as regular counselling sessions take place. To deliver this integrated approach to addressing the specific challenges presented by this target group, teachers and skills instructors work alongside social workers, counsellors and house parents. While the risk of the boys dropping out always remains a strong possibility during the year long program, recent years have recorded an average of 60 boys finishing the program and either securing employment or continuing in education sometimes through MPC sponsorship.

The Rehabilitation Centre continues to be a positive environment for boys to remain off the streets and focus on their potential. The stages of the program include: recruitment, home searches, home visits, counselling, education, reintegration and placements. The boys are usually recruited from our catchment area which includes South B, South C, Nairobi West and Mukuru slums, Airport West, Fuata Nyayo, Shimo La Tewa, Kayaaba, Lunga-Lunga, Reuben, Donholm, Sinai, Mlango Kubwa and Mukuru Kwa Njenga slums. The program helps the boys to reach a point where they feel comfortable about returning to their families, or taking charge of their life in a positive way to become responsible and self-sustaining through vocational training.

The work of the Rehabilitation Centre involves partnerships. Some of the organisations that we work closely with are: Hope Worldwide Kenya, HAART, Medecins Sans Frontieres (MSF), Mater Comprehensive Care, Mary Immaculate Clinic, Mwangaza New Life Centre, Kwetu Home, DCO – Starehe Ward and the Charitable Children Institutions to name a few, each organisation providing some assistance in their own area of expertise.

The reintegration process went well with the 2015 group. This major activity commences at the beginning of the year where 27 boys who completed the program were integrated back into their homes and enrolled in various schools depending on accessibility and financial capability of the family. Those boys who do not have any place to be considered as their home remained at the centre and enrolled in schools through the sponsorship programs. On occasions, we have a few boys who need specialist help with their drug addiction. In 2016, we had 5 boys who were referred to Mwangaza New Life Centre for further rehabilitation. All the carpentry boys were placed in different companies where they earned some income to help them pay for basic needs and rent.

The recruitment for new boys took place most of February as the catchment area we covered is large. The initial steps require a lot of trust by the boys with our staff and some boys like to ‘come and see’ and then leave but come back again. The settling-in period can go for a couple



of weeks for a variety of reasons but once the boys are committed to change, progress happens at a comfortable rate.

The boys are placed in various classes based on what level of education they had completed before living on the streets. There were 22 boys placed in the carpentry and joinery class; 19 of them completed their courses. The informal learning classes are divided into two. Year 1 class had 14 boys and Year 2 had 15 boys. The boys cover such subjects as Mathematics, English, Kiswahili, Life Skills, Social Studies, Physical Education and Christian Religious Education.



Part of the overall program involves the health and wellbeing of the boys. All the boys received a medical check-up by the Clinic staff, and any referrals for VCT / HIV counselling are made. The home tracing and visits are very important to conduct throughout the year. The Centre needs to establish the backgrounds of the boys to ascertain if reintegration is a possibility for later. During the year, staff connected with 44 boys' families. This step enabled the other steps to be achieved at the end of the program.



*Two of the boys connected with their mother and siblings.*



*Parents Day*

Towards the end of the program parents are invited to the Centre for a Parents' Day. This gives a good opportunity for the parents to see first-hand how the Centre has been assisting their boys to reform and stay off the streets.

The holistic element of the program involves spiritual, cultural and sporting developments. Over 35 boys attended regular catechism classes while another 28 attended pastoral classes. A favourite activity for the boys at the Centre is participating in the scouts' movement. In 2016, the boys competed in a few local, county and national level scouts' competitions and won. The scouts training and discipline is a bonus for the boys and we are grateful to Waves Trust who have been sponsoring the program for 20 years.



In December, at the end of each program there is a graduation day. This is truly a day for celebration! In 2016, 48 boys received their certificates that testified to their exemplary commitment towards their own rehabilitation. The boys provided their own entertainment as they sang, dramatized and danced the day away.



At the beginning of each year we know there will be challenges as we try to help the boys to reform. Many find the initial period the most difficult. However, after a few short months the transformation is evident. The boys start to see that enduring the difficulties are worth it. It doesn't mean that they won't face more challenges when they leave, it does mean that they have received belief in themselves to manage better. The positive relationships that were cultivated during the year between the key players reduces the risks of returning to the streets. Previous year groups do return to the Centre to provide guidance and witness to the fact that their lives can change for the better.

**Jacques Mahamba**  
*Head of Department*



## Financial Accounts Mukuru Promotion Centre

### STATEMENT OF COMPREHENSIVE INCOME - YEAR ENDED 31 DECEMBER, 2016

		2016	2015
	Note	KES	KES
<b>INCOME</b>	<b>3</b>		
Grants, Contributions & Donations	(a)	44,353,609	64,424,654
Other Income	(b)	15,396,723	15,074,154
<b>Total Income</b>		<b>59,750,332</b>	<b>79,498,808</b>
<b>Expenditure</b>	<b>4</b>		
Personnel Costs	(a)	40,368,776	39,746,321
Operating Costs	(b)	27,928,798	24,422,741
Finance Costs	(c)	618,950	1,419,790
		<b>68,916,524</b>	<b>65,588,852</b>
<b>Balance before Capital Expenditure</b>		<b>(9,166,192)</b>	<b>13,909,956</b>
Capital Expenditure		1,731,100	8,751,441
<b>(Deficit) / Surplus Balance for the year</b>		<b>(10,897,292)</b>	<b>5,158,515</b>



## STATEMENT OF FINANCIAL POSITION - 31 DECEMBER, 2016

		2016	2015
PROPERTY AND EQUIPMENT	Note	KES	KES
Property and Equipment	5	1,191,371,806	69,203,014
		<u>1,191,371,806</u>	<u>69,203,014</u>
<b>CURRENT ASSETS</b>			
Receivables	6	1,822,340	2,484,233
Trust Investments	7	13,448,391	13,448,391
Other Investments	8	15,432,170	14,467,250
Cash and Cash Equivalents	9	6,313,121	9,070,633
<b>Total Current Assets</b>		<u>37,016,022</u>	<u>39,470,507</u>
<b>CURRENT LIABILITIES</b>			
Payables	10	9,894,112	1,929,597
Provision for Employee Benefits	11	5,035,526	4,558,234
<b>Total Current Liabilities</b>		<u>14,929,638</u>	<u>6,487,831</u>
<b>Net Current Assets</b>		<u>22,086,384</u>	<u>32,982,676</u>
<b>Net Assets</b>		<u>1,213,458,191</u>	<u>102,185,690</u>
<b>REPRESENTED BY:</b>			
Assets Fund		1,191,371,806	69,203,014
Restricted Funds		12,922,736	19,399,523
General Reserve Fund		-4,284,743	134,762
Trust Fund		13,448,391	13,448,391
<b>Total Funds</b>		<u>1,213,458,191</u>	<u>102,185,690</u>



## Donors Year Ended 31<sup>st</sup> December 2016

	<b>2016</b>	<b>2015</b>
	<b>KES</b>	<b>KES</b>
<b>(a) Grants and Contributions</b>		
DKA Austria	6,251,767	4,153,347
Missionaries of Africa - Germany	3,650,000	2,492,503
Sr Assumpta Walsh & Friends	3,466,865	1,246,545
Child Fund Kenya	3,158,574	3,694,868
RTS Family Foundation	3,037,500	0
eRko Slovakia	1,280,142	1,899,495
Edgely Trust	1,152,000	1,152,000
Brothers & Sisters in Need	1,127,564	551,372
R Paterson & Friends	1,103,720	1,456,486
Waves Trust	810,428	817,037
Kindermissionswerk	767,006	1,221,473
Donations - in kind	682,915	341,155
Medicines for Humanity	609,600	1,765,039
Cheshire Disability Society of Kenya	534,202	800,000
Misean Cara	496,610	10,958,970
Trocaire	282,952	401,473
Africa Direct	25,000	2,034,026
Kenya Irish Society	0	80,000
Mandurah Catholic College, Western Australia	0	1,190,000
Mercy Solidarity Ireland	0	3,532,484
Missionaries of Africa - Canada	0	950,000
Sancta Maria College	0	1,532,998
St. Michael's Lurgan Northern Ireland	0	8,837,518
Other Donors	14,896,021	11,443,318
Other Grouped Donors	1,020,744	1,872,547
<b>Total Grants and Contributions</b>	<b>44,353,610</b>	<b>64,424,654</b>





	<b>2016</b>	<b>2015</b>
	<b>KES</b>	<b>KES</b>
<b>(b) Other Donations</b>		
Collette Foulkes	1,662,011	364,000
Sr Mary Killeen & Friends	1,581,421	1,806,093
Stella and Pedro Urieta	1,320,000	0
Irish Guards (Gardai)	1,108,000	0
Sisters of Mercy, Kenya Province	1,000,000	0
Mr Shar -Topin Industries	969,845	354,888
Frank & Paula Cullen & Calary Parish Church	678,765	1,049,606
Nakupenda Africa	656,600	0
Eileen Roberts & Carmel	561,805	0
Mr Mansukhlal K Shar	550,000	300,000
Airtel Networks	549,000	559,638
Sr Angela Hartigan & Friends	485,640	433,916
Sr Sally Mounsey & Friends	426,590	270,526
Victoria Charitable Trust	400,000	0
Friends of Mukuru, Western Australia	330,530	210,196
Ann Coburn & Rowena Daly	255,537	0
Kevin Robert & Family	237,815	0
Peter & Ger Sreenan	227,772	0
Sr Ann Doherty	220,881	0
Edward Coyle	178,901	0
Mater Dei College, Western Australia	175,000	100,000
DKA Support Office	172,485	0
St Martin's Church	155,460	236,588
Co-operative Bank	150,000	0
Innsco Kenya Limited	149,851	192,000
Barbara Elizabeth Lyster	146,000	0
Mr Juan Cervign & Mrs Maria Jose Larrea	119,900	0
John & Mary Healy	131,513	
Ann Nderi	110,000	0
Crown Paints K Ltd	101,000	0
Peter Crayford	73,700	103,900
Australian High Commission	10,000	678,778
Brendan Graham	0	198,000
Clodagh Maguire	0	1,003,830
Cora Allen - St Fiachra Primary School	0	136,533
David O'Keeffe	0	205,000
Dr Agnes Chege	0	200,000
Gajree & Friends	0	105,000
Holy Name Parish, England	0	330,143
James Healy & Associates	0	415,515
John McGinley	0	232,302



Raja Foundation	0	204,450
Rotary Club Nairobi Industrial Area	0	104,980
St Joseph's Secondary School, Tula	0	454,360
St Vincent de Paul Arklow	0	319,076
Teresa & Owain Jones	0	874,000
<b>Total Other Donations</b>	<b>14,896,021</b>	<b>11,443,318</b>

**(c) Other Grouped Donors**

Mrs Thathi Satwant Kaur	90,000
Bob Dewar Publicity	60,000
Leisa, Brian & Christine Gibson	60,000
South Central Justice Office	56,500
Kiesan Hickey	56,181
Majella Curtain	56,181
JM Mburu Architects	50,000
Helen M Daly	49,882
Horizont 3000	44,395
Margaret Reid	43,800
Margaret Kamuyu Maina	42,000
Ian Berry	37,750
Maria Gonzalez Guardiola	36,836
Sr Andrea D'Souza	34,483
OLSG Enfield Third World	31,143
Cindy Oraro	30,000
Elizabeth MG & Hellen Spyropoulos	30,000
Scott Sygrove	27,397
Sr Elizabeth Devine	22,500
Nora May Hickey	22,472
Ling Wang	17,000
Society of African Missions Students	15,500
Sr Balijeet Sokhi	15,000
E R Weatherhead	12,600
Gail Cote	12,375
Diamond Trust Bank Lenten Group	10,000
Friends of Achne Raja	10,000
Sam, Declan & Eddy Ireland	10,000
Management, University Of Africa	9,190
Ana Carvajal	7,660
St. Pauls Central Jumuiya	7,500
Michael Musau	6,800
Kuoni Architects	5,600

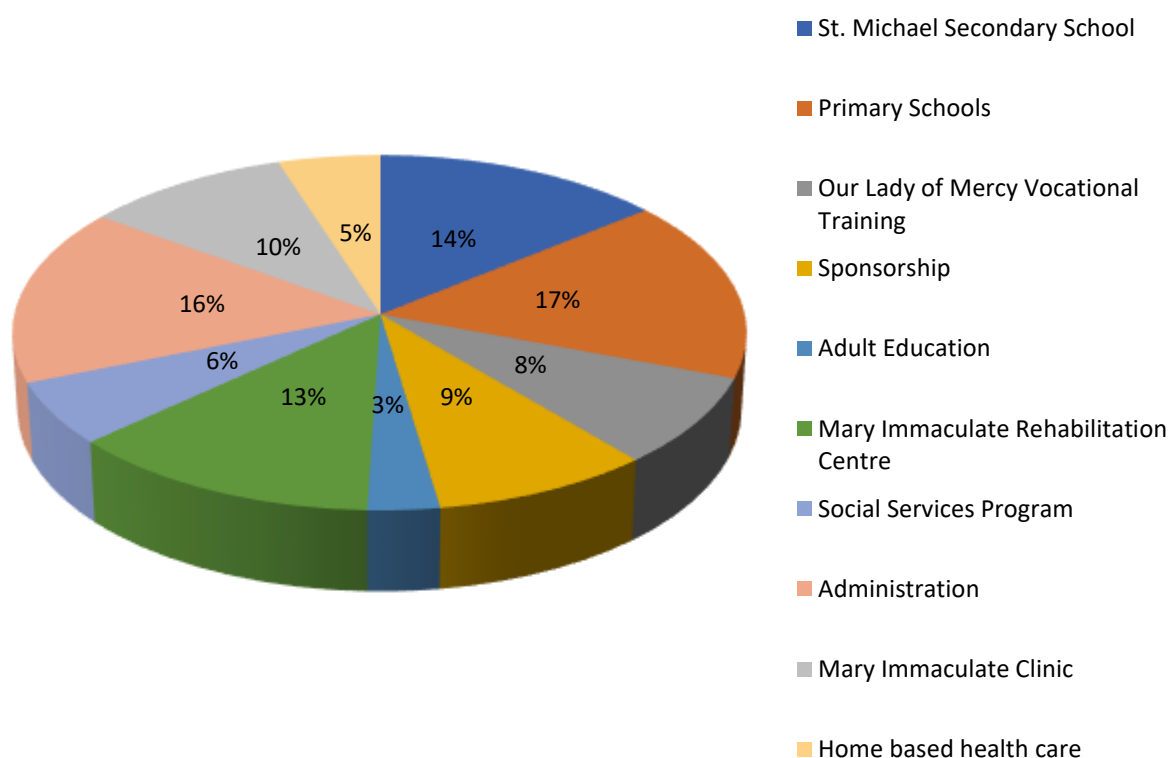
<b>Total Other Grouped Donors</b>	<b>1,020,744</b>
-----------------------------------	------------------



## MPC Operating Expenditures 2016

Department	Amount Kes	Total Kes
St Michael Secondary School	9,980,730	
Primary Schools (Four)	11,719,588	
Our Lady of Mercy Vocational Training Centre	4,945,778	
Sponsorship Program	6,220,311	
Adult Education Program	2,032,490	34,898,896
Mary Immaculate Rehabilitation Centre		8,871,504
Social Services Program		4,024,288
Administration Head Office		10,870,294
Mary Immaculate Clinic	6,816,821	
Home Based Health Care	3,434,718	10,251,539
<b>Total</b>		<b>68,916,521</b>

## MPC Operational Expenditure 2016





## Support our Empowerment

Donate on-line: [www.mercymukuru.co.ke](http://www.mercymukuru.co.ke)

Below are details of what your donation can provide:

### 5 Euro

- Provide vaccinations for Children
- Drawing materials
- School Socks

### 10 Euro

- Primary School Uniform
- School Bag
- School Shoes
- School Jumper
- Scientific Calculator

### 20 Euro

- Complete School Uniform (uniform, bag, shoes and jumper)
- Provide food for a primary child for a week
- Stationery items for school
- Soccer (football) ball

### 30 Euro

- Eye glasses
- Community Health Volunteers Allowance for a month.
- 13kg Gas bottle – provide 3 months cooking for family
- Purchase 2 ring Gas cooker

### 50 Euro

- Primary school “extra fees” for firewood for a year
- Provide rent for two months in a shanty

### 60 Euro

- Provide a family of 4 with food for a month

### 80 Euro

- Exam fees for secondary school
- Hospital treatment for a child - general

### 100 Euro

- Provide art materials for a term
- Provide training for Community Health Workers

### 125 Euro

- Exam fees for Vocational Training courses
- Vocational Training Courses: hairdressing, plumbing, carpentry, computer packages and hospitality.

### 150 Euro

Provide educational textbooks for the year

- Paediatric hernia operations

### 200 Euro

Provide shelter for a “trafficked” child for 1 month (shelter, counselling, food and education).

- Provide day secondary education for a year

### 500 Euro

- Provide boarding secondary education for a year

### 600 Euro

Child Rights Lawyer per month