



Mukuru Promotion Centre
Empowerment Step By Step
Sponsored by Sisters of Mercy
www.mercymukuru.co.ke

Newsletter

April 2021
Vol 6, Issue No.4

Feature This Month:


KCPETop 20 Achievers	4
April Interventions	10
Teenage Mums	12
The Kenyan Child Foundation New Facility	16
Sponsorship Students Results	25



The New Facility at Songa Mbele na Masomo continues to take shape

Dear Partners, Supporters and Friends,

We wait with mounting excitement and expectation for the opening of the new educational facility at Songa Mbele na Masomo. The families of children living with disabilities are among those most in need. There is much stigma associated in certain sections of society here with less than perfect children. Some people believe parents who have such children are 'bewitched', so parents are tempted to hide the children in order to avoid stigma. Some husbands leave their wives, while other wives leave their husbands believing the partner to be cursed. Thus, many children with disabilities are reared by single parent families which increases their poverty. It is common to hear children shout insults at those with disabled children and to tease and annoy the children living with disabilities. It is not easy for us to have an inclusive vocational centre where youth of all abilities can attend and develop their skills. It has taken years to improve awareness and acceptance of inclusion and we still have a long way to go.



Thank you for your support for the inclusion and education of those with disabilities and for the great improvement in facilities under construction.

It's wonderful to see so many Mukuru children complete primary education and hopefully get an opportunity to continue to secondary or vocational training. I remember a time in the eighties when 80% of Mukuru children could not access primary school. Through your help, over ten thousand children are continuously in school, in schools founded by Mukuru Promotion Centre, four of which we still sponsor (*St Bakhita, St Catherine, Sancta Maria and St Elizabeth*). We and the parents' committees have to be constantly vigilant to block corrupt officials who would try to enrich themselves and block poor children accessing primary school, with all sorts of demand for payments, especially for extra tuition. It is not easy to support teachers and support staff for the schools. We are very appreciative of the fact that we have managed so far.

It has been extremely hard to fund child protection services and social work services. You read in the Newsletter the various activities carried out each month. Young teenage mothers and babies and those who lost jobs may not have survived within Mukuru slums without the support of medical and social services.

A past pupil of the Rehabilitation Centre, Onesmus, was temporarily working with us, during lockdown as a houseparent. He is currently in university studying agriculture. To see him now and the journey he has travelled since he was admitted from the streets is very moving. He is an inspiration for the present boys. Well done to all those who have enabled his transformation. Congratulations to all of you who have contributed to the success of the boys who sat for the primary examination. They will proceed to secondary hopefully if enough sponsors are there to help.

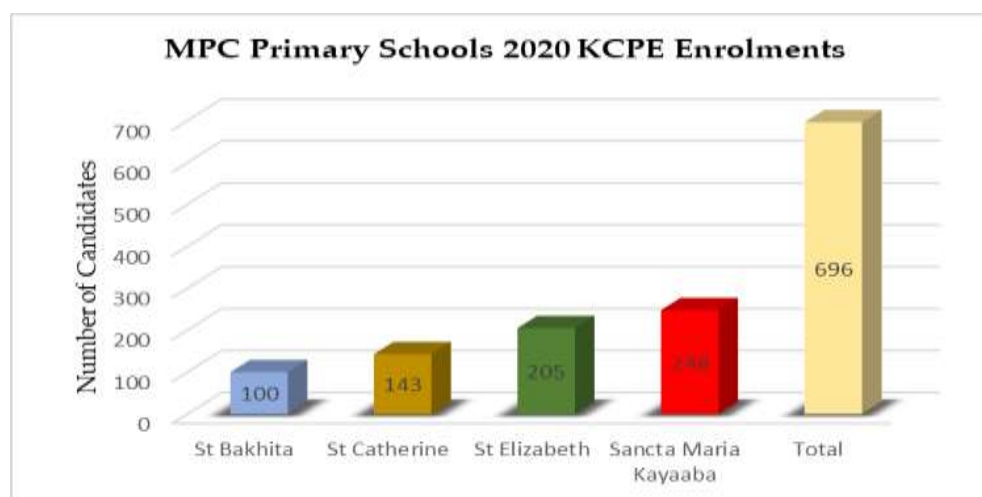
We are incredibly grateful for the improvement of support for girls' secondary education. We look forward to seeing emerging women leaders from our surroundings.

May God bless and protect you and fill you with blessings.

Sr Mary Killeen
Director

Education

The Kenya Certificate of Primary Education (K.C.P.E) is a certificate awarded to students after completing the approved eight year course in primary education in Kenya. The examination is supervised by the Kenya National Examination Council (K.N.E.C). The examination is taken in three days and is preceded by a day of rehearsals. The three day examination examines learners on key subjects such as Mathematics, English Language, English composition, Science, Kiswahili Lugha, Kiswahili Insha, Social Studies and Religious Studies. The examinations took place from 22/03/2021- 24/03/2021. This examination that will see them transition from Primary School to Secondary School level.



The MPC Primary schools had a total number of 710 enrolled candidates. However, 14 students did not take the examinations hence those who took the examinations were 696 in total.

KCPE 2020 Subject Performance in MPC Schools							
Primary School	Subject Mean Scores						
	English	Kiswahili	Maths	Science	SSRE	Mean Score 2020	Mean Score 2019
St. Catherine's	53.81	49.36	53.05	50.51	53.63	260.66	253.09
St. Bakhita	50.18	47.79	50.88	50.28	49.68	248.81	236.35
St. Elizabeth	52.59	48.56	46.16	46.99	50.14	244.44	231.58
Sancta Maria Kayaaba	49.71	44.94	46.24	43.01	45.89	229.81	236.43
School Average	51.57	47.66	49.08	47.70	49.83	245.93	239.36

From the above statistics it can be deduced that three schools namely St. Catherine's Primary School, St. Bakhita Primary School and St. Elizabeth Primary school mean scores have progressed from 2019 mean scores. Notably Mukuru Primary school's performance has not progressed rather the mean score has depreciated.

Top 20 Achievers in MPC Primary Schools			
Name	Gender	KCPE Score	School
Soita Elizabeth Wamboi	F	394	St Elizabeth
Irine Agola Odhiambo	F	386	St Catherine
Kiplang'at Desmond	M	386	St Elizabeth
Joshua Silvia Nyarinda	F	383	Sancta Maria
Oirere Kennedy Onyango	M	381	St Bakhita
Ademba Clare Atieno	F	379	Sancta Maria
Ombati James Aburi	M	378	St Bakhita
Musembi Ruth Ndanu	F	377	Sancta Maria
Joy Gideon Makau	M	374	Sancta Maria
Otieno Nereah Aida	F	374	St Bakhita
Obambo Reagan Onyango	M	370	St Elizabeth
Simiyu Jacob Masika	M	370	St Elizabeth
Otieno Edgar	M	369	St Bakhita
Elisha Ochieng Owino	M	367	St Catherine
Odhiambo Joseph Were	M	367	St Bakhtia
Mang'ula Mary Matendechele	F	365	St Elizabeth
Paul Nyamogara	M	364	St Catherine
Osteno Marion Adlight	F	363	Sancta Maria
Naomi Sintamei Joseph	F	361	St Catherine
Purity Wanza Mongela	F	361	St Catherine

From the above table it has been illustrated that both girls and boys have been represented equally. This has demonstrated a positive direction for the girls as they have extra issues to contend with in their education journey. Despite the disruption of learning due to CoVid19, the Kenya Certificate of Primary Education (K.C.P.E) reflects students and teachers' efforts. This has been illustrated from the improvement in performance of 2020 as compared to year 2019.

St Michael's Secondary School

April was an examination month. The Kenya Certificate of Secondary Education (KCSE) national examinations took place without any significant disruptions from the CoVid19 pandemic. All students received masks as per the Ministry of Education instructions. All the 101 candidates attended the exams. Only the candidates were to be allowed in the exam room. To ensure that all went according to plan St Michael's were assigned two security officers to man the examinations, six invigilators and one supervisor. The candidates were spread across six examination rooms which made a difference in managing to number of students and CoVid19 protocols.

The examinations concluded on the 19th and the candidates left for their homes with their hopes high that they will do well in the exams. Prior to each examination our teachers came in the late afternoon to provide last minute revision with the candidates. At the beginning of the examinations, the candidates were tense for the first two to three days, but they gained confidence as the examinations progressed. One of the pregnant teenagers successfully completed her exams which was a worry for us that she would deliver during the exam period. After the examination period, MPC invited all the candidates to do some computer classes at the Vocational Training Centre and 75% took advantage of the classes. Well done to them!

While the rest of the school was on the holiday break, the regular school meetings continued during the month with parents, teachers and staff. Next month the results will be available. We hope that more students can achieve entrance into university than in 2019.



Students line up to receive their masks each morning prior to the exam

We are excited about the education partnership with the Fidel Goetz Foundation. The objective is to provide greater access to education for girls. A representative from the Fidel Goetz Foundation talked to the girls about the program. All the female students in Form 3 were encouraged to submit an application.

St Michael's Secondary School has partnered with Strathmore University's Macheo Program since 2016 to help students with academic ability to reach their potential. The students who participated in the program managed to achieve C+, B-, B+ and A-. We are happy to share the former students, who participated in the program are currently completing various courses at different universities in Kenya. Their studies range from Business Administration, Biochemistry, Computer Science (3) to Community Development. The social workers caught up with them during a Macheo gathering and the common struggle for them was not their ability but the financial status of their families to pay for the fees.

Macheo 2020 students who completed their KCSE examinations are currently studying computer packages at Our Lady of Mercy Vocational Training Centre. St Michael's current Form 2 and Form 3 students will comprise the Macheo 2021 program that will resume when Strathmore University re-opens in June.



St. Michael's Form 4 students after a mentorship session

Our Lady of Mercy Vocational Training Centre

Kenya once again suspended face to face learning in April in all educational institutions as the third CoVid19 wave began to gain momentum in the country at the beginning of March 2021. This directive affected tertiary and vocational colleges. Many tertiary institutions have returned to online teaching and learning. Face to face learning for vocational courses is difficult to do online due to the level of practical work. The vocational Centre tried to conduct online learning with the Front Office students however, it did not succeed as most students do not have laptops or money to buy internet bundles to sustain a two-hour online class. Learning programs have been disrupted severely, resulting in a high number of dropouts and new enrolments.

Industrial Attachment provides students the opportunity to meet and network with people in the various industries. The attachment provides the opportunity to identify talent and potentially skilled workers and helps the students to receive a hands-on experience. After suspension of learning in March this year, 13 catering students requested to be allowed to start their attachment as they waited for their national examinations. Other students attended the Centre to help the teacher and gain extra experience.

The exams for vocational training courses have been rescheduled twice and we expect NITA, the examination body, to communicate the starting date anytime from now. With hotels shut or operating at reduced capacity, it has been extremely hard to access attachments in the hospitality industry. It has been very frustrating for the vocational students as their courses were completed in 2020 but have been waiting patiently for the examinations. Before the students can receive their certificates they must complete the examinations.



Some of the 2020 Catering students with their teacher

The biggest challenge facing vocational centres is enrolments of new students. To stay afloat, the pandemic has forced many centres to extend deadlines, lower entry requirements and provide other flexible options. Our Lady of Mercy Vocational Training Centre is doing everything to sustain admissions. We have employed innovative ways to help increase the enrolments but the uncertainty with the Ministry causes major problems. Who provides the best advertising value our own students!

Students who visit our office go with a bunch of flyers to distribute around the community. There are over 600,000 people living in the Mukuru Informal Settlement. We have also provided the option for smaller fees installments in order to help students and families that have been financially impacted by the pandemic. Students who apply to join the Vocational Training Centre do not pay application fees since our aim is to offer financial aid to struggling parents. The Centre enrolled 71 students from St. Michaels Secondary to pursue Computer Packages as they wait the release of their KCSE results. The admission of these students was a big boost, a sign of good things to come during these difficult times of the pandemic.



New computer students work out a practical assignment.

The Vocational Training Centre resumed preparations for 2020 national exams. The Centre submitted registration details of candidates for Grade III (NITA) and Level I Kenya National Examination Council (KNEC) examinations. NITA (National Industrial Training Authority) introduced technology this year and candidates' details were filled online after verification and approval of the data. Hard copies of filled forms were also submitted to the two examination bodies.

The Front Office course registered 9 students for KNEC likewise, 38 students were registered to sit for the NITA exams. The Front Office class is doing a lot of revision in preparation for KNEC examinations. They just finished the last topic on 'Event Planning' and 'Business Transactions'. This then means that the students are able to arrange and set for conferences and other related events. The Catering students are also upbeat that the exams will be a walk over given the number of months they have taken to prepare.



Front Office class in a group discussion



Event Planning

Even though we have experienced financial challenges because of the CoVid19 pandemic fallout that has impacted our enrolment numbers, we like to celebrate our successes well. There were lots of other smaller achievements during the month. The major one apart from the examinations is the e-Waste project. With our own limitations to do something positive for the environment our e-Waste program made its first sales and other sales are imminent!



Vocational students receiving clothes from the British Airways crew member, Brenda.

Social Services

When the school holidays are on, the demand for the social services is reduced a little. However, it does provide the social workers with time to catch up on the administrative side of the services. A child abuse case can consume many days due to the different government departments that need to be visited and reports filed. Below is a summary of the interventions conducted by the Social Services Department.

Activities and Interventions for April

NO	Case type / Activities	Education						Health	Welfare		Total
		St Bakhita	Sancta Maria Kayaaba	St Elizabeth	St Catherine	St Michael's Secondary	Vocational Training Centre SKILLS	MPC Clinic	Songa Mbele na Masomo	MPC Rehabilitation Centre	
1	Abuse Cases	1	2	0	1	1	0	1	1	0	7
2	Amaranth Clients	0	0	0	77	0	0	0	0	0	77
3	Behavior and Discipline Cases	0	0	0	0	0	3	0	0	0	3
4	Counseling and Guidance sessions	0	1	0	0	8	4	5	0	0	18
5	CoVid19 Hygiene Material Resources	0	0	0	0	0	108	0	0	0	108
6	Donation Issued	0	0	0	0	2	1	0	3	0	6
7	Donation Received	0	0	0	2	34	0	0	4	12	52
8	Fire and Floods Disaster assistance	0	0	0	0	0	0	0	0	0	0
9	Food Distribution	0	0	0	0	0	0	0	39	0	39
10	Home Visits	5	10	4	0	1	2	8	28	0	58
11	Hospital Visits	0	0	0	0	1	0	2	1	0	4
12	Malnourished Babies	0	0	0	0	0	0	14	0	0	14
13	Medical Cases	0	2	2	5	3	3	0	5	15	35
14	Meetings and Trainings	0	0	0	0	2	0	0	1	0	3
15	Mentorship Sessions	0	0	0	0	0	0	0	0	1	1
16	Mobilization of Resources	0	0	0	0	0	0	0	0	0	0
17	Needy Families Support (Community)	0	1	0	16	0	0	0	7	0	24
18	Needy Primary and Secondary Students	0	1	0	0	0	1	0	0	0	2
19	Networking	0	1	0	3	3	1	5	1	2	16
20	New Admissions to MPC Institutions	0	0	0	0	0	74	0	0	1	75
21	New Teenage Pregnancies cases	2	0	0	0	1	0	0	0	0	3
22	Nutritional Support	0	0	0	88	0	0	0	0	0	88
23	Pregnancy Support Packages	3	0	0	0	0	0	0	0	0	3
24	Provision of Sanitary Towels	0	0	0	0	0	1	0	2	0	3
25	Referrals	0	2	6	8	1	6	0	5	0	28
26	Safeguarding Follow Ups	1	0	0	0	1	0	0	1	0	3
27	Sanitary Towels	0	0	0	0	0	1	0	2	0	3
28	School Absenteeism/Truancy	0	0	0	0	0	0	0	0	0	0
29	Schools Profiles	0	0	0	32	59	25	0	59	0	175
30	School Visits	0	0	0	0	0	0	0	0	0	0
31	Songa Mbele Therapy Sessions	0	0	0	0	0	0	0	27	0	27
32	Sponsorship Follow-ups	10	5	8	20	0	0	0	48	0	91
33	Uniform Aid	0	0	0	0	0	0	0	0	0	0
Totals		22	25	20	252	117	230	35	234	31	966

Sadly, this month there were 7 abuse cases reported from the community and our learning facilities that ranged from emotional, physical, sexual and negligence. We are encouraged by the number of people from the community who are coming forward with cases. The group counselling continues to be helpful for the teenage mothers. The number of counselling sessions has increased with the majority



of the sessions dealing with the financial stresses from the pandemic. Many have expressed not having enough money to buy food, water or pay school fees and the rent. With the clothes and food provisions that we received several families have benefitted since they don't have the funds to buy them. Other donations during the month included: *Avocadoes, broccoli, coriander, pumpkins, baby spinach, French beans, carrots, courgettes, onions, maize, Irish potatoes, green peas, tomatoes, bread, sukuma wiki, long life milk, wheat flour, beef, juice, biscuits, porridge, powder soap and bananas.* All the donations were distributed across the departments where there were the greatest needs. There were 39 Songa Mbele families supported with provisions.

David Mwangi was accompanied to Mbagathi Public Hospital as a victim of a hit and run accident. He had sustained a fractured tibia, fibula and eye socket. Due to a lack of beds, he was referred to St Mary's Private Mission Hospital. Sadly, he died a few hours later. The social worker at MIC clinic ensured David's body was safely taken to Nairobi City mortuary. The pathologist confirmed that his death was due to multiple injuries extensive subdural hematoma.

We have seen an increase in the number of malnourished babies which is no surprise given the poverty around as the source of casual employment evaporates in the pandemic. There were also 35 referrals from our schools to the Clinic during the month.



Songa Mbele social worker conducted a few follow-ups during the month. In 2019 the Cheshire Disability 'Economic Empowerment Program' assisted two parents with business start-up kits and three others were supported with business start-up kits in 2020. We are happy to report that the initiative is going well.



The other project being the Mushroom Project, (Zero to Hero Youth group) did their third mushroom production. The group produced 310 Mushroom bags which will be bagged, stored and incubated for the next 28 days. In April Zero to Hero Youths with Special Needs were able to harvest and sell 253 punnets. While 10 punnets did not make the quality assurance requirements, over 250 punnets did. The group managed to sell all of the punnets for 24,300.00KHS. This was a fantastic effort and provides an income for the Special Needs youth. Well done!!

Teenage Mother Program

The program is ongoing and has 40 teenagers: 9 from MPC primary schools; 1 from Skills, 2 from St. Michael's. By February, 25 girls had delivered. The follow ups continued for the remaining 15 girls who had not delivered and between February and April. Those who had delivered were issued with the Baby-care packages supported by Manos Unidas. Two girls delivered prematurely; one at 6 months and the baby is still in the incubator at Mbagathi Hospital while the other one has already been discharged. Two of the teenage mothers were also candidates who sat for their KCPE and KCSE exams.





Teenage mums.



Training is an important part of how we engage our staff for the benefit of those in the community. During the month there were several training sessions across the departments.

The Day of the African Child promotes the culture of protection, care and safeguarding in the Church and society. The sessions included: safeguarding measures and organisation to keep children and staff safe against sexual exploitation; theology of the church as the body of Christ; cultural practices as a role in child abuse; legal environment and framework for promoting protection and safeguarding; research findings on child safeguarding situation in Kenya; and the indicators and shortcomings in childrens' charitable institutions. The training was very insightful as it gave an awakening on how to embrace different challenges, to understand the global reality on child protection and safeguarding issues and what justice can be given.

Health Services

The month of April has been a month of both new initiatives and challenges at the Clinic. We have seen the resilience and commitment of the staff to provide the best quality care despite the challenges. Our patient numbers have remained steady with all services provided being accessed by the people who are most in need. We continue our commitment to provide an affordable quality service in a timely manner to the needy and sick of Mukuru.

The Clinic has continued to promote and share best practice in the assessment, evaluation and treatment of patients who attend the Clinic. One of the ways this was performed during April was through a debriefing session on the care received following trauma. This included a review of what went well and how things could be done better, including the patient journey from Registration to Referral. This was a huge learning exercise and staff were very forthcoming in sharing views and ideas for incorporating new procedures for future trauma patients.

The Clinic staff also had an in-service on the Electronic Patient Record (EPR) with a new IT Company called Micro Vision. The session was very informative and interactive, with all staff engaging and providing input with challenges they are currently experiencing and advising on features of the current system which could be enhanced.

The Clinic received a very welcome donation of equipment from The Safaricom Foundation. The donation of an ultrasound machine will assist greatly with the enhanced assessment and timely treatment of Mukuru residents attending the Clinic.

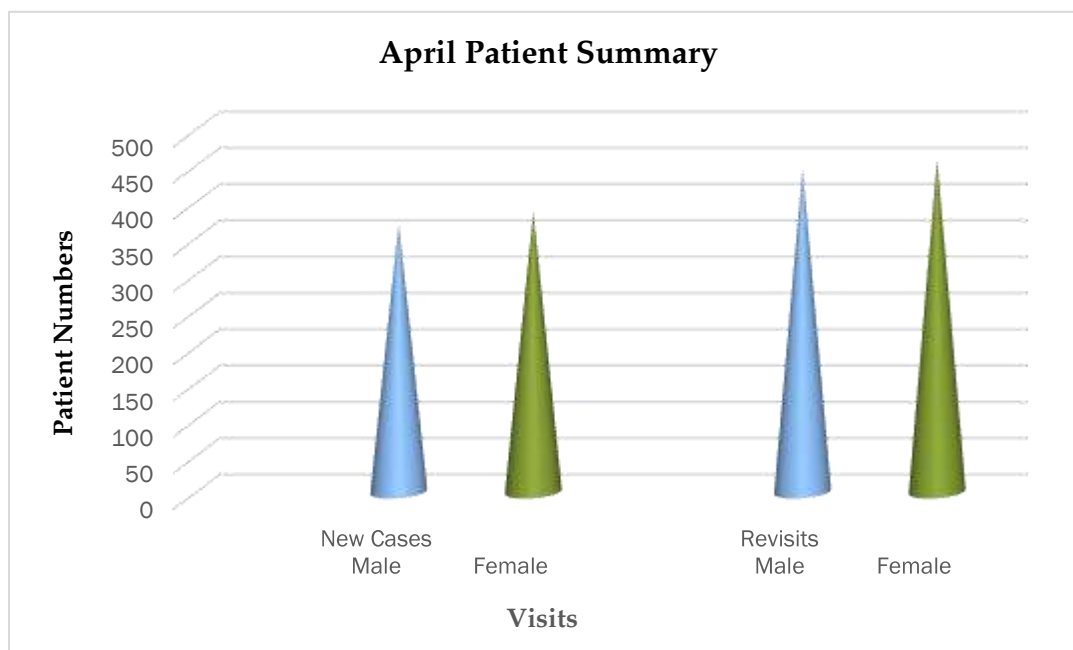
One of the Clinic's biggest challenges is the unstable power supply. The power surges cause damage to the equipments. We do have surge protectors however, sometimes the surges are so great that they destroy the protective equipment that we have. We have engaged with Kenya Power to see how we can avoid the surges.

Ignatius receives the urinalysis and microwave equipment donated by the Safaricom Foundation.



Patients Treated in April 2021

Diseases	Female	Male	No. of Cases
Acute Upper Respiratory Tract Infections	97	92	189
Acute Lower Respiratory Tract Infections	32	33	65
Urinary Tract Infections	24	59	83
Immunization	117	185	302
Gastritis	44	52	96
Febrile Illness (Unspecified)	41	24	65
Fungal Infections (Other)	19	15	34
Candidiasis	21	8	29
Diarrhoea (unspecified)	38	32	70
Helminthiasis	17	19	36
Myalgia	57	41	98
Diabetes and hypertension	51	59	110
Pregnancy	106	0	106
Tuberculosis	1	9	10
Wounds	41	64	105
Other Diseases	138	124	262
Total			1660



The Laboratory Tests For April

Tests	Total	Male	Female	<5	Under 13	>13
Urinalysis	46	16	30	0	1	45
Stool Ova / Cyst	37	15	22	5	10	22
H.Pylori	28	8	20	0	0	28
Blood Sugar	26	18	8	0	0	26
Malaria	16	10	6	9	2	5
Hemogram	36	22	14	10	2	24
HVS	11	1	10	1	0	10
Rheumatoid Factor	7	3	4	0	0	7
Pregnancy Test	6	0	6	0	0	6
ANC Profile	3	1	2	0	0	3
VDRL	3	3	0	0	0	3
Haemoglobin	2	1	1	0	0	2
Total	221	98	123	25	15	181

Average 12 tests per day



Beta Healthcare Pharmaceuticals donated items to the Clinic

Welfare Services

Songa Mbele na Masomo

The children were to return from the school holiday break in April however, with the on-going external works of the new facility, their return was delayed by a few weeks. The therapy sessions did continue throughout the month as the children were allocated different times and days and most of the parents complied with the arrangements. Apart from the therapy sessions the other activity was preparing for the opening of the new facility. The Centre received various donations: assorted vegetables, furniture, clothes and Easter hampers that were distributed to the needy families.

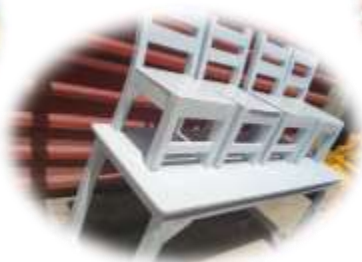
The preparations for opening included sorting out much of the furniture that had been in storage. The chairs and tables were repaired and new ones being added to cater for the number of children at the Centre. The existing special needs chairs were also repaired and repainted.



Children engaged while waiting for therapy



Therapy sessions



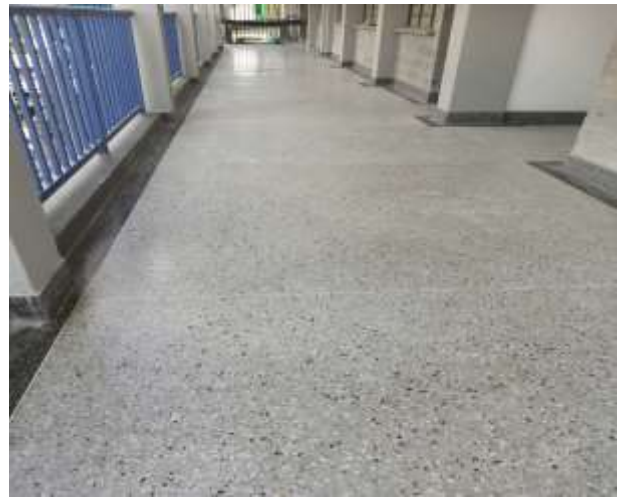
Repairs to the existing furniture

The Kenyan Child Foundation New Facility

The construction to the new facility is still going on with all the work progressing as planned. The painters are finishing off the beams, columns and the rails. The main areas to be worked on are the front entrance, drainage, askari shed and the car park area. Most of the interior rooms have been completed except for the kitchen.



Askari Hut



Corridor



One Classroom



Bathroom



One of the doors



Car park Area



Front Entrance



The Front View

MPC Rehabilitation Centre

April has been very colourful with lots of visitors and donations. There were 42 boys at the Centre during April. The 8 students who sat the KCPE exams performed very well, beyond our expectations. This could be attributed to the support given to them during the long break due to CoVid19, but we would like to think that it was due to their own motivation.

Name	School	Marks (500)
Deogracious Emoit	St Peter and Paul, Embu	372
Elisha Ochieng	St Catherine's Primary	366
John Wachira	St Peter and Paul, Embu	366
Gabriel Onyango	St Catherine's Primary	318
Erick Mutunga	St Catherine's Primary	307
Moses Maina	St Catherine's Primary	261
Emmanuel Mutua	St Catherine's Primary	257
Henry Kochwa	SSD	213

Family reintegration has always been one of our key goals and 8 boys were reintegrated with their parents during April. Two of the boys were not able to access their homes due to some Counties in lockdown. They will be reunited in May.

The 3 volunteers have been much support to the boys over the holiday period. One of them is a catechist who has been coming on Wednesday, Thursday and Friday of every week to take the boys through their spirituality and Christian values.

We had an Environmentalist who has been teaching the boys how to be more conscious of the environment they are living in. We notice the difference in the cleanliness of the compound and their own personal hygiene.



The boys receive coaching on a Wednesday and Friday each week. The female coach comes to train the boys how to play basketball. The boys enjoy the training and are always looking forward to these two days of the week.



Basketball coaching sessions

The boys experienced a wonderful Easter celebration thanks to the generosity of donors, even in the midst of the pandemic.



The national dish in Kenya is Mbuji Choma (roast goat meat). The boys are preparing to celebrate their special Easter meal together, made possible by generous donors.

The carpentry students received a token of appreciation for the renovation work at the Bio-safety Clinic.



The Centre was donated several food provisions and cooking items from Haas Petroleum.



It is that time of the year again where the preparatory work needs to be completed before the seedlings can be planted.

Sponsorship

All students had a school holiday break in April except for those preparing for the national examinations (KCPE and KCSE). Sponsored students from the universities finished their semester and had the chance to express their gratitude through writing appreciation letters to their individual donors. The holiday break provides an opportunity for the Sponsorship and Social Offices to work closely to distribute food to some sponsored students who have challenges in providing for themselves or who are without guardians/parents.



The community work usually done by sponsored students, continued on into the month of April, as the students who did not finish their community work, carried out various duties allocated to them in the various centres within MPC. Their duties included, sweeping the veranda around the school, washing the windows, collecting and disposing of rubbish.

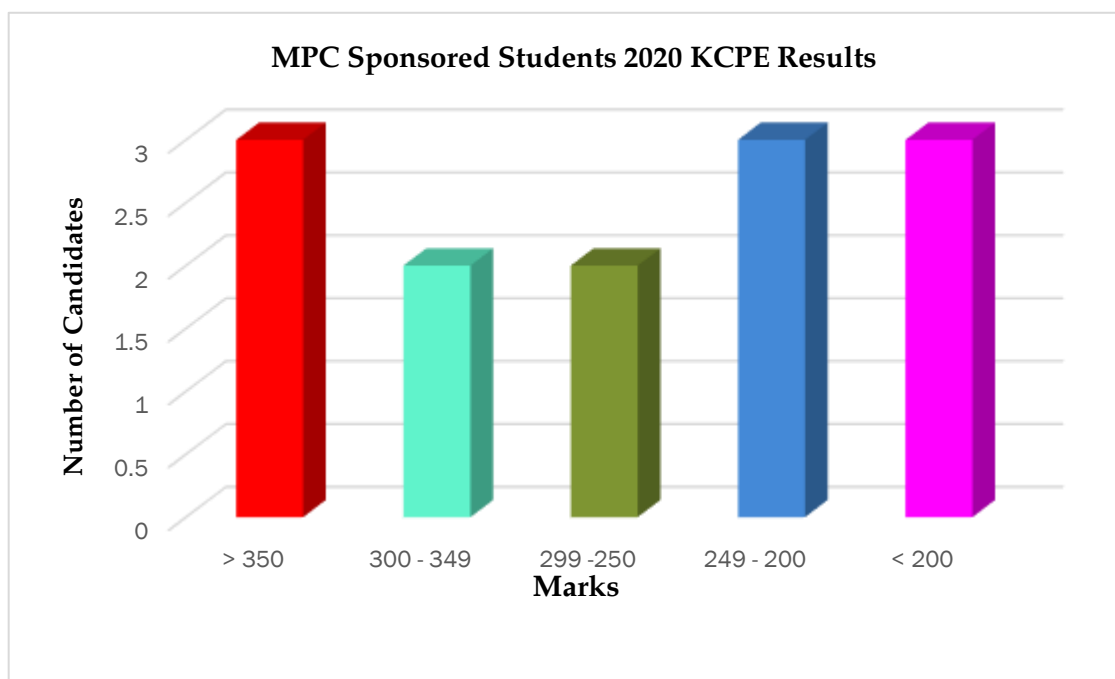
Art supplies were also donated to a needy artist, who was previously an ex-convict in order to sustain his creative work as he adjusted to life outside prison. The art supplies came from a donor, Rose Schneider who was glad to help and thus we are grateful for her continued support.



When the Form Four students finished their exams (KCSE) they were given a short orientation at Our Lady of Mercy Vocational Training Centre to familiarize themselves with the courses on offer. While they are waiting for the KCSE results it may be possible to do a short course. It was also hope for them to spread the word on the possibilities of technical training as university is not for everyone.

They were also encouraged to inform their fellow youth in the slums to join the vocational training in order to discourage idleness as they wait for their results and build on their educational development.

As mentioned previously the KCPE results were released in April and this has made the sponsorship selection for the Class 8 candidates possible for the next academic year which will start in July. Priority is given to orphaned children from the four MPC schools followed by other criteria specific to the community. Under the sponsorship program for 2020 we had a total of **14** candidates and 13 sat for the national exams. Seven of the candidates will be well placed for secondary education while the other six will be best suited for vocational training.



The term ended well, and our great appreciation goes to our donors who have supported the vulnerable children and brightened their future possibilities.

Announcements

As the MPC departments were conducting the many activities and meetings during the month there were other works keeping MPC on track.

- ✚ Preparation for the 2020 Annual Report.
- ✚ Visits from the British Airways crew members
- ✚ Various trips to the airport to collect vegetable donations.
- ✚ New Student Admissions for the Vocational Training Centre
- ✚ On-going construction for the Therapy Block
- ✚ Educational partnership with the Fidel Goetz Foundation

April was an engaging month. The future direction for many students is clearer. We hope that you have enjoyed reading about the activities. Thank you once again for your support.



Mukuru Promotion Centre

Empowerment Step by Step

Sponsored by Sisters of Mercy

Email: info@mercymukuru.co.ke

[Director: maryk@mercymukuru.co.ke](mailto:maryk@mercymukuru.co.ke)

Website: www.mercymukuru.co.ke

Tel: +254 (0) 722 505 904 Tel: +254 (0) 733 588 068